

RESOLUTION NO. 5132-13

RESOLUTION ADOPTING THE FEBRUARY 2013 UPDATE OF
THE PUBLIC WORKS CONSTRUCTION CODE

WHEREAS the Public Works Construction Code (PWCC) was adopted by resolution on October 8, 2001, and subsequently amended on February 11, 2002; October 14, 2002, March 10, 2003, March 22, 2004, October 25, 2005, March 24, 2008, April 12, 2010, July 26, 2010 and September 26, 2011; and

WHEREAS the Engineering Division has completed an update to the language of the text to specify 10' sidewalks and tree grates in the Town Center and added a standard drawing (514) for tree grates; and

WHEREAS pursuant to Section 2 of Ordinance 444-78 the City Engineer has the duty to maintain and update the Code; and

WHEREAS the City Council must first approve the proposed changes.

BE IT RESOLVED BY THE CITY COUNCIL OF THE CITY OF TUALATIN, OREGON, that:

Section 1. The following is added to Section 2.3.2.14 of the PWCC:

D. In the Town Center, the sidewalks shall be 10-feet wide and, rather than a planter strip, shall have tree wells. These wells shall have a grate per Standard Drawing 514. These grates shall be installed per manufacturers recommended specifications and additional details as identified by the Project Engineer.

Section 2. Standard Drawing 514 is added to the PWCC, as set forth in Exhibit A, which is attached and incorporated by reference.

Section 3. This resolution is effective upon adoption.

INTRODUCED AND ADOPTED this 25th day of February, 2013.

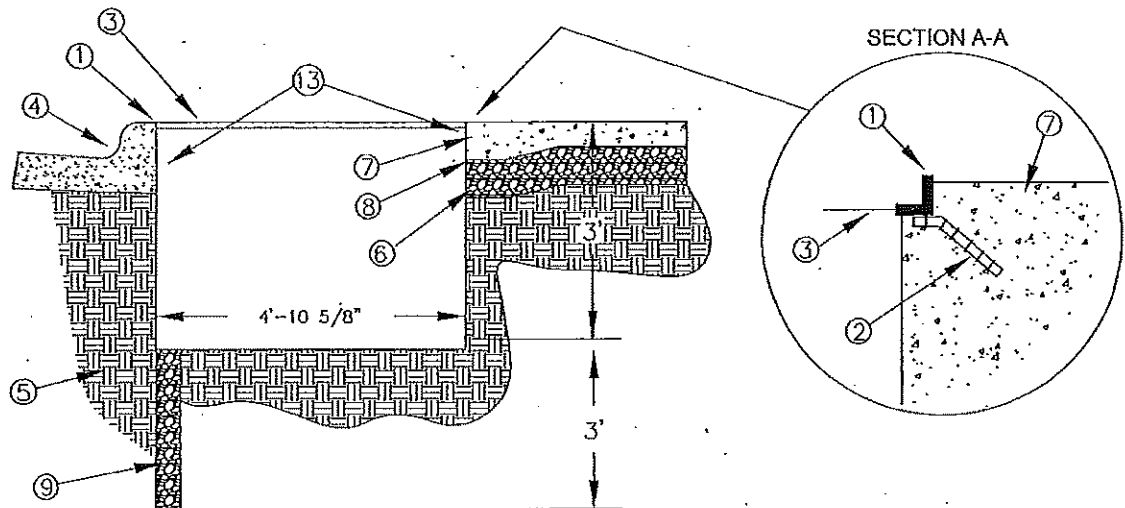
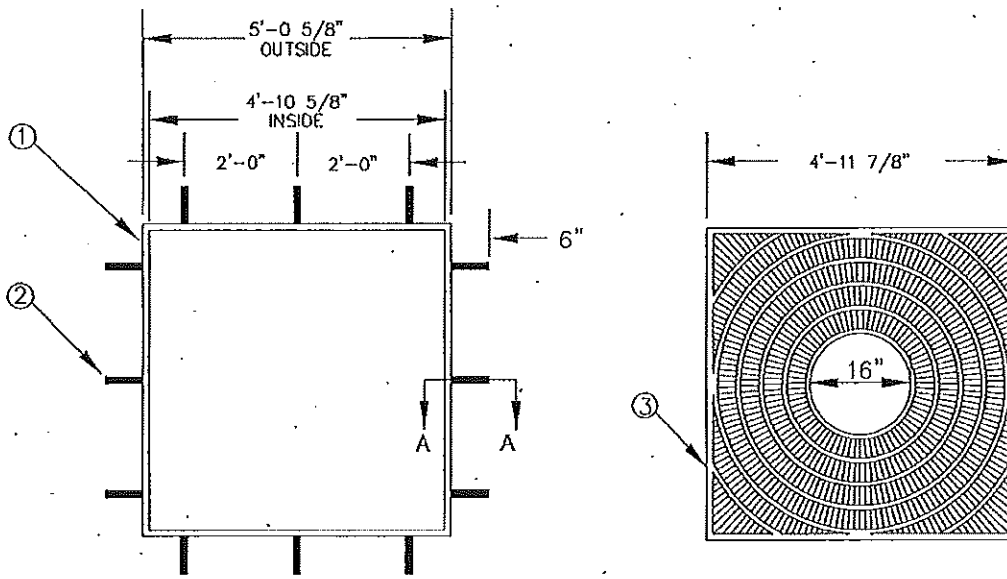
APPROVED AS TO LEGAL FORM

CITY ATTORNEY

CITY OF TUALATIN, OREGON

BY _____
Mayor

ATTEST:
BY 
City Recorder



Notes:

1. 1" X 1" X 1/4" L SHAPE STEEL FRAME.
2. #3 REBAR, WELD TO FRAME
3. 3/4" THICK TREE GRATE CAST IN 2 PIECES, NO OPENINGS GREATER THAN 3/8", 16" DIA CENTER OPENING
4. CURB AND GUTTER, REFER TO COT DRAWING NO. 470 OR NO. 471 AS APPLICABLE.
5. COMPACTED SUBGRADE.
6. MINIMUM 2" LAYER OF COMPACTED 3/4" MINUS CLEAN CRUSHED AGGREGATE.
7. 4" CONCRETE SIDEWALK, REFER TO COT DRAWING NO. 475.
8. THICKENED EDGE (6" X 6")
9. 4" DIAMETER X 3' DEEP AUGERED HOLE WITH 4" RIGID PVC PERFORATED PIPE. FILL PIPE WITH DRAIN ROCK AND COVER WITH FILTER SOCK.
10. TREE GRATE SHALL BE SQUARE 5' FAN DESIGN (W/ FLAT BLACK POWDER COAT), URBAN ACCESSORIES, POLY-GRATE II, OR APPROVED EQUAL.
11. TREE GRATE SHALL BE CAST IRON PER ASTM A-48 CLASS 3b, RECYCLED PLASTIC, OR APPROVED EQUAL.
12. TREE GRATE FRAME SHALL BE TYPE "S" FRAME, URBAN ACCESSORIES OR APPROVED EQUAL.
13. A ROOT GRATE CONTROL SYSTEM, BIOBARRIER, DEEPROOT, OR APPROVED EQUAL, SHALL BE INSTALLED ON ALL SIDES ADJACENT TO HARDSCAPE. IT SHALL BE INSTALLED VERTICALLY A MINIMUM OF 12" IN DEPTH FROM FINISH GRADE & PER MANUFACTURERS RECOMMENDATIONS.



**CITY OF
TUALATIN, OR**

TREE WELL AND GRATE

REVISED: 01/2013
VALID: 01/2013

SCALE: N.T.S.

DRAWN: JLS
APPROVED: KH

DWG NO. 514