



MEETING NOTICE

TUALATIN PARK ADVISORY COMMITTEE
December 13, 2016 - 6:00 PM

COMMUNITY SERVICES ADMINISTRATION OFFICE
Tualatin Community Park
8515 SW Tualatin Road

A. CALL TO ORDER

1. Roll Call

B. APPROVAL OF MINUTES

1. November 8, 2016

C. ANNOUNCEMENTS

1. Chair
2. Staff
3. Public

D. OLD BUSINESS

1. Parks and Recreation Master Plan Update
2. Tualatin River Greenway Trail Featured in Landscape Architecture Magazine

E. NEW BUSINESS

1. Park System Information
2. Tree City USA Application
3. Advisory Members Term Expiring

F. FUTURE AGENDA ITEMS

G. COMMUNICATIONS FROM COMMITTEE MEMBERS

H. ADJOURNMENT



DRAFT MINUTES

TUALATIN PARK ADVISORY COMMITTEE November 8, 2016

COMMUNITY SERVICES ADMINISTRATION OFFICE
Tualatin Community Park
8515 SW Tualatin Road

MEMBERS PRESENT: Kay Dix, Krista Nanton, Valerie Pratt, Anthony Warren

MEMBERS ABSENT: Dana Paulino (excused), Dennis Wells (excused)

STAFF PRESENT: Rich Mueller, Parks and Recreation Manager

PUBLIC PRESENT:

OTHER:

A. CALL TO ORDER

Vice-Chairperson Valerie Pratt called the meeting to order at 6:15 pm.

B. APPROVAL OF MINUTES

The minutes of the October 11, 2016 meeting were unanimously approved on a motion by Anthony Warren and seconded from Valerie Pratt.

C. ANNOUNCEMENTS

1. Chair

There were none.

2. Staff

Rich Mueller provided updates on the following: Pumpkin Regatta cancellation, volunteer projects, monthly trail count numbers, Youth Advisory Council update, Arbor Day newsletter, Tualatin Riverkeepers newsletter, Metro newsletter and City business newsletter.

3. Public

There were none.

D. OLD BUSINESS

1. Tualatin River Greenway Trail Design Award

Rich Mueller reported on the design award for the trail project that Paul Hennon, Community Service Director received earlier in the day at the Oregon Recreation and Park Association (ORPA) Conference in Eugene. ORPA presented the City with the 2016 Design Award for the new section of the Tualatin River Greenway Trail project.

2. Parks and Recreation Master Plan Update

The committee reviewed park service area maps and master plan chapters from the City of Salem's Comprehensive Park System Master Plan Update. Members also looked at the City of Independence Parks and Open Space Master Plan information as the City moves forward with the master plan project after the first of the year.

E. NEW BUSINESS

1. Tree City USA Application

Rich Mueller provided information about staff beginning the process of completing the application for the 2016 Tree City USA recognition. Committee members discussed the standards to qualify for this award. These standards include having a tree board which is TPARK, maintaining an urban forestry budget and celebrating Arbor Week.

2. Access Recreation Update

Information about the Metro region nonprofit organization called Access Recreation was shared. Access Recreation reviews and rates trails to best inform people with disabilities with information needed to use the trails. This project is funded through Metro and information is available on Access Recreations website and through partner organizations.

3. Development Project Update

The committee received an update on the status of trail development projects at Sagert Farms and River Ridge Apartments. Sagert Farms is in the process of completing trail design and River Ridge is actively working on the trail mitigation and enhancement.

4. Tualatin Tomorrow Progress Report

The 2016 progress report for Tualatin Tomorrow was distributed. There were several programs and projects to improve health and community connectivity listed in the report. These included maximize access to the river (trail project) and engaging youth (Youth Advisory Council).

5. Ice Age Floods National Geologic Trail

The Foundation Statement for the Ice Age Floods National Geologic Trail was distributed and reviewed by members.

F. FUTURE AGENDA ITEMS

G. COMMUNICATIONS FROM COMMITTEE MEMBERS

H. ADJOURNMENT

Valerie Pratt adjourned the meeting at 7:17 pm, on a motion from Anthony Warren and second by Krista Nanton.

DEC 2016 / VOL 106 NO 12
US \$7 CAN \$9

LANDSCAPE ARCHITECTURE MAGAZINE

THE MAGAZINE OF THE AMERICAN
SOCIETY OF LANDSCAPE ARCHITECTS

THE CLARK

Reed Hilderbrand defines the view

THE LAWN ON D

Sasaki's pop-up sticks in Boston

FARMLAND SECURITY

More is always more economical

LAWRENCE HALPRIN

TCLF celebrates a centenary

TALES OF TWO TRAILS



ABOVE

Cast in bronze and concrete, the bones of prehistoric megafauna line the new path.

BELOW

The 0.75-mile path completes a much larger trail network.

A SMALL TOWN IN OREGON LANDS ON THE ROUTE OF THE COUNTRY'S FIRST NATIONAL GEOLOGIC TRAIL.

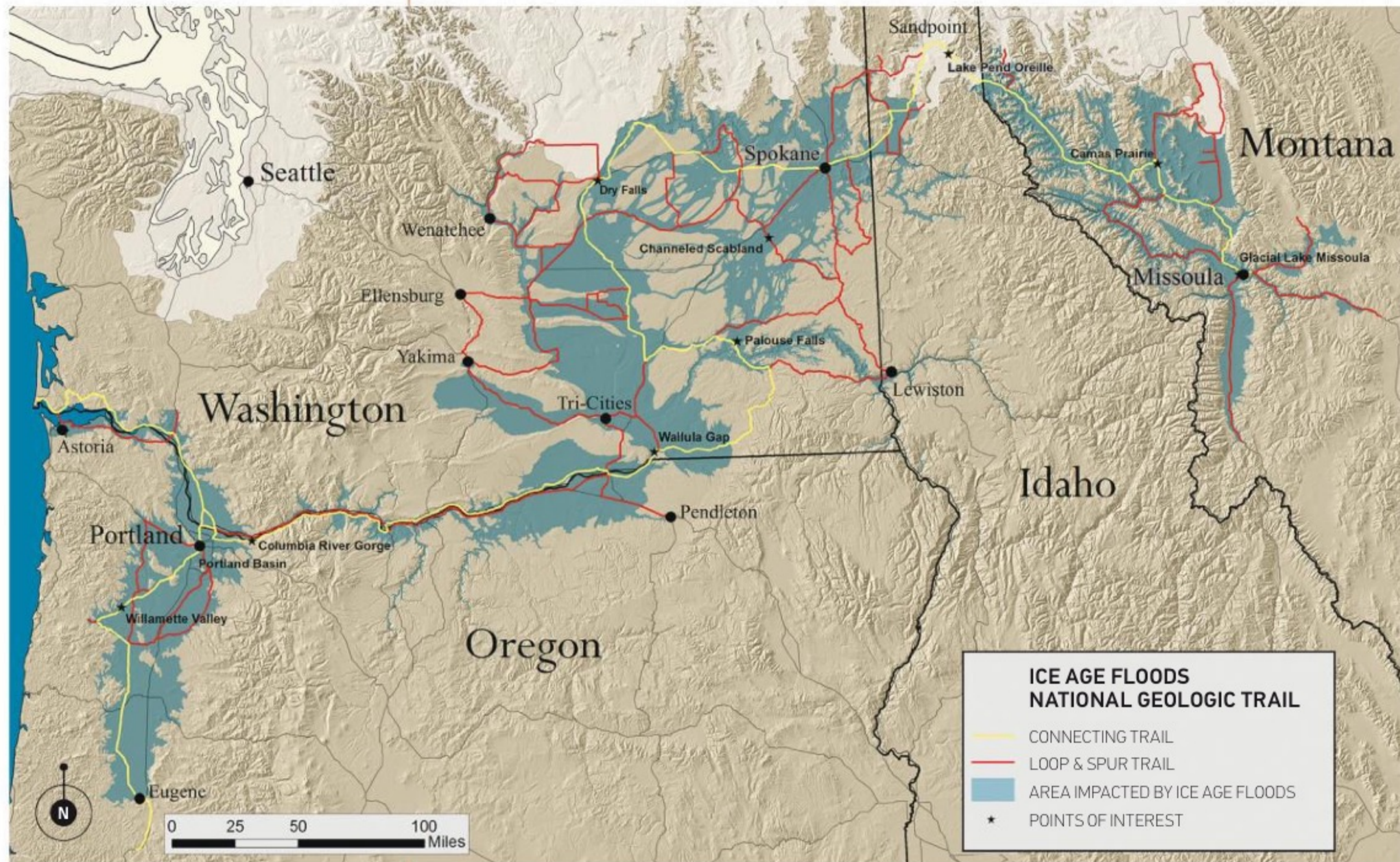
At a time when multiuse trail projects are popping up around the country, the new greenway in Tualatin, Oregon, stands out, if not for its length (it's just three-quarters of a mile) then at least for its theming. Designed by Cardno with Alta Planning + Design, the shared-use path features a stripe of blue glass to represent the end of the last Ice Age and black granite bands that mark, to scale, major historical events (such as the eruptions of Mount Saint Helens). Scattered along the route are glacial erratics and the bones, tusks, and mandibles of prehistoric megafauna, cast in concrete and bronze.

Call it an outdoor natural history museum, or, more accurately, call it a miniature geologic trail, the extremely little brother of the 3,400-mile Ice

Age Floods National Geologic Trail, which will stretch from Montana to the Pacific, passing through Idaho, Washington, and Oregon as it traces the path of the floodwaters that geologists believe carved much of the landscape of the northwestern United States.

For the past 15 years, the National Park Service has been working with state parks, research institutes, museums, and private landowners to plan the interstate trail, which will educate travelers about the Ice Age Floods, a series of unfathomably





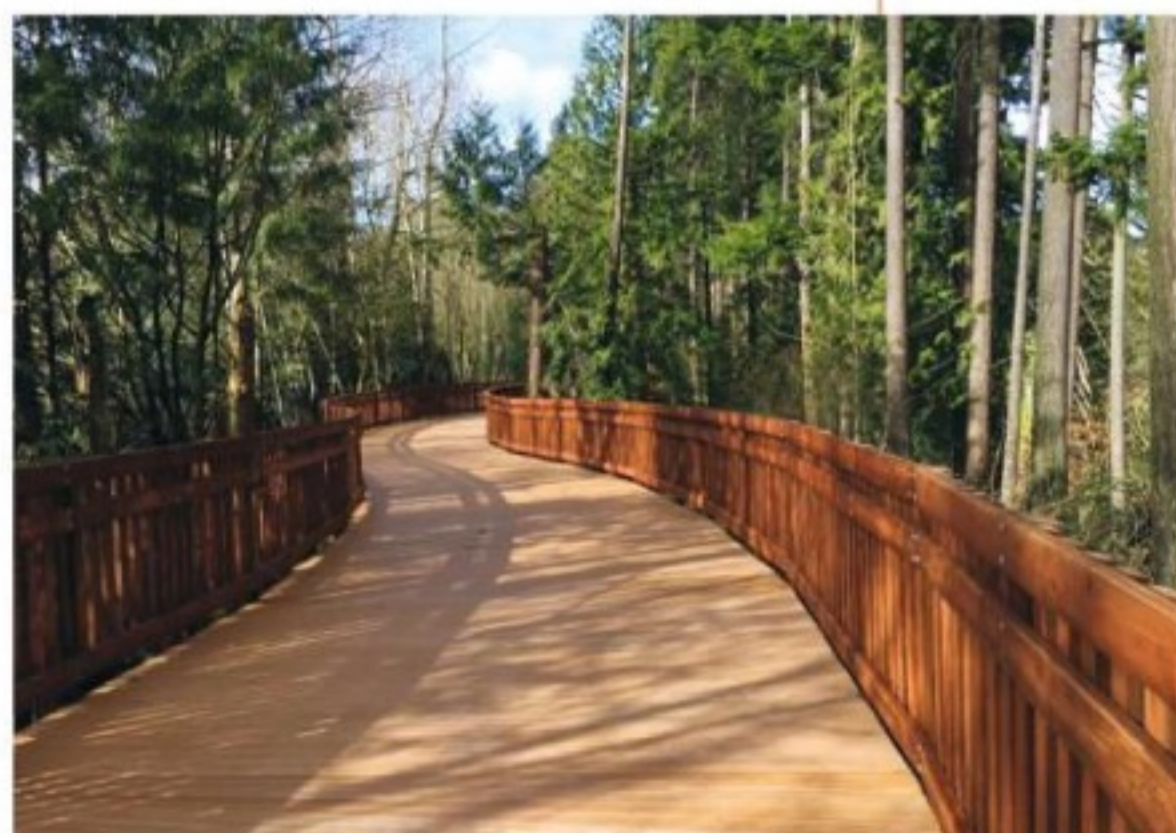
ABOVE
Now under development, the country's first national geologic trail will be 3,400 miles long.

BELOW
An elevated boardwalk in Tualatin will protect sensitive wetlands.

large floods caused by the bursting of glacial dams some 17,000 years ago. Currently in development, the national geologic trail—the first of its kind—will consist of a network of existing roads and future footpaths that will connect many of the region's geologic wonders: the scablands of eastern Washington, the rhythmites of the Willamette Valley, and—as of February 2016—Tualatin, a small town of 25,000 people tucked away 10 miles south of Portland.

ted to creatively and accurately interpreting the Ice Age Floods.

The path offers more than a travel through time, says Bruce Powers, ASLA, who served as Cardno's lead landscape architect on the project before leaving to start Powers Landscape Architecture. It is the final segment of a 4.7-mile greenway, providing long-absent connectivity that helped the project win a national award from the American Planning Association in 2016. The trail promotes health and wellness through the use of alternative transportation and increased access to nature, but it also provides a much safer route across Interstate 5, which previously required the use of an intimidating pedestrian bridge that Hennon describes as "horrible." As trail projects go, he says, "this one was vital." ●



"The efforts Tualatin has made qualified it to be a location along the trail," says Dan Foster, the superintendent of Lake Roosevelt National Recreation Area and the Ice Age Floods trail. Foster worked with Tualatin's community services director, Paul Hennon, on the city's new pathway. He says communities often attempt to lure tourists by latching onto a particular period in history but that Tualatin has been uniquely commit-

NATIONAL PARK SERVICE, TOP; CITY OF TUALATIN, BOTTOM



Put Down Roots in Tualatin Tualatin River Greenway Trail Arbor Day April 9, 2016



TREEmendous Volunteers Celebrate Arbor Day

- 165 incredible volunteers planted 350 native trees and shrubs, and installed 8 yards of mulch to impact stream health and improve forest diversity along the Tualatin River.
- 400 weed blocking mats were installed on each plant to reduce competition from invasive species and retain moisture.
- Volunteers came from two Girl Scout Troops 10912 & 10254, Starbucks, Allstate, Tualatin High School AVID & Key Club, Biotronics, Best Buy, PGE, Boy Scout pack 721 and City of Tualatin citizens and families.
- Thank you to our community partners Friends of Trees, Clean Water Services, and Hands On Portland. Thank you Starbucks for keeping volunteers caffeinated!





Tualatin River Greenway



This ODOT ConnectOregon project is funded by Oregon Lottery dollars

Small text at the bottom of the stage railing, possibly a manufacturer's mark or safety warning.







Tualatin River Greenway

#107

















Thank You
Very
MULCH!



COMMUNITY EVENTS

ARBOR WEEK 2016

Arbor Week is April 3-9, 2016. Celebrate Tualatin's trees with one of these special events or activities!

- Plant a tree! It is an act of optimism and kindness, a labor of love, and a commitment to stewardship.
- Read a book about trees. Learn to identify trees in your yard and neighborhood.
- Enjoy the outdoors. Visit a local park or take a nature hike. Attend a class on tree and plant care.
- Volunteer with a local tree-planting organization. You'll meet new people and make a difference in your community.



2015 poster contest winning submission by Tualatin Elementary Student Quentin Ross

5TH GRADE POSTER CONTEST

Theme: "Trees are _____"

Deadline for Submission is March 1, 2016

All Tualatin 5th graders are invited to participate in the City of Tualatin's annual Arbor Day Poster Contest by creating a poster with the theme "Trees are _____". The artist can fill in the blank and create the poster to reflect their theme.

One 1st, 2nd and 3rd place winner from each school and one city wide 1st, 2nd and 3rd place winner will be chosen.

The 1st, 2nd, and 3rd place winner from each school will receive a ribbon and his or her poster will be displayed at the Tualatin Public Library during Arbor Week.

In addition to the above, the 1st, 2nd and 3rd place city wide winners will be invited to the March 28 City Council meeting to be publicly recognized, receive an Arbor Week water bottle, and will have their posters framed for display at the library.

Poster contest entry forms and rules will be delivered to the schools to be distributed. Entry submission deadline is Tuesday, March 1. Winners will be announced on Thursday, March 10. For more information regarding contest rules visit our website at tualatinoregon.gov/recreation.



2015 photo contest winning submission by Casey Raz.

ARBOR WEEK PHOTO CONTEST

Theme: "Tualatin Trees"
Deadline to submit a picture is Tuesday, March 1, 2016

Submit a photo taken of a tree or stand of trees in Tualatin for a chance to win! The winning photographer will receive a \$100 cash prize. The winning photograph will be posted to the City of Tualatin website and displayed at the Tualatin Public Library during Arbor Week.

For official rules and to find out how to submit a photo please visit tualatinoregon.gov/recreation or contact Heidi Marx at hmarx@ci.tualatin.or.us.

REDWOOD ECOLOGY

All ages welcome

Find out about the unique redwood forest ecosystems of Humboldt Redwoods and Prairie Creek Redwoods State Parks. Offered by: California State Parks & Recreation

Juanita Pohl Center

Wed 4/6

12:30-1:30pm

Free

ARBOR WEEK CRAFTERNOON!

Grades K-3

Enjoy a special Arbor Week themed craft project at the library. Kids in Kindergarten through 3rd grade will enjoy this free creative program. Pre-register at tualatinoregon.gov/library

Tualatin Library Community Room

Wed 4/6

4-5pm

Free

ARBOR DAY TREE PLANTING ALONG THE TUALATIN RIVER GREENWAY TRAIL

All Ages

Celebrate trees by planting along Tualatin's new trail! Plant 1,200 native trees and shrubs with your friends, family, coworkers or group, then join the grand opening festivities as Mayor Lou Ogden opens the trail. Tools, gloves, snacks and guidance are provided. Trail entrance on the east side of Best Buy.

7041 SW Nyberg St.

Sat. 4/9

9am-12pm



STAFF REPORT

CITY OF TUALATIN

TO: Honorable Mayor and Members of the City Council

THROUGH: Paul Hennon, Community Services Director

FROM: Kelsey Lewis, Management Analyst II

DATE: 03/28/2016

SUBJECT: Consideration of **Resolution No. 5271-16** Granting Heritage Tree Status to a Tree on City Property Near the Tualatin River Greenway at Barngrover Way

ISSUE BEFORE THE COUNCIL:

Council will consider granting Heritage Tree status to a tree at the entrance to the new Tualatin River Greenway section at Barngrover Way.

RECOMMENDATION:

The Tualatin Park Advisory Committee (TPARK) acts as the City's Tree Board, and after reviewing the nomination, recommends that Council grant Heritage Tree status to this tree. Staff recommends Council grant Heritage Tree status to this tree.

EXECUTIVE SUMMARY:

On June 22, 1987, Council established a Heritage Tree Program (Ordinance No. 723-87, TMC 1-23) to recognize, foster appreciation of, and protect Heritage Trees; to inspire awareness of the contribution of trees to the community; and to encourage the planting of trees. A Heritage Tree is defined as a tree or stand of trees that, due to its age, size, species, quality or historic association, is of landmark importance and its retention as such will not unreasonably interfere with the use of the property upon which it is located. One nomination was received in the past year. TPARK, in their role as Tree Board, and in cooperation a City arborist, reviewed of the nomination. At its meeting on February 9, 2016 TPARK recommended to Council that they grant Heritage Tree status to the following tree:

Name: Tualatin River Greenway Redwood

Species: Sequoia Sempervirens (Coast Redwood)

Location: Tualatin River Greenway Entrance at Barngrover Way near intersection of Barngrover Way and Lower Boones Ferry Road

Owner: City of Tualatin

This tree will be planted April 9, 2016 as a part of the 2016 Arbor Week Celebration. It will have historic association as it is planted to commemorate the opening of the Barngrover Way to Nyberg Lane section of the Tualatin River Greenway.

OUTCOMES OF DECISION:

If granted Heritage Tree status this tree will be added to the City's Heritage Tree inventory and a plaque will be placed in front of it, identifying it as such. By granting this tree Heritage Tree status, the City shall record the tree's designation as a Heritage Tree, its site and its description on the land title.

FINANCIAL IMPLICATIONS:

This tree will be maintained by the Parks Maintenance Division as any other tree on City property with no new additional maintenance costs.

Attachments: Attachment A: Resolution
 Attachment B: Location Map & Photos

RESOLUTION NO. 5271-16

A RESOLUTION GRANTING HERITAGE TREE STATUS TO A TREE ON CITY PROPERTY LOCATED NEAR THE TUALATIN RIVER GREENWAY AT BARNGROVER WAY.

WHEREAS, Council established a program to recognize and protect Heritage Trees, as provided in Tualatin Municipal Code (TMC) 1-23; and

WHEREAS, Council finds that a Coast Redwood to be located near Tualatin River Greenway at Barngrover Way should receive Heritage Tree designation; and

BE IT RESOLVED BY THE CITY COUNCIL OF THE CITY OF TUALATIN, OREGON, that:

Section 1. The Coast Redwood to be located on City owned property in Tualatin Oregon on Tax Lot 01900 of Tax Map S124B, approximately 122° 45' 28.4" W 45° 23' 5.4" N is hereby designated a Heritage Tree under TMC 1-23. The Heritage Tree is located at the entrance to the new segment of the Tualatin River Greenway at Barngrover Way.

Section 2. The City will care for and manage the tree consistent with the provisions and restrictions in TMC 1-23.

Section 3. The City Recorder is directed to record a copy of this resolution in the County Records to provide notice of the tree's designation as a Heritage Tree.

Section 4. City staff is directed to place a plaque identifying the tree as a Heritage Tree in a visible location near the tree, place this tree on the official listing and map of Heritage Trees, and maintain said listing and map in accordance with the provisions of TMC 1-23.

Section 5. This resolution is effective upon adoption.

INTRODUCED AND ADOPTED this 28th day of March, 2016.

CITY OF TUALATIN, OREGON

BY  _____
Mayor

ATTEST:

BY:  _____
City Recorder

APPROVED AS TO FORM
BY:  _____
City Attorney

Attachment B
Photos and Location of Heritage Tree



The Coast Redwood is located at the entrance to the new segment of the Tualatin River Greenway at Barngrover Way, a City owned property in Tualatin Oregon. The tree is located on Tax Lot 01900 of Tax Map S124B, approximately 122° 45' 28.4" W 45° 23' 5.4" N.









Oregon Tree City USA
Standard 3
Accomplishment Report

City: Tualatin, OR Year: 2016

<i>Month</i>	<i>City Tree-Related Activities</i> <i>(tree maintenance and tree promotion efforts)</i>
<i>Jan</i>	<ul style="list-style-type: none"> • Announcements and information about Arbor Week poster and photo contests • January 11 & 12 – Park staff attend Oregon State University Pesticide Recertification Courses • January 12, Tualatin Park Advisory/Tree Board Meeting • January 18 - Martin Luther King Day tree planting with Tualatin High School, CUI, Acton, CSL Plasma, Kaiser Permeate, Girl Scouts, citizens and families at Ibach Park • January 30 - Winter tree planting and Crew Leader Training with Friends of Trees, Clean Water Services and Pizza Hut at Brown's Ferry Park
<i>Feb</i>	<ul style="list-style-type: none"> • February 6 - Wetlands Conservancy Tree Planting with Portland State, Tualatin High Key Club, Wetlands Conservancy, citizens and families at Nyberg Creek Wetlands • February 9 - Tualatin Park Advisory/Tree Board Meeting
<i>Mar</i>	<ul style="list-style-type: none"> • March 1 – Arbor Week poster and photo contest submittal deadline • March 8 - Tualatin Park Advisory/Tree Board Meeting • March 8 - Tree Board Meeting Arbor Week 5th Grade “Trees Are ____” Poster Contest and Teen Photo Contest selection • March 12 - Tree and shrub planting with Boy Scouts, Tualatin High School students, Sales Force, citizens and families at the Tualatin River Greenway Trail • March 28 - Arbor Week Presentation and Proclamation read by City Council • March 28 - Heritage Tree Status designation by City Council

<i>Month</i>	<i>City Tree-Related Activities</i> <i>(tree maintenance and tree promotion efforts)</i>
<i>Apr</i>	<ul style="list-style-type: none"> • April – Flying of Tree City USA Flags at City facilities • April – Arbor Week display at Tualatin Public Library • April 6 – Redwood ecology presentation by the California Parks and Recreation Department at the Pohl Center for older adults • April 6 – Arbor Week Crafternoon a free creative program at Tualatin Public Library • April 9 - Arbor Day tree planting on the Tualatin River Greenway Trail with scouts, Starbucks, Allstate, school students, Biotronics, Best Buy, PGE, citizens and families • April 19 - Tualatin Park Advisory/Tree Board Meeting • April 22 & 23 – Meals on Wheels tree and plant sale at Van Raden Community Center • April ,28 - Youth tree and shrub plantings to Impact Forest Diversity with Cedar Park Middle School & Friends of Trees at Tualatin Community Park • April 30 – Hedges Creek Greenway plantings with Tualatin High School & New Seasons Market at Ibach Park
<i>May</i>	<ul style="list-style-type: none"> • May 10 - Tualatin Park Advisory/Tree Board Meeting • May 13 – Environmental Education, tree planting and invasive species removal with Tualatin High School, Wetlands Conservancy, SOLVE, Friends of Trees, Clean Water Services and Department of Fish & Wildlife at Chieftain/Dakota Greenway • May 25 & 26 – Tualatin High School students maintain the Chieftain Dakota Greenway by planning trees, mulching and removing invasive species
<i>Jun</i>	<ul style="list-style-type: none"> • June - TEAM Tualatin volunteers plant trees, remove invasive species, water native plants and environmental education at a variety of parks and greenways • June 2 – Corporate business partner Key Knife planted trees and shrubs at the Tualatin River Greenway Trail • June 2 – Corporate business partner Veris Industries removed invasive species at Brown’s Ferry Park • June 14 - Tualatin Park Advisory/Tree Board Meeting
<i>Jul</i>	<ul style="list-style-type: none"> • July - TEAM Tualatin volunteers plant trees, remove invasive species, water native plants and environmental education at a variety of parks and greenways

<i>Month</i>	<i>City Tree-Related Activities</i> <i>(tree maintenance and tree promotion efforts)</i>
	<ul style="list-style-type: none"> • July 12 - Tualatin Park Advisory/Tree Board Meeting • July 22 – Corporate business partner Key Knife planted and watered trees and shrubs at the Tualatin River Greenway Trail
<i>Aug</i>	<ul style="list-style-type: none"> • August - TEAM Tualatin volunteers planted trees, remove invasive species, water native plants and environmental education at a variety of parks and greenways • August 2 – Corporate business partner New Seasons Market plants trees and shrubs at the Tualatin River Greenway Trail • August 23 - Tualatin Park Advisory/Tree Board Meeting
<i>Sep</i>	<ul style="list-style-type: none"> • September 13 - Tualatin Park Advisory/Tree Board Meeting • September 19 – Corporate company partner LAM Research plant tree for stream health with SOLVE at Tualatin Community Park • September 24 - SOLVE Beach and Riverside Clean Up with scouts, Oregon Lottery, SOLVE, citizens and families at Hedges Creek Greenway
<i>Oct</i>	<ul style="list-style-type: none"> • October 11 - Tualatin Park Advisory/Tree Board Meeting • October 22 - Tree planting, mulching and invasive removal with youth organizations, scouts, businesses and schools at Brown’s Ferry Park
<i>Nov</i>	<ul style="list-style-type: none"> • November 8 - Tualatin Park Advisory/Tree Board Meeting • November 19 - Tree planting with Tualatin High School, Girl Scouts, LDS Church, citizens and families at Brown’s Ferry Park
<i>Dec</i>	<ul style="list-style-type: none"> • December 3 - Holiday Tree Lighting at Starry Nights and Holiday Lights at the Lake of the Commons • December 3 – Tree and shrub planting at Highway 99 boat launch with Friends of Trees, Cleans Water Services, New Seasons Market, Just Serve, Hands on Portland, citizens and families • December 13 - Tualatin Park Advisory/Tree Board Meeting



Put Down Roots in Tualatin MLK Day at Ibach Park January 18, 2016



Volunteers made it a Day On, not a Day Off!

- 235 incredible volunteers planted 1200 native trees and shrubs to impact stream health and improve forest diversity along Hedges Creek.
- 4 yards of mulch was installed to improve plant health and preserve moisture.
- Volunteers came from CUI, Acton, CSL Plasma, Tualatin High School, Kaiser Permanente, Girl Scout troops 46002 and 45004, and City of Tualatin citizens and families.
- Thank you to our community partners Friends of Trees, Clean Water Services and Hands On Portland.



Everybody can be great.
Because anybody can serve.
You don't have to have a
college degree to serve. You
don't have to make your
subject and your verb
agree to serve.... You
don't have to know the
second theory of
thermodynamics in
physics to serve. You
only need a heart full of
grace. A soul generated
by love.

Martin Luther King, Jr.





Put Down Roots in Tualatin Crew Leader Training January 30, 2016



Take the Lead, Make a Difference!

- 30 dedicated volunteers trained with Friends of Trees and the City of Tualatin to lead other volunteers in planting projects.
- The City relies on these leaders to ensure that volunteers have fun, practice safety and plant properly.
- Thank you to our community partners Friends of Trees, Clean Water Services and the Tualatin Pizza Hut for making this a great annual event.



Congratulations to two
Tualatin youth for
completing the training!





Put Down Roots in Tualatin Nyberg Wetlands February 6, 2016



Volunteers impact Wetland health!

- 35 incredible volunteers planted 500 native trees and shrubs to impact water health and plant diversity in the Nyberg Wetlands.
- Volunteers came from Portland State University, TuHS Key Club, Tualatin High School, and City of Tualatin citizens and families.
- **Thank you to our community partners Wetlands Conservancy, Clean Water Services and Hands On Portland.**



Photos courtesy of
volunteer photographer:
Laurel Mayberry



Put Down Roots in Tualatin Tualatin River Greenway Trail March 12, 2016



First Volunteer Event Along the Trail!

- 82 incredible volunteers planted 700 native trees and shrubs to impact stream health and improve forest diversity along the Tualatin River.
- 700 weed blocking mats were installed on each plant to reduce competition from invasive species and retain moisture.
- Volunteers came from three Boy Scout Troops, Tualatin High School AVID & Key Club, Best Buy, Sales Force, and City of Tualatin citizens and families.
- Thank you to our community partners Friends of Trees, Clean Water Services and Hands On Portland.



Photos by
Laurel Mayberry



Put Down Roots in Tualatin Tualatin River Greenway Trail Arbor Day April 9, 2016



TREEmendous Volunteers Celebrate Arbor Day

- 165 incredible volunteers planted 350 native trees and shrubs, and installed 8 yards of mulch to impact stream health and improve forest diversity along the Tualatin River.
- 400 weed blocking mats were installed on each plant to reduce competition from invasive species and retain moisture.
- Volunteers came from two Girl Scout Troops 10912 & 10254, Starbucks, Allstate, Tualatin High School AVID & Key Club, Biotronics, Best Buy, PGE, Boy Scout pack 721 and City of Tualatin citizens and families.
- Thank you to our community partners Friends of Trees, Clean Water Services, and Hands On Portland. Thank you Starbucks for keeping volunteers caffeinated!





Put Down Roots in Tualatin Tualatin Community Park April 28, 2016



Youth volunteers making an impact on forest diversity.

- 100 Cedar Park Middle School volunteers maintained 1500 recently planted native trees and shrubs.
- Students cleared invasive Himalayan blackberry, English ivy and marked plants with biodegradable tape in order for summer volunteers to identify plants and water.
- A bucket brigade was formed to mulch plants installed on Arbor Day 2015.
- Thank you to our community partner Friends of Trees.





Put Down Roots in Tualatin Ibach Park April 30, 2016

Hedges Creek and Ibach Park get volunteer TLC!

- 35 amazing volunteers cleared invasive Himalayan blackberry and English ivy and completed plant care on 4,000 recently planted native trees and shrubs.
- 42 yards on mulch was installed on a 6500 square foot bank of native trees and shrubs to reduce maintenance and improve plant health.
- Thank you to our citizens, Tualatin High School and New Seasons. This was a robust project that could not have been accomplished without all of you!





Put Down Roots in Tualatin Environmental Education Outreach May 13, 2016

Students explore environmental stewardship and volunteer opportunities.

- 300 Tualatin High School biology students attended the outreach event at the Chieftain/ Dakota Outfall.
- SOLVE, Wetlands Conservancy, Republic Services, Friends of Trees and Clean Water Services, Oregon Department of Fish & Wildlife Law Enforcement and the City of Tualatin presented topics relevant to our community health, the environment, volunteering and sustainability.
- TuHS students have volunteered at the Outfall since 2013, planting native trees and shrubs, mulching and removing invasive Himalayan blackberry, Reed canary grass and English ivy.



Thank you to
our partners
for your
participation
and sharing
your expertise
with students.

Adam Gorske—Republic Services, Rachel Burr—Clean Water Services, Quintin Bauer—SOLVE, Megan Garvey—Wetlands Conservancy, Jenny Bedell-Stiles—Friends of Trees, Sheila O'Connor—ODFWS, Tom Steiger—City of Tualatin



Put Down Roots in Tualatin

Tualatin High School Biology Students

Chieftain Dakota Outfall

May 25-26, 2016

Students impact water quality and forest diversity.

- 300 Tualatin High School biology students participated in maintenance of the water quality facility that collects water from 110 acres including their school.
- 8 yards of plant material was removed, 200 native trees, shrubs, rushes and sedges were installed.
- TuHS students have volunteered at the Outfall since 2013, planting native trees and shrubs, mulching and removing invasive Himalayan blackberry, Reed canary grass Morning glory and English ivy.
- Thank you students, TuHS teachers: Daniel Rott, Ron White, Kelly Myers, Sara Childers, Kelly Perry, volunteer Dave Skoglund and City staff: Tom Steiger, Brian Smith, Ryan Flett, Jace Rode and Will Alloway for making a difference.





Put Down Roots in Tualatin

Brown's Ferry Park / Veris Industries

June 2, 2016



Corporate employees contribute to stream health and diversity.

- Veris Industries employees spent the morning at Brown's Ferry Park removing invasive Himalayan blackberry from the banks of Nyberg Creek.
- 1200 native trees and shrubs planted by volunteers in November 2015, received TLC by Veris staff. Their efforts will ensure a better survival rate and reduce the threat of invasive plant species from taking over the site.
- Thank you to Veris Industries staff and management for making Tualatin a better place to live, work, play and volunteer!





Put Down Roots in Tualatin

Key Knife / Tualatin River Greenway Trail

June 2, 2016



Corporate employees contribute to forest diversity and stream health.

- Key Knife employees spent the afternoon along the new Tualatin River Greenway Trail completing final details on the Greenway Trail restoration site.
- 1200 native trees and shrubs planted by volunteers spring 2016, received TLC from Key Knife staff. Their efforts staking, mulching and watering plants will ensure a better survival rate and reduce the threat of invasive plant species from taking over the site.
- Thank you to Key Knife staff and management for making Tualatin a better place to live, work, play and volunteer!



Thank you Key Knife!





Put Down Roots in Tualatin

Key Knife / Tualatin River Greenway Trail

July 22, 2016



Corporate employees contribute to forest diversity, stream health and maintenance on the TRGT.

- Key Knife employees from around the world and the United States spent the morning along the new Tualatin River Greenway Trail completing final details on the Greenway Trail restoration site and boardwalks.
- 1200 native trees and shrubs planted by volunteers spring 2016, received TLC from Key Knife staff. Watering plants, taking inventory on plant survival, and avoiding poison oak were key restoration site tasks. The boardwalk received final touches as a Key Knife army armed with wrenches tightened bolts and another group checked for missing or raised deck screws
- Thank you to Key Knife staff and management for making Tualatin a better place to live, work, play and volunteer!



**Thank you Key Knife and
Happy 30th Anniversary!**



Put Down Roots in Tualatin

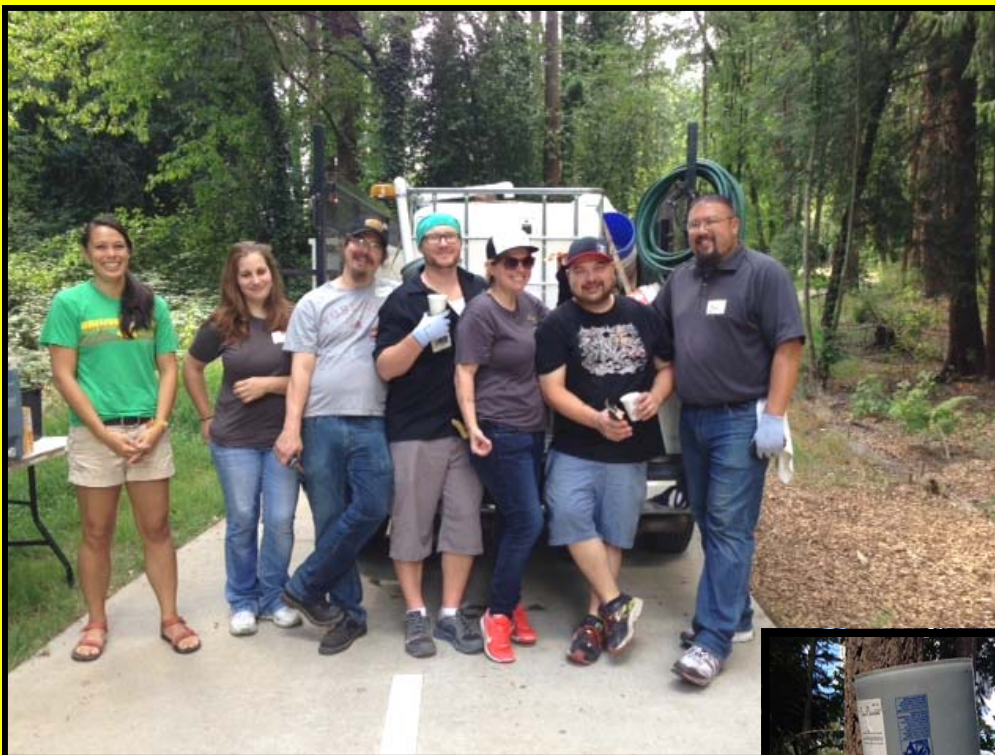
New Seasons / Tualatin River Greenway Trail

August 2, 2016



Corporate employees contribute to forest diversity, stream health and maintenance on the TRGT.

- New Season's produce team spent the afternoon along the new Tualatin River Greenway Trail caring for 1200 native trees and shrubs planted by volunteers in the spring.
- Watering plants (300 gallons in 47 minutes), removing invasive blackberry and picking up trash were the key contributions made by this enthusiastic team.
- Thank you to New Season's staff and management for making Tualatin a better place to live, work, play and volunteer!



**Thank you New Seasons
Produce Team!**



TEAM Tualatin

June-August 2016

Teens Building a Strong Community, Work Ethics, and Friendships.

70 Tualatin Teens Volunteered 2466 Hours Enhancing the Community

- **Jurgens Garden:** Planted and maintained the Jurgens Community Garden.
- **Invasive Plant Removal:** Brown's Ferry, Tualatin Community Park, Ibach, Jurgens, Hedges Creek, Atfalati, Tualatin River Greenway Trail, Little Woodrose, Operations.
- **Water Native Plantings:** Provided thousands of gallons of water to native plantings in Brown's Ferry, Atfalati, Ibach, Hedges Creek, and the Tualatin Greenway Trail.
- **Fire Hydrants:** Painted 104 Fire Hydrants in the Martinazzi Woods and Ibach neighborhoods. A new TEAM Summer Record.
- **Truck Washes:** Washed dozens of Tualatin City Fleet Vehicles.
- **Painting:** Painted 32 tables at Tualatin Community Park, painted the Rustic Shelter and painted out graffiti on the I-5 bridge.
- **Playgrounds:** Moved Fibar and sand at Tualatin Community Park and Ibach.
- **Event Set Up:** Performed event set up for Art Splash, Crawfish, and Volunteer Appreciation events.
- **Dog Park Fire Hydrants:** Designed and painted OSU and U of O Fire Hydrants at the Dog Park.
- **Storm Drain Caps:** Installed storm drain markers in two new Tualatin neighborhoods and updated them in Victoria Woods neighborhood.
- **Pollinator Plantings:** Planted and maintained Milkweed plants at Brown's Ferry Park.
- **Community Partnerships:** Partnered with TuHS Upward Bound program to remove invasive species from Little Woodrose. Toured New Seasons market to learn about sustainable food sources
- **Education:** Explored the Tualatin Wetlands with Wetlands Conservancy Group, learned new skills, and discovered new career paths. Learned new games—Ninjas and Guards, Color scavenger hunt, Spoons, Mafia, Chauncey.
- **Fish Run:** Restored the Jurgen's Fish Run.
- **Litter Pick Up and Park Care:** The Commons, Tualatin Community Park, Hedges Creek.
- **International Connections:** Hosted 60 international students from Taiwan, South Korea and Japan and made international friendships.
- **Recycling:** Recycled street signs, tables, and chairs.
- **Bark Chips:** Moved bark chips at Water Quality Facilities, the Beaver Trail, Ibach, and Brown's Ferry.
- **Department Collaboration:** Worked with Parks, Police, Facilities, Water, Streets and Volunteer Services.
- **Life Skills:** Learned of the happiness that comes from volunteering, overcoming obstacles, making meaningful connections with others, feeling a part of the community, and new experiences. **Thank you Andrew Bonica!**





Put Down Roots in Tualatin

LAM Research / SOLVE / COT

Tualatin Community Park, Sept. 19, 2016

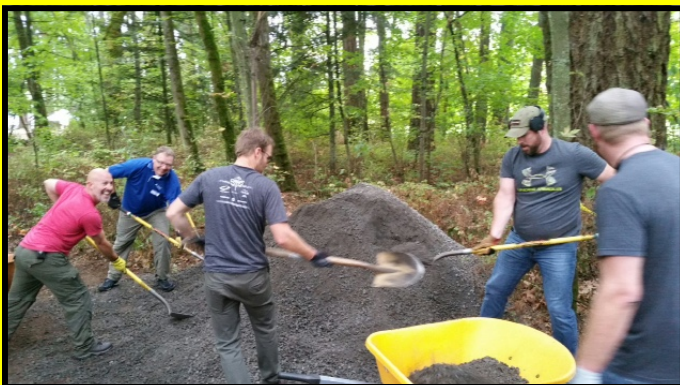


Corporate employees contribute to forest diversity, stream health and maintenance in Tualatin Community Park.

- 48 LAM Research employees spent the morning in TCP with Parks Maintenance staff.
- 150 native trees and shrubs were planted, mulched and watered along the banks of the Tualatin River by the boat launch to reduce erosion and improve plant diversity.
- 20 yards of rock was put in place to complete 300 feet of trail which will improve traction during the upcoming winter months.
- 150 pounds of litter was picked up throughout the 27 acre park.
- Thank you to LAM Research staff and management for making Tualatin a better place to live, work, play and volunteer!



Thank you !
Tom - Ryan—Brian
Miguel—Brian—Jon
For leading a
Stellar Event!





Put Down Roots in Tualatin SOLVE / COT at Hedges Creek September 24, 2016



Hedges Creek gets some TLC!

- 53 incredible volunteers removed 800 pounds of litter from Hedges Creek along 90th, Sweek pond and along the pedestrian trail to impact stream and forest health .
- 4 yards of invasive Himalayan blackberry was removed along the route to improve forest diversity.
- Volunteers came from Cub Scout Troop 799 (their 3rd year in a row), The Oregon Lottery, SOLVE and families and citizens of Tualatin.
- **Thank you to our great Crew Leaders and TuHS students for providing environmental education, support to COT and for so successfully engaging volunteers!**





Put Down Roots in Tualatin Brown's Ferry Park October 22, 2016



Volunteers plant, mulch and make a difference in the environmental health of our community.

- 150 incredible volunteers planted 600 native trees, shrubs and pollinator friendly flowers to impact stream health and improve habitat diversity along the Tualatin River.
- 4 yards of mulch was installed to provide nutrients and give plants a healthy start.
- 6 yards of invasive Himalayan blackberry and English ivy were removed from the site.
- Volunteers came from MKA Muslin Youth Organization, Ayanic Bond, R&H Construction, Boy Scouts, Tualatin High School AVID & Key Clubs, Tigard Environmental Club, LaSalle High School, PSU fraternities and Tualatin citizens and families.
- Thank you to our community partners; Friends of Trees, Clean Water Services, New Seasons Market and Hands On Portland.





Put Down Roots in Tualatin Brown's Ferry Park November 19, 2016



Be Thankful for Volunteers!

- 165 incredible volunteers planted 800 native trees, shrubs and pollinator friendly flowers to impact stream health and improve habitat diversity along the Tualatin River.
- 4 yards of mulch was installed to provide nutrients and give plants a healthy start.
- Volunteers came from Tualatin High School Key Club, Girl Scouts, LaSalle Biology students, Boy Scouts, Tualatin High School AVID, LDS Elders and Sisters, and Tualatin citizens and families.
- Thank you to our community partners; Friends of Trees, Clean Water Services, New Seasons Market, Just Serve and Hands On Portland.



Thank you to City Staff:
Jace Rode, Ryan Flett, Tom
Steiger and Brian Smith !





Put Down Roots in Tualatin

99 W Boat Launch

December 3, 2016



Volunteers are better than elves!

- 36 incredible volunteers planted 350 native trees and shrubs to impact stream health and improve habitat diversity along the Tualatin River.
- 1 yard of litter was collected from the boat launch parking area and riverbank.
- Volunteers came from AmeriCorps, Tualatin High School Key Club, Tualatin High School AVID, LDS Elders, and Tualatin citizens and families.
- Thank you to our community partners; Clean Water Services, New Seasons Market, Just Serve and Hands On Portland.



Thank you to City Staff:
Jace Rode, Ryan Flett, Tom
Steiger and Shelly Helgerson!



STAFF REPORT

CITY OF TUALATIN

TO: Honorable Mayor and Members of the City Council

THROUGH: Paul Hennon, Community Services Director

FROM: Kelsey Lewis, Management Analyst II

DATE: 03/28/2016

SUBJECT: Consideration of **Resolution No. 5271-16** Granting Heritage Tree Status to a Tree on City Property Near the Tualatin River Greenway at Barngrover Way

ISSUE BEFORE THE COUNCIL:

Council will consider granting Heritage Tree status to a tree at the entrance to the new Tualatin River Greenway section at Barngrover Way.

RECOMMENDATION:

The Tualatin Park Advisory Committee (TPARK) acts as the City's Tree Board, and after reviewing the nomination, recommends that Council grant Heritage Tree status to this tree. Staff recommends Council grant Heritage Tree status to this tree.

EXECUTIVE SUMMARY:

On June 22, 1987, Council established a Heritage Tree Program (Ordinance No. 723-87, TMC 1-23) to recognize, foster appreciation of, and protect Heritage Trees; to inspire awareness of the contribution of trees to the community; and to encourage the planting of trees. A Heritage Tree is defined as a tree or stand of trees that, due to its age, size, species, quality or historic association, is of landmark importance and its retention as such will not unreasonably interfere with the use of the property upon which it is located. One nomination was received in the past year. TPARK, in their role as Tree Board, and in cooperation a City arborist, reviewed of the nomination. At its meeting on February 9, 2016 TPARK recommended to Council that they grant Heritage Tree status to the following tree:

Name: Tualatin River Greenway Redwood

Species: Sequoia Sempervirens (Coast Redwood)

Location: Tualatin River Greenway Entrance at Barngrover Way near intersection of Barngrover Way and Lower Boones Ferry Road

Owner: City of Tualatin

This tree will be planted April 9, 2016 as a part of the 2016 Arbor Week Celebration. It will have historic association as it is planted to commemorate the opening of the Barngrover Way to Nyberg Lane section of the Tualatin River Greenway.

OUTCOMES OF DECISION:

If granted Heritage Tree status this tree will be added to the City's Heritage Tree inventory and a plaque will be placed in front of it, identifying it as such. By granting this tree Heritage Tree status, the City shall record the tree's designation as a Heritage Tree, its site and its description on the land title.

FINANCIAL IMPLICATIONS:

This tree will be maintained by the Parks Maintenance Division as any other tree on City property with no new additional maintenance costs.

Attachments: Attachment A: Resolution
 Attachment B: Location Map & Photos

RESOLUTION NO. 5271-16

A RESOLUTION GRANTING HERITAGE TREE STATUS TO A TREE ON CITY PROPERTY LOCATED NEAR THE TUALATIN RIVER GREENWAY AT BARNGROVER WAY.

WHEREAS, Council established a program to recognize and protect Heritage Trees, as provided in Tualatin Municipal Code (TMC) 1-23; and

WHEREAS, Council finds that a Coast Redwood to be located near Tualatin River Greenway at Barngrover Way should receive Heritage Tree designation; and

BE IT RESOLVED BY THE CITY COUNCIL OF THE CITY OF TUALATIN, OREGON, that:

Section 1. The Coast Redwood to be located on City owned property in Tualatin Oregon on Tax Lot 01900 of Tax Map S124B, approximately 122° 45' 28.4" W 45° 23' 5.4" N is hereby designated a Heritage Tree under TMC 1-23. The Heritage Tree is located at the entrance to the new segment of the Tualatin River Greenway at Barngrover Way.

Section 2. The City will care for and manage the tree consistent with the provisions and restrictions in TMC 1-23.

Section 3. The City Recorder is directed to record a copy of this resolution in the County Records to provide notice of the tree's designation as a Heritage Tree.

Section 4. City staff is directed to place a plaque identifying the tree as a Heritage Tree in a visible location near the tree, place this tree on the official listing and map of Heritage Trees, and maintain said listing and map in accordance with the provisions of TMC 1-23.

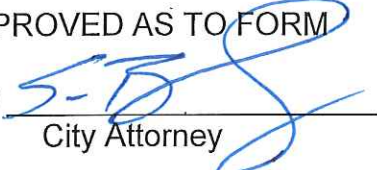
Section 5. This resolution is effective upon adoption.

INTRODUCED AND ADOPTED this 28th day of March, 2016.

CITY OF TUALATIN, OREGON

BY  _____
Mayor

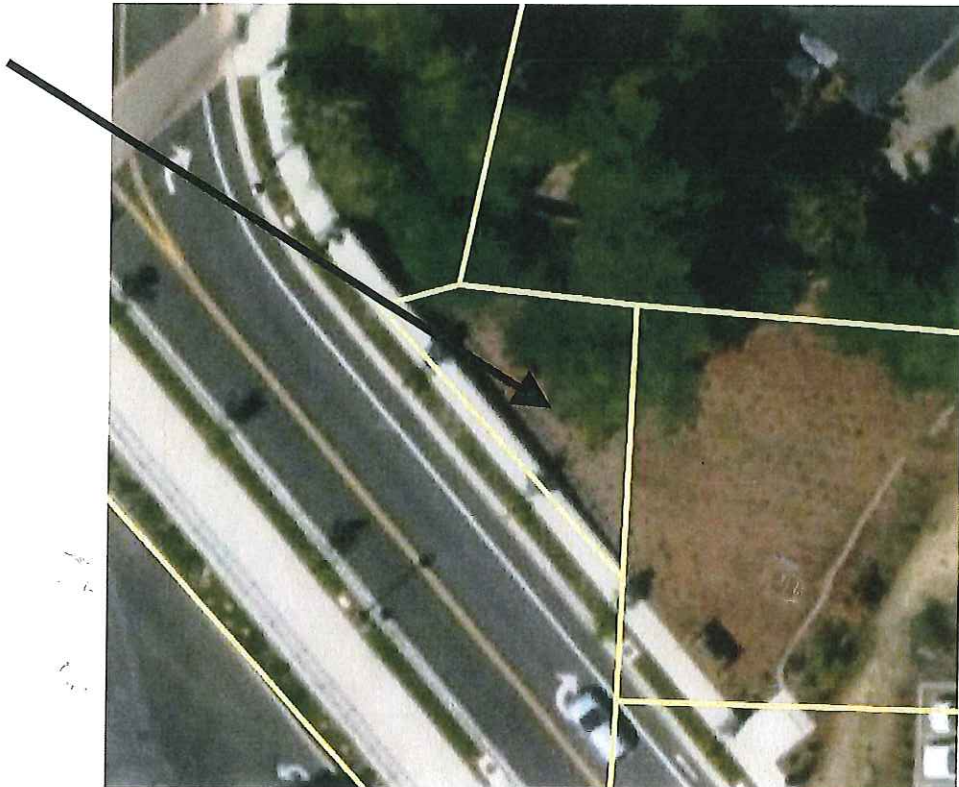
ATTEST:
BY:  _____
City Recorder

APPROVED AS TO FORM
BY:  _____
City Attorney

Attachment B
Photos and Location of Heritage Tree



The Coast Redwood is located at the entrance to the new segment of the Tualatin River Greenway at Barngrover Way, a City owned property in Tualatin Oregon. The tree is located on Tax Lot 01900 of Tax Map S124B, approximately 122° 45' 28.4" W 45° 23' 5.4" N.









**2017 Annual Plan
Small Tree City USA Community**

City of Tualatin Community Forestry Program

I. Tree Planting

- Offer monthly volunteer tree planting in city parklands, greenways and natural areas (Jan-Dec)
- Continue tree planting partnerships with Friends of Trees, Clean Water Services, Hands On Portland, Wetlands Conservancy, Just Serve, schools, youth serving organizations, faith based organizations, corporate businesses and health care providers (Jan-Dec)
- Promote volunteer tree and shrub planting opportunities and accomplishments in quarterly parks and recreation guide (Feb, May, Aug, Dec)
- Street tree plantings (Sept-Dec)

II. Tree Maintenance

- Hire temporary summer staff to help with watering & maintenance (May-Sept)
- Survey trees in natural area for potential hazards, remove as needed (Jan-Dec)
- Native tree restoration in greenways and natural areas (Oct-April)
- Street tree pruning (Jan-Feb)
- Park tree pruning (March)

III. Administration

- Work on funding with local partners (May)
- Begin update of the parks and recreation master plan which includes possible revision of tree standards and codes (Feb-Dec)
- Park & Tree Board monthly meetings (Jan-Dec)
- Review new development tree plans (Jan-Dec)
- Review residential tree permits (Jan-Dec)

IV. Education Activities

- Send Parks staff to Pesticide Recertification Courses(Jan)
- Continue partnership with organizations for student environmental education and community learning enhancement (Jan-Dec)
- Conduct Crew Leader Training with Friends of Trees (Jan)
- Provide students environmental education outreach (May- Aug).
- Plan Arbor Week activities with schools, nonprofit organizations, agencies and businesses (Jan-Apr)
- Enhance the heritage trees web page and provide links on the City and department web pages (Sept-Dec)
- Arbor Week tree poster and photo contest (Jan-March)
- Arbor Week presentation and proclamation at City Council Meeting (March)
- Arbor Week activities, observance and tree planting (April)
- Environmental and tree education with high school students with tree planting (May)

**City of Tualatin
COMMUNITY FORESTRY PLANNING CALENDAR**

JANUARY	FEBRUARY	MARCH
Arbor Week poster and photo contest announcement	Arbor Week Planning	Attend annual Oregon Urban Forestry Conference
Finalize volunteer planting schedule	Street tree pruning	Park tree pruning and maintenance
Confirm tree orders with nursery distributors	Volunteer tree planting	Volunteer tree planting
Street tree pruning	Review resident tree permits	Arbor Week presentation and proclamation to City Council
Community tree planting	Native tree restoration in green spaces	Native tree restoration in green spaces
Arbor Week planning	Review development tree plans	Review resident tree permits
Native tree restoration in green spaces	Arbor Week poster and photo contest	Review development tree plans
Review resident tree permits	Park & Tree Board Meeting	Park & Tree Board Meeting
Review development tree plans		
Park & Tree Board Meeting		
APRIL	MAY	JUNE
Arbor Day ceremony and volunteer tree planting	Tree inventory and inspection	Tree inventory and inspection
Native tree restoration in green spaces	Environmental and tree education for high school students with tree planting	Water and plant care of new trees
Review resident tree permits	Review resident tree permits	Volunteer tree planting
Review development tree plans	Review development tree	Review resident tree permits
		Review development tree

Park & Tree Board Meeting	plans Park & Tree Board Meeting	plans Park & Tree Board Meeting
JULY	AUGUST	SEPTEMBER
Water and plant care of new trees Plan next year's tree plantings Volunteer tree planting Review resident tree permits Review development tree plans Park & Tree Board Meeting	Tree inspections Order street trees for fall plantings Volunteer tree planting Water and plant care of new trees Review resident tree permits Review development tree plans Park & Tree Board Meeting	Finalize tree planting plans for next year Volunteer tree plantings Water and plant care of new trees if needed Review resident tree permits Review development tree plans Park & Tree Board Meeting
OCTOBER	NOVEMBER	DECEMBER
Volunteer tree planting Staff plant street trees Review resident tree permits Review development tree plans Native tree restoration in green spaces Park & Tree Board Meeting	Work on TCUSA application Volunteer tree plantings Staff plants street trees Native tree restoration in green spaces Review resident tree permits Review development tree plans Park & Tree Board Meeting	Finish TCUSA application and mail it to ODF Order trees for winter/spring planting Volunteer tree plantings Staff plant street trees Native tree restoration in green spaces Review resident tree permits Review development tree plans