



## MEETING NOTICE

**TUALATIN PARK ADVISORY COMMITTEE**  
**August 8, 2017 - 6:00 PM**

**COMMUNITY SERVICES ADMINISTRATION OFFICE**  
**Tualatin Community Park**  
**8515 SW Tualatin Road**

---

**A. CALL TO ORDER**

1. Roll Call

**B. APPROVAL OF MINUTES**

1. July 11, 2017

**C. ANNOUNCEMENTS**

1. Chair
2. Staff
3. Public

**D. OLD BUSINESS**

1. Parks and Recreation Master Plan Update
  - a. Project Advisory Committee Meeting #1
  - b. Community Engagement and Outreach
2. Hedges Creek Erosion Projects
3. Trail Projects Update
4. Pohl Center Supervisor
5. Crawfish Festival

**E. NEW BUSINESS**

1. Clean Water Services Project
2. Metro Updates
  - a. Stafford Basin Property
  - b. Trail Plan Revision
3. September Meeting

**F. FUTURE AGENDA ITEMS**

**G. COMMUNICATIONS FROM COMMITTEE MEMBERS**

**H. ADJOURNMENT**



# PARKS & RECREATION MASTER PLAN

## Project Advisory Committee Meeting #1

Date: Tuesday, 7/25/17

Time: 6:30 - 8:30 pm

Location: Tualatin Public Library

### *Agenda*

6:30 - 6:40 pm	Welcome and Introductions
6:40 - 6:45 pm	Public Comment
6:45 - 7:00 pm	Project Overview <ul style="list-style-type: none"> <li>• Planning process</li> <li>• Desired outcomes</li> <li>• Role of the PAC</li> </ul>
7:00 - 7:15 pm	Presentation: Planning Context
7:15 - 7:30 pm	Pop-Up Activity
7:30 - 8:20 pm	Discussion: Parks, Recreation, Events, Arts, Greenways, Natural Areas <ul style="list-style-type: none"> <li>• What is working well?</li> <li>• What needs more attention?</li> <li>• What opportunities do you see for the future?</li> <li>• What challenges should this plan address?</li> <li>• What groups do we need to involve?</li> </ul>
8:20 - 8:30 pm	Close/Next Steps

### *Handouts*

- PAC Roles and Responsibilities
- Community Engagement and Outreach Responsibilities
- PowerPoint Presentation



# PARKS & RECREATION MASTER PLAN

## COMMUNITY ENGAGEMENT & OUTREACH RESPONSIBILITIES

There are many groups to involve in the planning process. An overview of Community Engagement tasks is provided below.

### **Stakeholder Interviews** (Late July to Mid-August 2017)

These one-on-one or small group interviews (1-3 people) will be held early in the planning process to identify opportunities and issues for the Master Plan to address.

#### **MIG-LED INTERVIEWS:**

- 7 City Council members
- 1 School District Superintendent

### **Pop Up Activities** (Early August to Late September 2017)

These City-led activities will use display boards to ask general questions about the community's vision and priorities. Pop-up activities are best held in conjunction with different, well-attended events to engage a broad cross-section of the public, plus members of the community that may not otherwise be involved in the planning process.

#### **CITY-LED ACTIVITIES:**

- National Night Out
- Crawfish Festival
- Concerts on the Commons
- Movies on the Commons
- Library events (leave the boards up for a month in the lobby)
- Juanita Pohl Center events (leave the boards up for a month in the lobby)

### **OTHER OPPORTUNITIES:**

- Additional concerts
- Additional movies
- Volunteer projects

## **Park/Greenway Walk (Mid-August to Late September 2017)**

A City-led facilitated activity will use comment cards/worksheets/photos for participants to document what they like, what they want improved and/or what opportunities they see for a particular site.

### **CITY-LED WALKS:**

- Tualatin Community Park
- Atfalati Park (with Saum Creek Greenway) – Bilingual
- Ibach Park
- Jurgens Park
- Brown's Ferry Park
- Tualatin River Greenway Trail

### **OTHER OPPORTUNITIES:**

Note: The city will consider accessibility, the number of people who may participate, and resources available to conduct the walk, when prioritizing these other opportunities.

- Tualatin Commons
- Tualatin River Greenway Trail
- Saum Creek
- Sweek Pond Natural Area near Heritage Center
- Little Woodrose Natural Area
- Chieftan/Dakota Greenway

## **Focus Groups (Mid-August to Late September 2017)**

Focus group meetings will allow us to dial into the park and recreation needs of specific groups to identify their key issues, priorities and perceived needs.

### **MIG-LED ACTIVITIES:**

- Tualatin Arts Advisory Committee (TAAC)
- Sports (Youth and Adult)
- Businesses (employers, Chamber of Commerce)

**CITY-LED ACTIVITIES:**

- Partners/Collaborators (e.g., Historical Society, Tualatin Riverkeepers, Clean Water Services, Wetlands Conservancy, YMCA, Willowbrook Arts Camp, Alder Creek, Metro, etc.)
- Citizen Involvement Organizations (CIO's)
- Nonprofit and Service Organizations
- Seniors (Aging Task Force, JPC Advisory Committee)
- Youth (Youth Advisory Committee, Teen Library Committee, Tualatin High Student Body Leadership)

## Online Survey

The online survey will collect feedback on a variety of topics, such as: favorite parks and recreation opportunities, frequency of park use, program participation, interest in public art, needs or desired improvements for parks, facilities, programs, trails, greenways and natural areas and funding opportunities to pay for service and system enhancements. Advertising for the online survey will aim to reach a wide variety of people and as many people as possible.

**GROUPS TO TARGET THROUGH ADVERTISING, EBLASTS, FLYERS AND SIGNAGE:**

- All residents on city mailing lists
- School Events (back to school)
- School Clubs, boosters, music, PSO's
- Health Care Providers
- Nonprofit Organizations
- Commercial and Private Recreation Providers
- Businesses
- Hispanic/Latino residents and businesses
- Recreation activity participants (event, classes, activity)
- Library activity participants
- Summer Reading Program participants
- Library patrons
- Volunteers (all projects, including teens)
- Art Walk
- Apartment Complexes
- Homeowners Associations
- Faith Based Communities
- City Advisory Committees
  - Architectural Review
  - Art
  - Budget
  - Core Area Parking
  - Juanita Pohl Center
  - Library
  - Park
  - Planning
  - Tualatin Tomorrow
  - Youth Advisory Council
  - Teen Library Committee

- Sport Leagues (Adult and Youth)
  - Basketball
  - Baseball
  - Lacrosse
  - Soccer
  - Softball
  - Volleyball
- Service Clubs
  - Elks
  - Kiwanis
  - Lions
  - Rotary
- Nonprofit and Service Organizations
  - Caring Closet
  - Community Action
  - Community Partners for Affordable Housing
  - Community Warehouse
  - Friends of Tualatin Library
  - Foundation for Tigard-Tualatin Schools
  - Tualatin Historical Society
  - Mask and Mirror Theater
  - Meals on Wheels
  - Neighbors Nourishing Communities
  - Tigard-Tualatin Family Resource Center
  - Tualatin Library Foundation
  - Tualatin Schoolhouse Pantry
  - Tualatin Riverkeepers
  - Tualatin Together
  - Veterans of Foreign Wars
  - Wetlands Conservancy
  - Willowbrook Arts Camp
  - Winona Grange
  - YMCA

## Hispanic/Latino Outreach and Meetings

(Late August to early September 2017 and Winter/Spring 2018)

A facilitated Spanish-language focus group meeting (conducted in late August or early September 2017) and a prioritization workshop (conducted in Winter to Spring 2018) help ensure the views of Hispanic/Latino residents are represented in the Master Plan. The meeting materials, summary documents and the results will be available in Spanish and in English.

## Community Workshop and Online Forum

**(Winter/Spring 2018)**

The community workshop, which will involve Project Advisory Committee and Tualatin Arts Advisory Committee members, will involve stakeholders and interested residents in making decisions about priority projects, programs and services for the Master Plan. An online forum will be available after the community workshop information for those who are not able to attend the workshop.



# PARKS & RECREATION MASTER PLAN

## PAC ROLES/RESPONSIBILITIES

The **Project Advisory Committee (PAC)** will guide the development of Tualatin’s Parks & Recreation Master Plan (Master Plan). The PAC will consider information developed through comprehensive community engagement and outreach efforts with the general public, city advisory committees, Citizens Involvement Organizations, and other affiliated organizations serving Tualatin, such as schools, agencies, businesses, and non-profit groups. The Project Advisory Committee will make a final recommendation on plan acceptance to the Council.

### Meeting Schedule

The PAC is anticipated to meet six times between July 2017 and Summer 2018. The fifth PAC meeting is anticipated to be a community workshop. The final meetings will be scheduled based on project needs and progress. All meetings will be held on Tuesday evenings, starting at 6:30 pm in the Tualatin Public Library, unless otherwise informed.

Table 1: Anticipated PAC Meeting Schedule

Tentative Dates*	Meeting Topic
7/25/17	PAC #1: Community Context/SWOT Discussion
9/12/17	PAC #2: Existing System and Services Overview
10/24/17	PAC #3: Outreach Findings and Needs
Winter 2018, TBD	PAC #4: Goals, Recommendations, ADA Findings & Capital Projects
Spring 2018, TBD	PAC #5: Priorities and Trade-offs (PAC/TAAC Community Workshop)

<b>Summer 2018, TBD</b>	PAC #6: Draft Plan Review
-------------------------	---------------------------

## PAC Responsibilities

To provide the greatest support for developing the Master Plan, PAC members are asked to fulfill the following:

- Attend all six PAC meetings over the course of the year;
- Read and be prepared to discuss any planning documents and draft reports that are provided in advance of meetings;
- Engage in constructive discussion and be open to alternative strategies and points of view;
- Provide high level guidance and feedback that acknowledges and draws on the diversity of opinions and outlooks represented by the PAC's constituencies;
- Discuss interrelated park and recreation issues;
- As requested, help promote and/or facilitate public outreach activities to inform constituents and other community members about the master plan process; and
- Provide direction, raise questions during meetings and work with the project team to ensure the success of the Master Plan and the planning process.

## PAC Goals

To ensure a useful and productive exchange of information, the PAC will conduct its work with the following goals in mind:

- **Fun:** Engage in exciting, interactive discussions about the future of parks and recreation in Tualatin.
- **Learning/Sharing:** Be open to learning about new concepts and sharing your best ideas to contribute to the development of the Master Plan.
- **Inclusivity:** Help us create an environment that provides opportunities for many voices to be heard. Suggest ways to involve underrepresented groups in outreach activities.
- **Respect:** Show courtesy, honesty and respect for each other during all communications, especially when giving or receiving contrary opinions and positive or negative feedback.
- **Leadership:** Be bold in charting the future of parks and recreation in Tualatin and help share this vision with other members of the community.
- **Enthusiasm:** Speak enthusiastically about the Master Plan to your family, neighbors, colleagues, community leaders and politicians to generate momentum and excitement about the project.
- **Inquisitiveness:** If you have any questions, please ask! Your questions will help us improve Master Plan communications and messages.





# PARKS AND RECREATION MASTER PLAN

## PROJECT ADVISORY COMMITTEE MEETING #1

Tuesday, July 25<sup>th</sup> 2017 | 6:30 to 8:30 pm



# PAC Meeting Agenda

- Project overview
- PAC role
- Planning context
- Pop-up activity
- Group Discussion
- Next steps



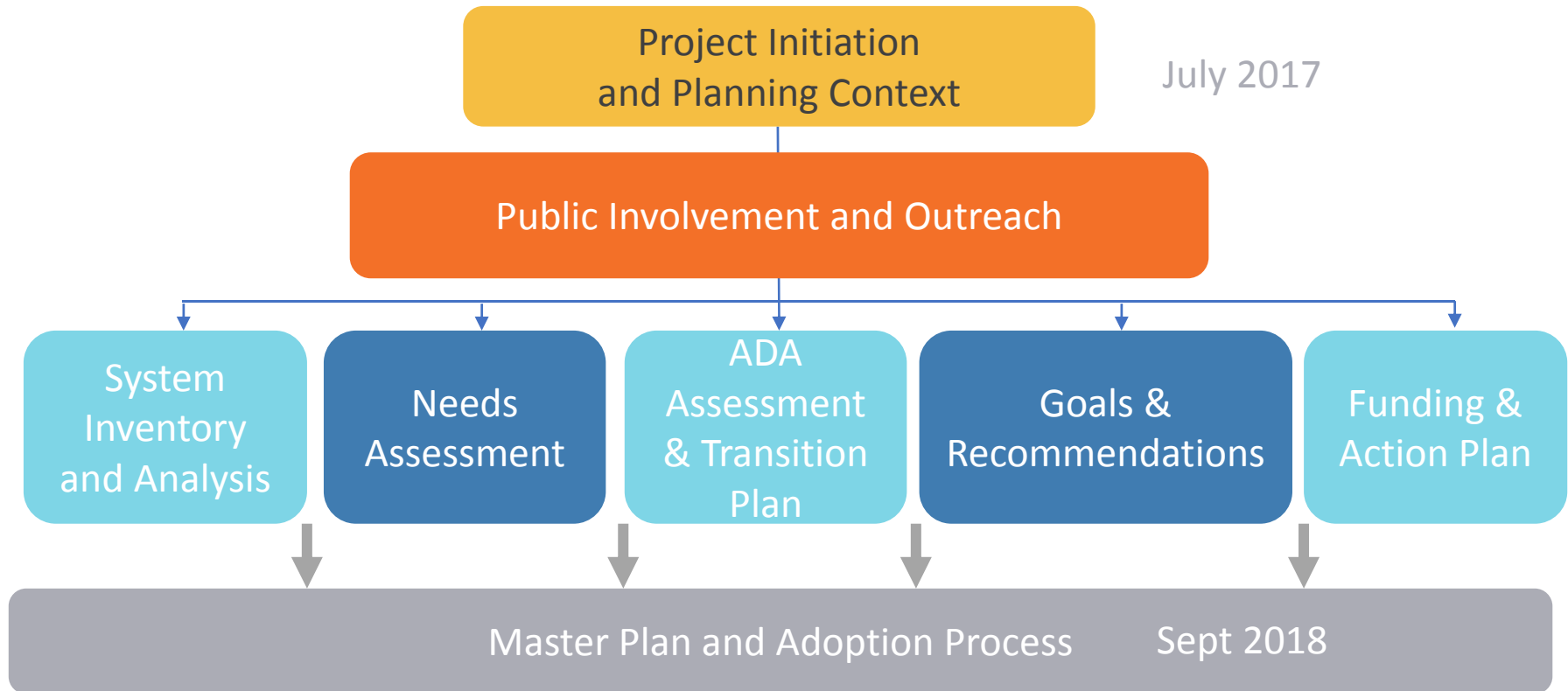
# PROJECT OVERVIEW

# Master Plan Process

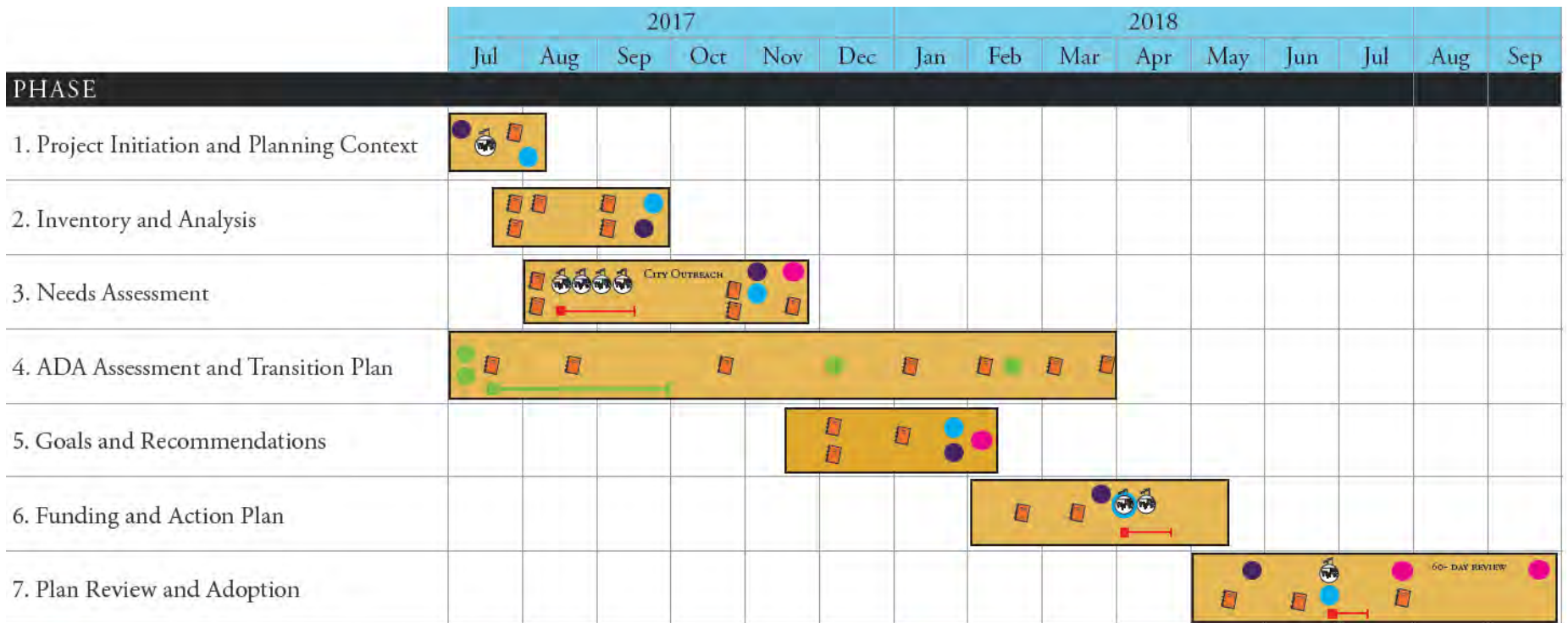
The 2018 Parks & Recreation Master will:

- Provide guidance for parks, recreation facilities, programs, greenways and natural areas
- Update the 1983 Plan
- Address needs now and in the future

# Planning Process



# Project Timeline



● PAC Meetings

● PMT Meetings

● Council Meetings

● ADA Meetings

🗣️ Public Engagement/Meetings/ Activities

➡️ Online Questionnaire

📄 Major Deliverable

➡️ ADA Surveying

A blue horizontal banner with a white graphic of three stylized human figures in profile, facing right, on the left side. The text "Community Outreach" is written in white, bold, sans-serif font on the right side of the banner.

# Community Outreach

- Stakeholder Interviews
- Online Questionnaire
- Focus Groups
- Hispanic/Latino Outreach and Meetings
- Pop Up Activities
- Park and Greenway Walks
- Community Workshop and Online Forum
- Draft Plan Review Forum

# City Project Groups

## Project Management Team

Project  
Advisory  
Committee

Tualatin  
Arts  
Advisory  
Committee

ADA Task  
Force

City  
Council



# PAC Role

- Attend 6 meetings
- Consider information developed through community engagement and outreach efforts
- Review / guide planning documents
- Make a final recommendation on plan acceptance to City Council



# PLANNING CONTEXT



# Location in Region



- Southern suburb of Portland
- Along I-5, between I-205, 99W and 217

# Demographics

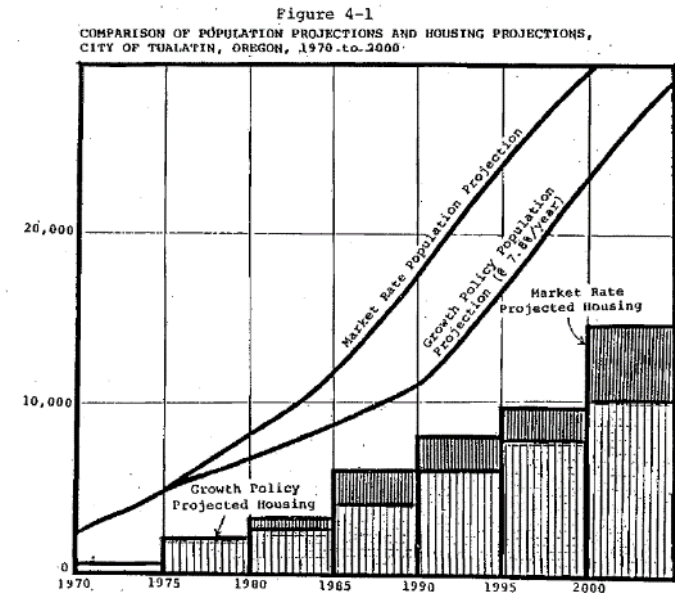
	Population (2000)	Population (2010)	Population (2016)
<b>City of Tualatin</b>	<b>22,791</b>	<b>26,160</b>	<b>26,840</b>
Portland Region	1,927,881	2,226,009	2,424,955
State of Oregon	3,421,399	3,831,074	4,076,350

## % Growth since 2000



# Population Growth

- The Master Plan will consider the needs of current residents, plus those of future residents as Tualatin continues to grow in next 20 years



Source: The Island Company.

# Population Characteristics

## LOCAL ATTRIBUTES

- Median Age: **35.1**
- Hispanic or Latino: **19.4%**
- Median Household Income: **\$61,250**
- High School Graduate or Higher: **91.4%**
- Bachelor's Degree or Higher: **41%**

## REGIONAL WORKFORCE ATTRIBUTES

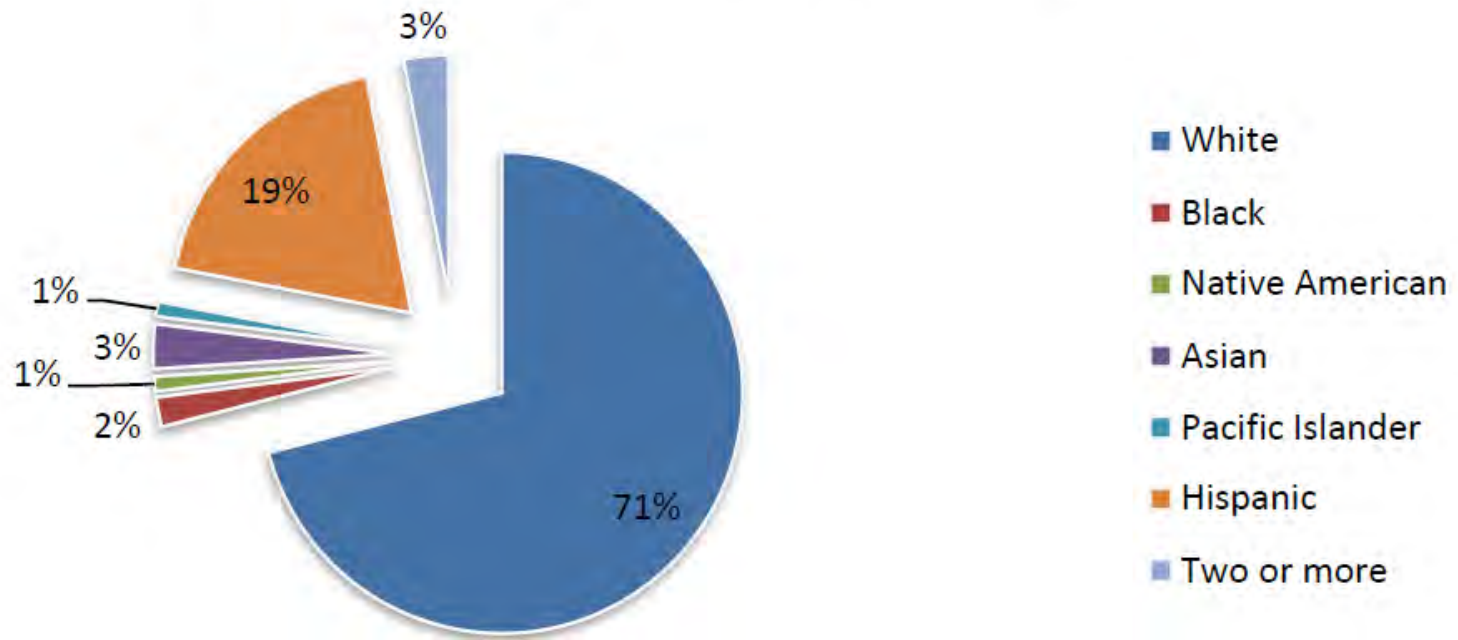
- Bachelor degree and higher: **34.1%**
- K-12 graduation rate: **90.5%**
- Regional workforce: **1.02 Million**
- Regional average wages: **\$49,131**
- Regional average manufacturing wages: **\$55,825**

*Source: American Community Survey (ACS) 2013 5-year data*



# Population Attributes

## City of Tualatin Population by Race & Ethnicity



Source: American Community Survey (ACS) 2013 5-year data



**TUALATIN**  
Accessible, Inclusive & Vibrant  
Parks and Recreation

**PAST PLANNING EFFORTS**

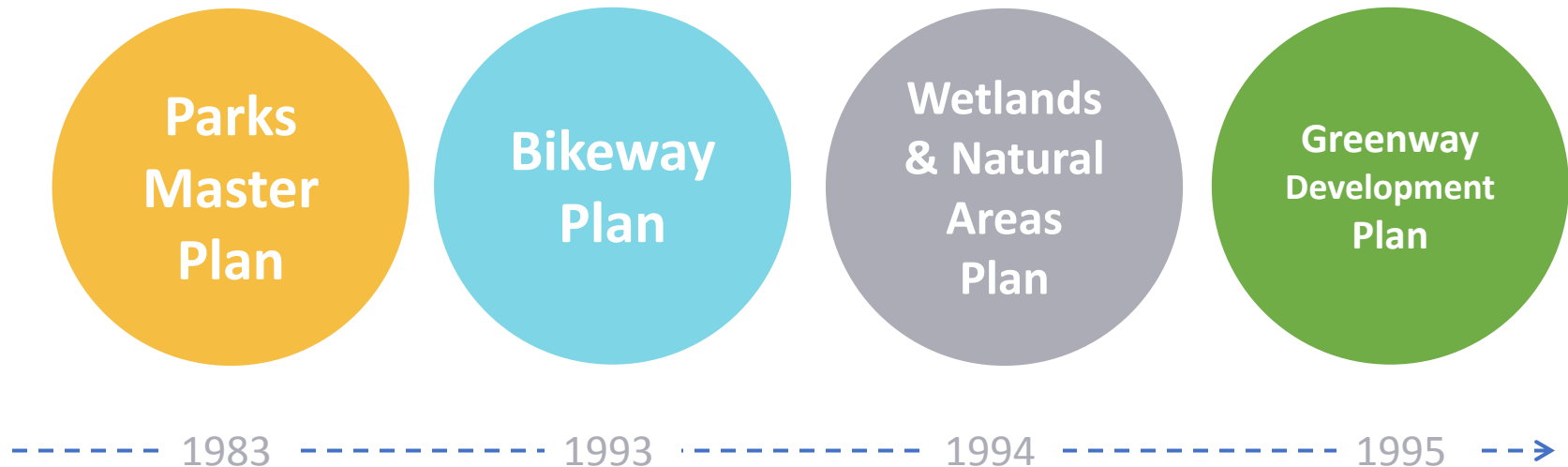


# Comprehensive Plan & Code

## Tualatin Development Code: Chapter 15: Parks and Recreation

Tualatin's Development Code incorporates information from several earlier plans completed between 1983 and 1995.

### Tualatin Comprehensive Plan & Development Code



# 1983 Parks Master Plan

City of Tualatin

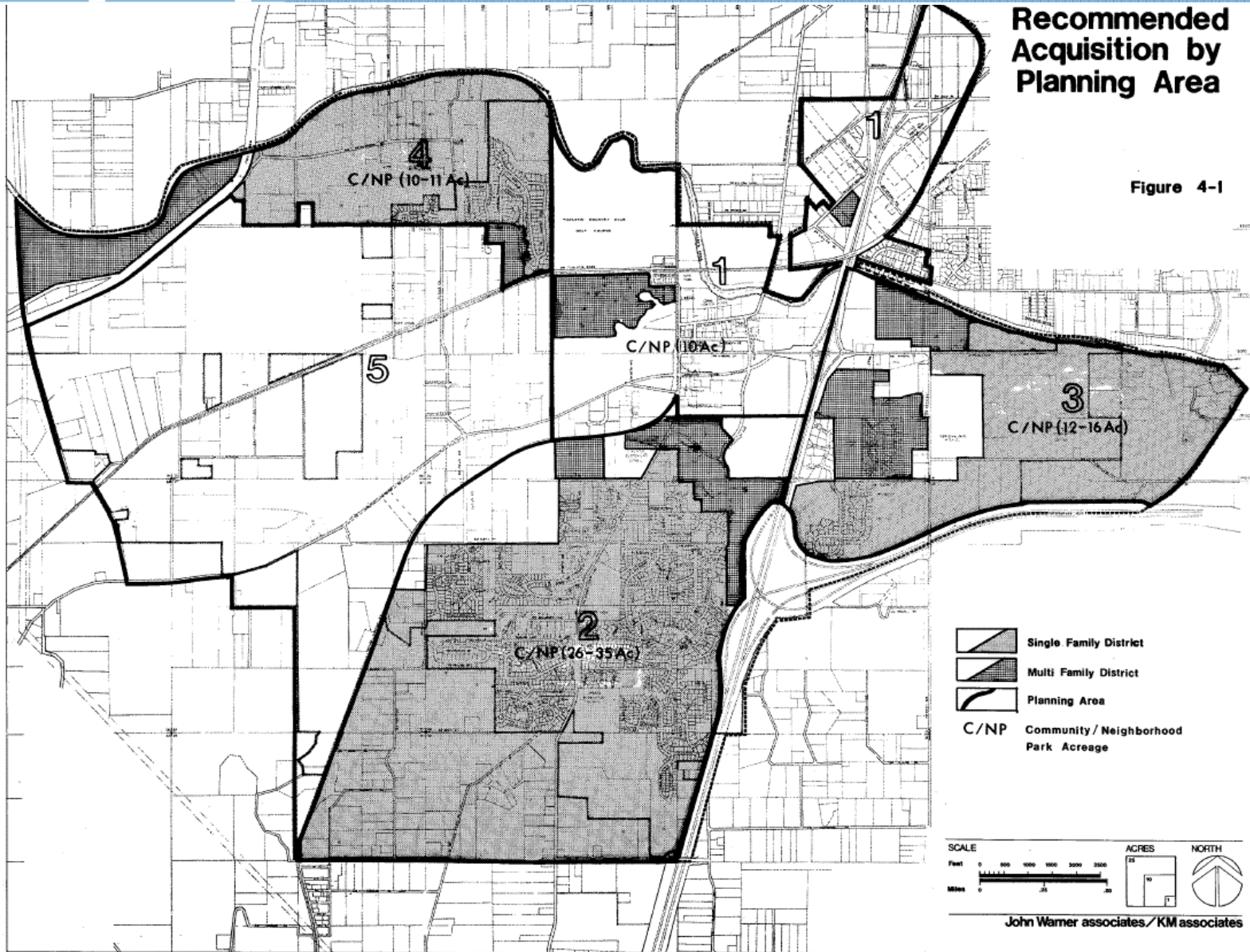
## Parks and Recreation Master Plan

December 1983

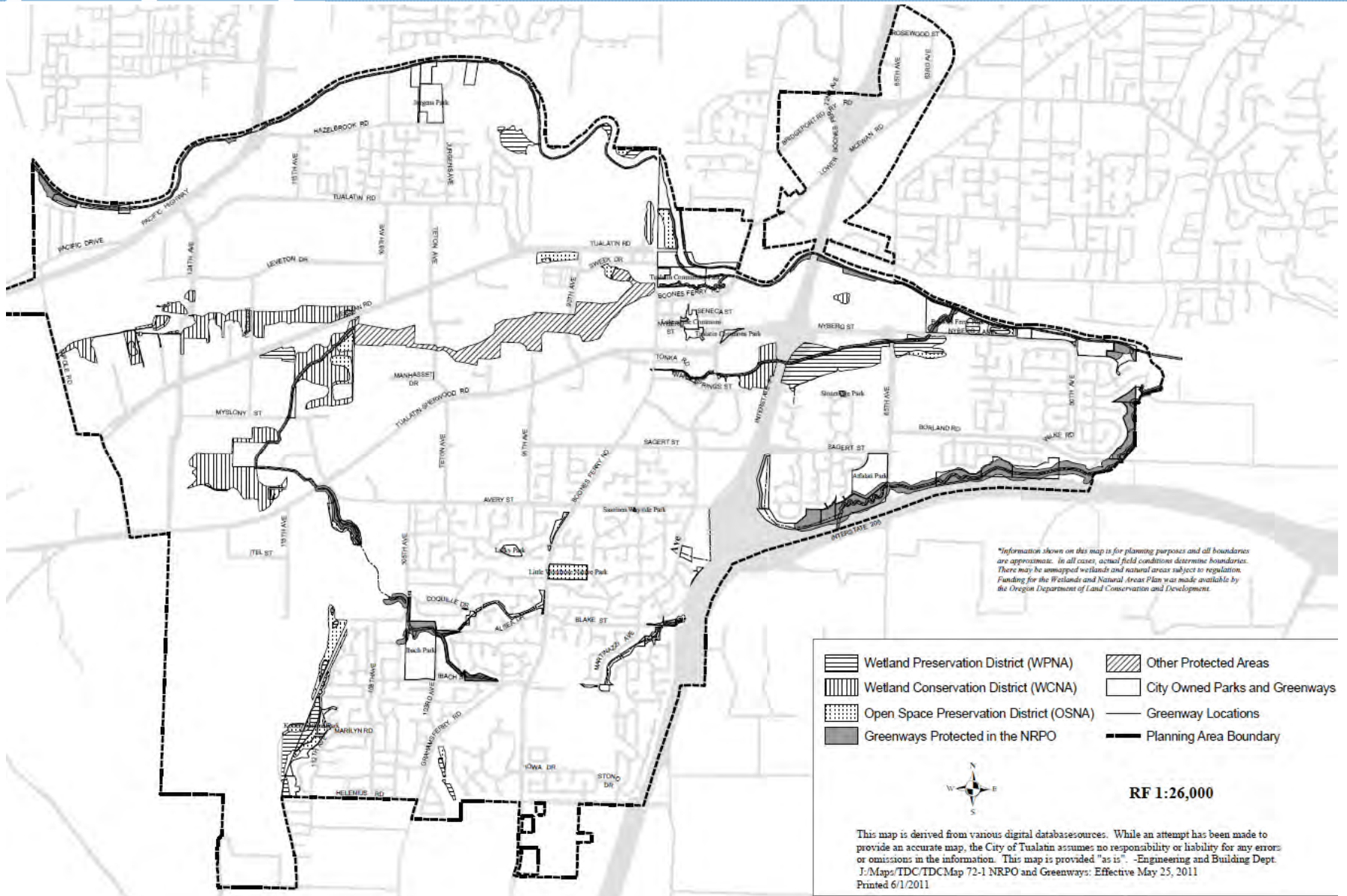
PARKS	Acres	Type	FACILITIES													
			Developed	Semi Developed	Undeveloped	Lawn Area	Play Equipment	Ballfield	Walkway	Tennis Court	Basketball Court	Restrooms	Picnic Tables	Shelter	Natural Area	
LAFKY	2.00	MN	●			●	●		●		●		●			
LITTLE WOODROSE NATURE	6.50	N		●					●							●
SAARINEN WAYSIDE	.05	VP	●						●							
STONERIDGE	.20	VP	●			●	●		●					●		
TUALATIN COMMUNITY*	28.60	C	●			●	●	●	●	●	●	●	●	●	●	●
Sub-Total	37.35															
<b>GREENWAYS</b>																
CHIEFTAIN	1.59		●	●												
COLUMBIA	1.83		●	●												●
DAKOTA HILLS	2.69		●	●	●				●							●
HI-WEST	1.60		●		●				●							
INDIAN MEADOWS	3.45				●				●							
NYBERG CREEK	11.45				●											●
SAUM CREEK	8.35				●											●
SHANIKO	2.72				●											●
Sub-Total	33.68															
TOTAL	71.03															

SEE APPENDIX A FOR MORE DETAILED DESCRIPTIONS OF PARKS AND GREENWAYS

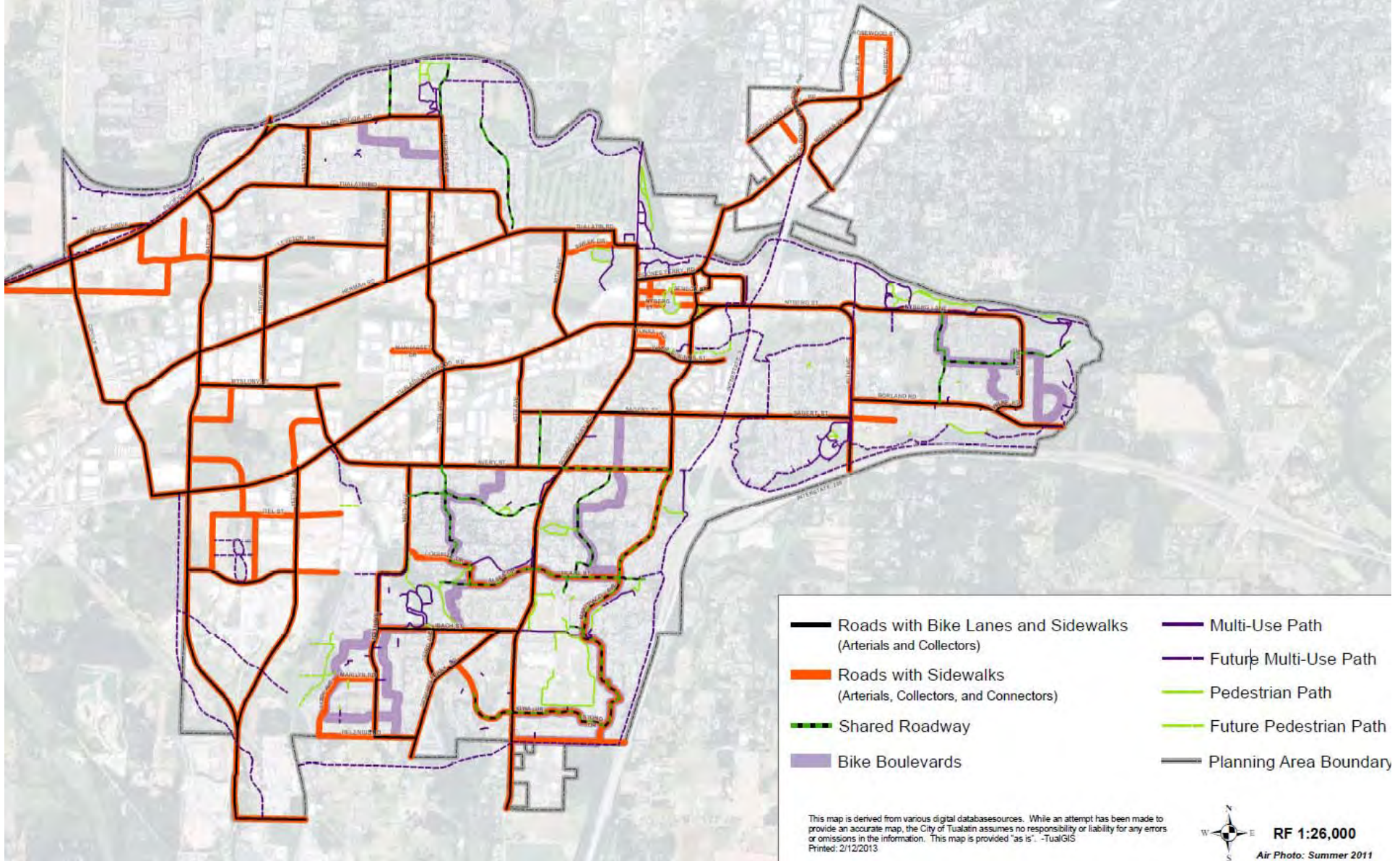
# 1983 Master Plan



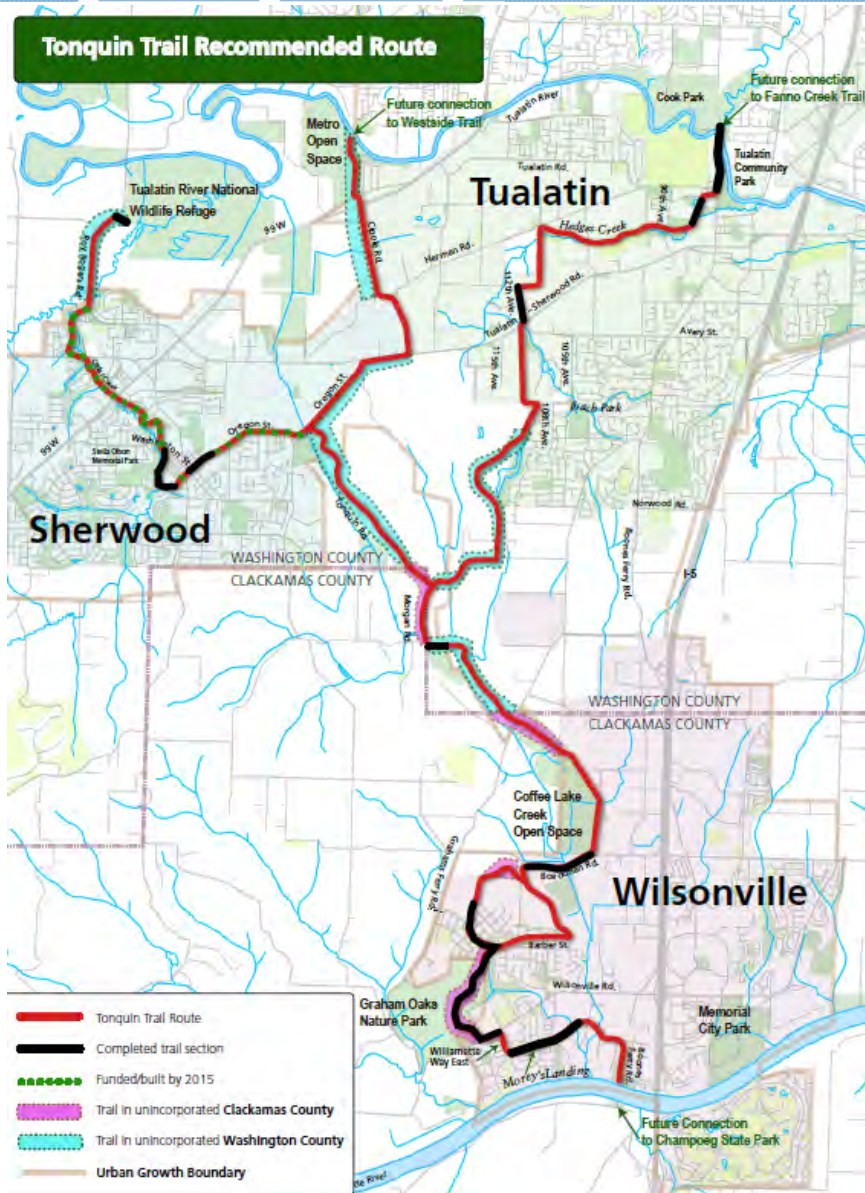
# 2011 Protected Areas



# 2013 Pedestrian/Bike Paths

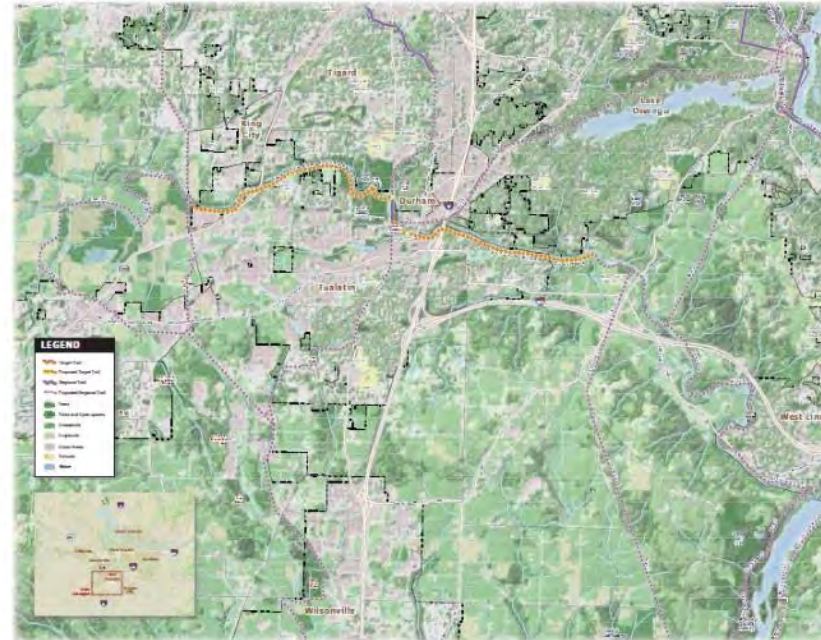


# 2015 Trails Planning



## Tualatin River Greenway

A continuous trail along the Tualatin River in Tualatin provides residents north and south of the river with the experience of nature as they travel for recreation and jobs.

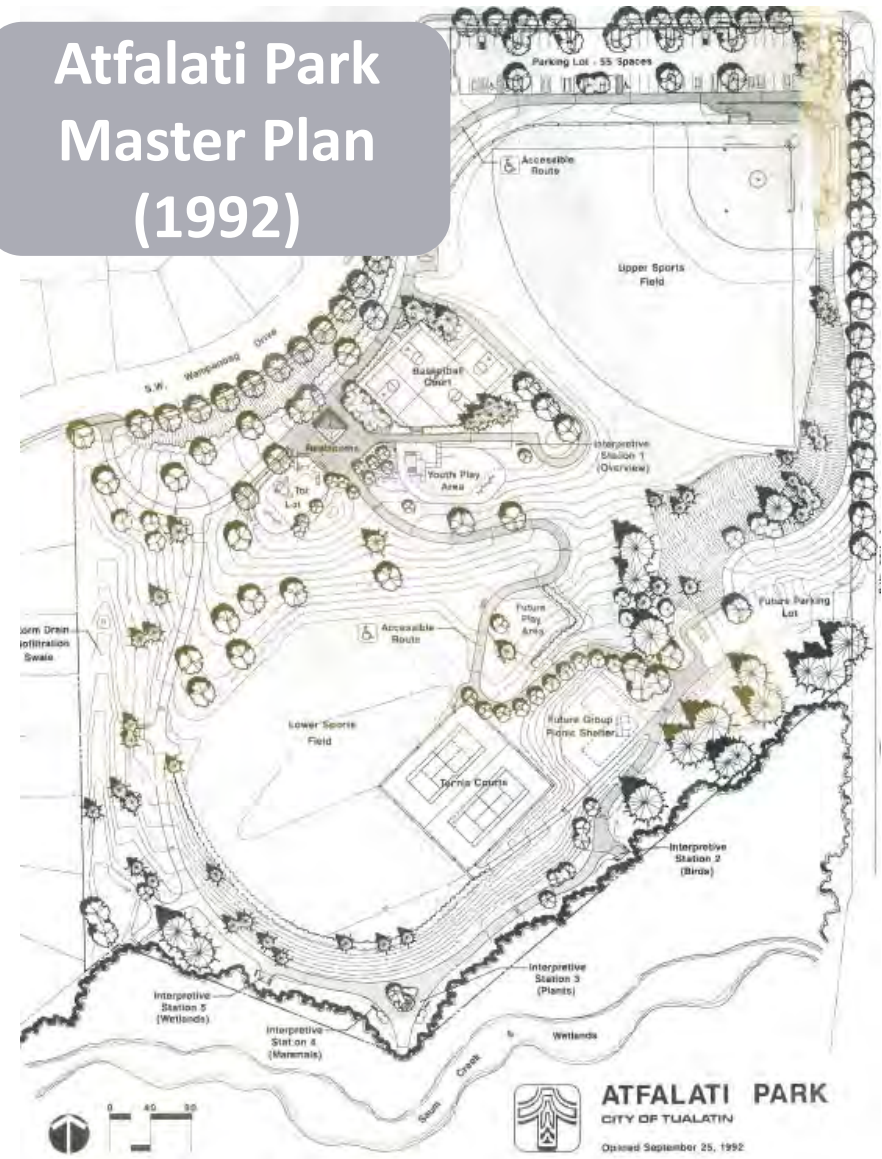


# Previous Park Master Plans

Jurgen Park Master Plan (1998)



Atfalati Park Master Plan (1992)



# Previous Natural Area Plans

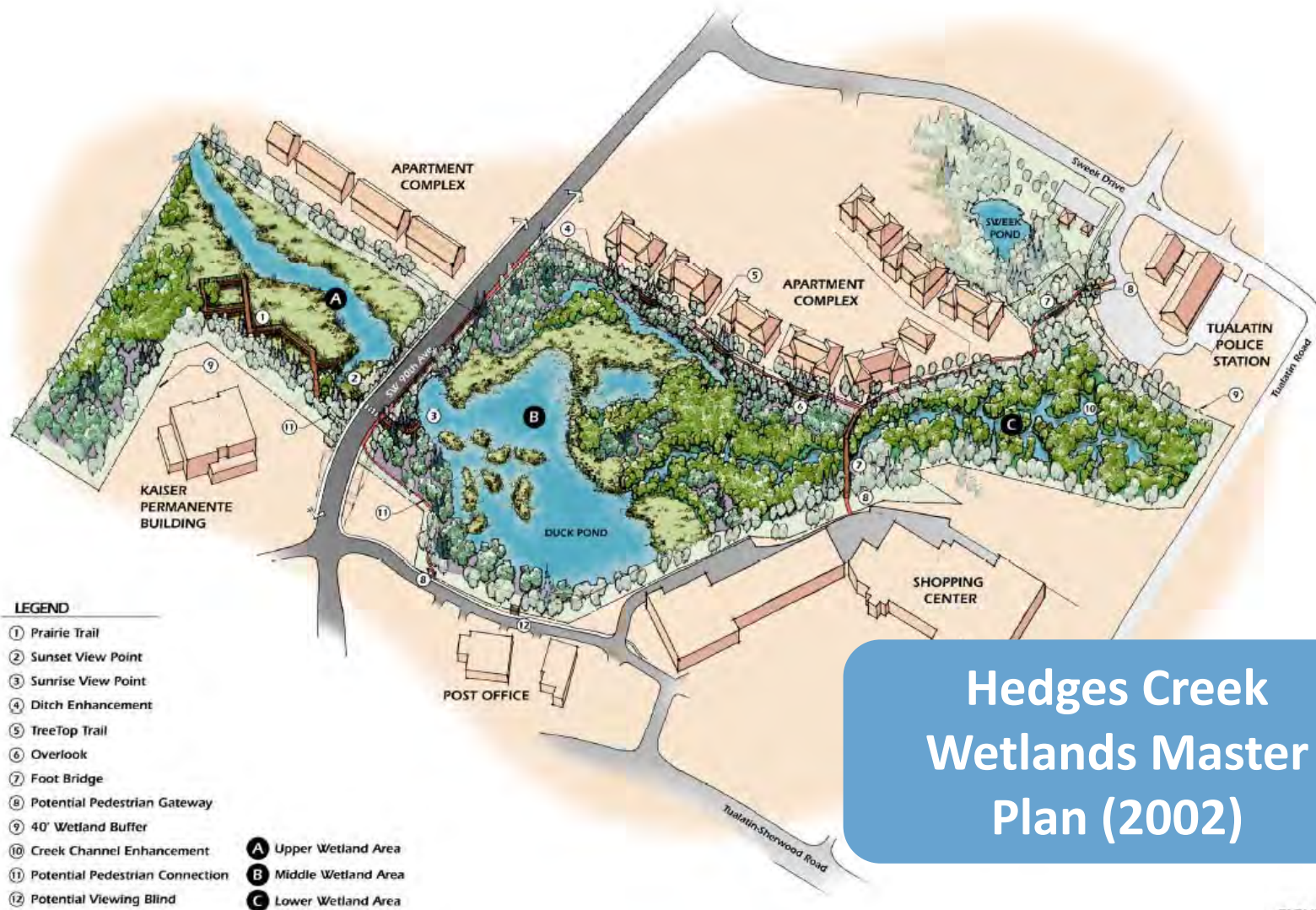


FIGURE 1-1



# Previous Greenway Plans



Tualatin River Greenway - Shared Use Pathway  
Preferred Alignment

Tualatin River  
Greenway (2015)

# Maintenance/Restoration Plans

## Implementation

The Plan is proposed to be implemented in phases. The first phase occurs during this fiscal year (FY96/97). The second phase is scheduled for FY 97/98 and the third phase for FY 98/99. The phasing plan is based on the appropriate methods of restoring woodlands and funding available. Priority items are scheduled for the first phase. The phasing plan matrix follows.

Item	Phase I	Phase II	Phase III
<b>Botanical Supplies</b>			
Trees	X	X	X
Seedlings	X		
Shrubs		X	X
Mulch	X	X	X
<b>Contract Services</b>			
Chipping debris	X		
Snags	X		
Pruning	X	X	X
Trail (safety work)	X		
Trail (restoration)	X		
Trail (new accessible)		X	
Vegetation management	X	X	X
Erosion control	X		
<b>Operating Materials</b>			
Cellular telephone	X		
Irrigation systems	X		
Hoses	X		
Buckets	X		
Signage repair	X		
Interpretive stations	X		
Benches		X	
Trash cans		X	
Refreshments for volunteers	X	X	X
Bird/bat houses	X		
Photographs	X		
Rule/ADA signs		X	
Shovels	X		
<b>Staff Wages</b>			
Watering and veg management	X	X	X
Overtime	X		

Little Wood Rose Nature  
Park Restoration Plan  
(1996)

A MAINTENANCE MANAGEMENT PLAN  
FOR THE CITY OF TUALATIN'S  
LAFKY PARK

by  
Paul Hennon  
Director, Parks & Recreation Department  
City of Tualatin

Lafky Park  
Maintenance Plan  
(1988)

A preliminary timetable for Phase 1 implementation is shown in Appendix H.

# Previous Annual Reports

## Tualatin Park Advisory Committee (TPARK)



2016  
Annual Report



## Juanita Pohl Center Advisory Committee 2015-16 Annual Report



- Tualatin Park Advisory Committee (TPARK)
- Juanita Pohl Center Advisory Committee
- Tualatin Library Advisory Committee (TLAC)
- Tualatin Youth Advisory Committee (YAC)
- Tualatin Arts Advisory Committee (TAAC)

# Community Vision



## Community Vision and Strategic Action Plan

Updated 2016

### **How We Live and Learn**

Arts, Culture, Education, Youth and Family Activities

### **How We Plan and Grow**

Growth, Housing and Town Center

### **How We Decide**

Governance, Leadership and Community Engagement

### **How We Care for One Another**

Health, Safety and Social Services

### **How We Connect with Nature**

Parks, Recreation and Natural Areas

### **How We Get Around**

Traffic, Transportation and Connectivity



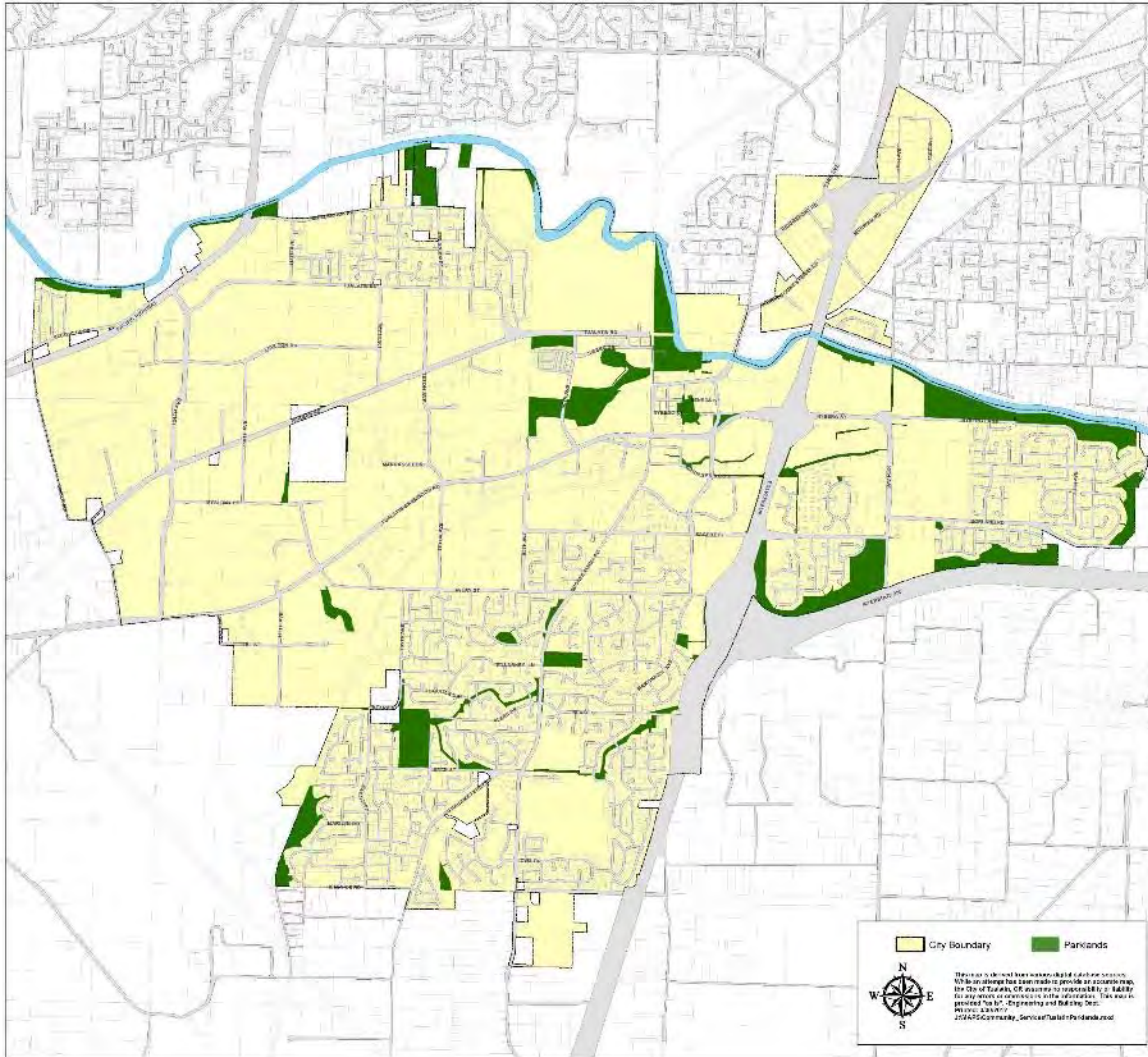
# City Council- 2030 Vision





# 2017-18 PARKS MASTER PLAN UPDATE

# Existing Park/Rec System



# Next Steps

- Inventory and mapping
- Park condition assessment
- Events, arts, programs and services overview
- System Development Charges review
- Existing Systems Summary
- Ongoing outreach





# PARKS AND RECREATION MASTER PLAN

## PROJECT ADVISORY COMMITTEE MEETING #1

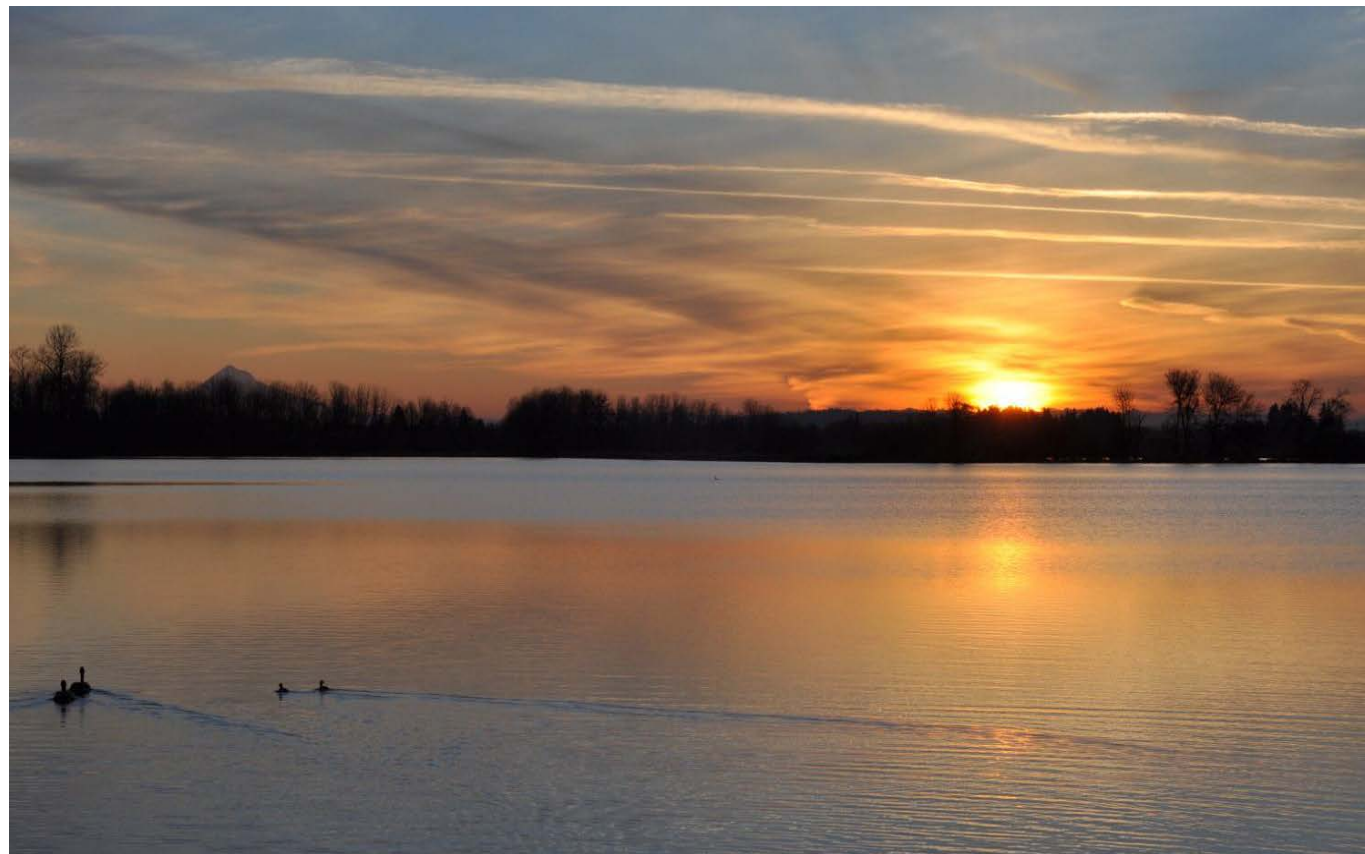
Tuesday, July 25<sup>th</sup> 2017 | 6:30 to 8:30 pm



# Pre-Proposal Release Meeting for the Tualatin Interceptor and Siphon Improvement Project, #6493

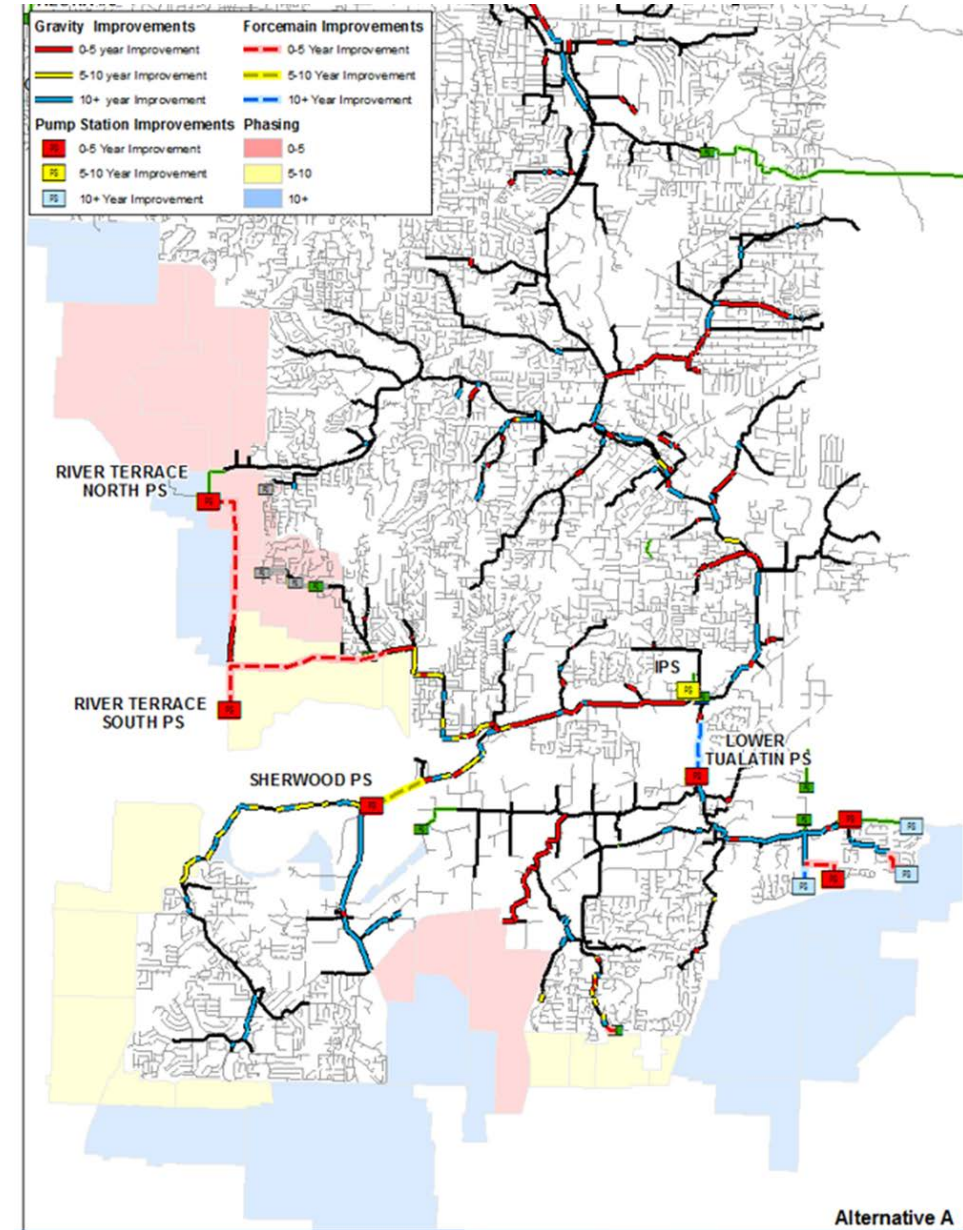
June 1, 2017

CleanWater  Services



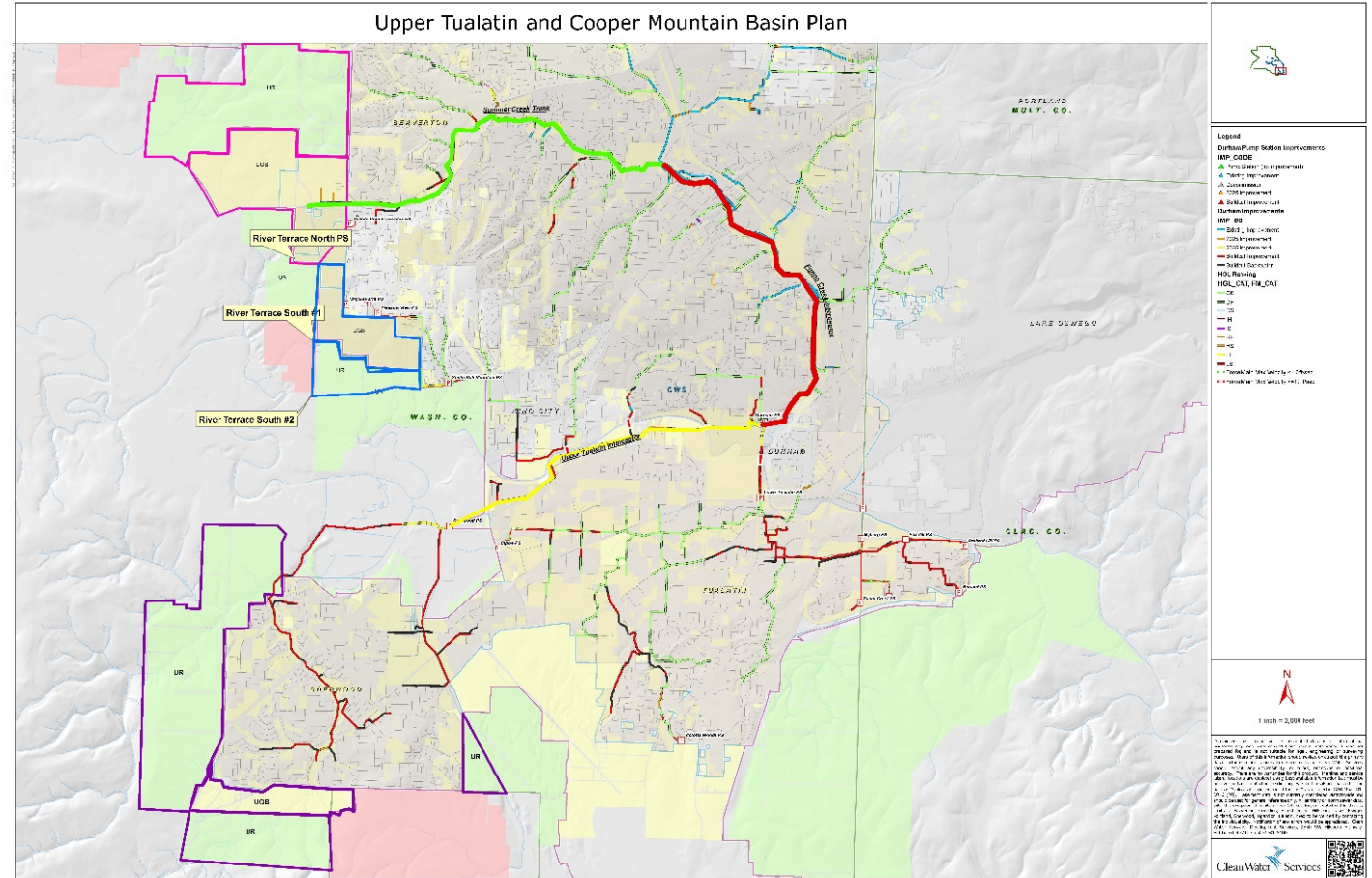
# Outline

- Background
- Description
- Goals
- Approach
- Schedule
- Q&A



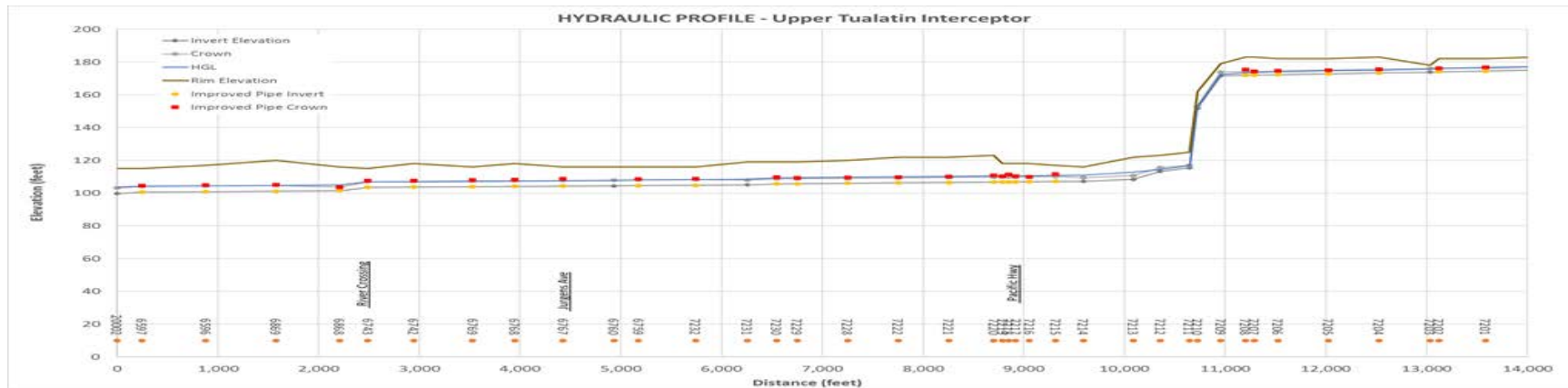
# Background

- Upper Tualatin Interceptor (UT) serves the cities of Tualatin, Tigard, King City, and Sherwood and flows into the Durham Wastewater Treatment Plant (DUWWTP).
- Constructed in 1985 and consists of approximately 15,000 linear feet of Reinforced Concrete pipe ranging in diameter from 27 to 42 inches.



# Background Cont.

- In the 2008 Master Plan update and the 2013 Model Calibration,
  - The UT was identified to be capacity deficient due to development during the five year sanitary sewer flow event at the projected 2025 development levels.
- In 2017, District completed a planning effort for the southwestern DUWWTP flow basin in order to determine the effects of growth from the subject development areas. The results of this effort yielded a concept plan to reroute flows from Cooper Mountain and River Terrace development areas into the UT.



# Project Goals

**Quality:** Design, permit and construct the sanitary infrastructure necessary to support the upstream growth and development while minimizing construction impacts to the environment and stakeholders in full compliance with federal, state and local regulations.

**Cost:** Cost-effective design and construction to comply with District's project budget.

**Schedule:** Achieve the scheduled completion date for design, construction and performance testing of the Project.

**Risk:** Achieve an optimal balance of risk allocation between the District and the Design-Builder.

**Safety:** Implement an effective safety program incorporating best industry practices for protection of District, the Owner's Advisor, Design-Build staff, and other associated parties as well as the Public throughout design, construction and continuing operations of the new infrastructure.



# Description

This project generally includes the following:

- Design, permitting, and construction of approximately 5,971 linear feet (lf) of 66 inch, 3,344 lf of 60 inch, 496 lf of 48 inch, 470 lf of trenchless 30 inch, and 545 lf of trenchless 21 inch diameter sanitary sewer interceptor.
- Installation of associated manholes, service lateral connections, mainline connections, siphon structures, surface restoration, and other associated appurtenances.
- Acceptance testing of manholes, structures, and sewer mainline.
- Special investigation as required for the design, permitting, and construction of said improvements.
- Obtainment of all permits as required by the scope of this project.



# Approach

The progressive design-build delivery method for the Project has been selected in order to allow the District to work in close collaboration with the Design-Builder to develop the Project's design to achieve the Project objectives and to obtain a mutually agreeable GMP delivery of the Project.

The Project is to be designed and constructed in two phases:

- Phase One: Prepare design to 60% complete, as defined in Attachment B (Scope of Design-Builder Services), and a guaranteed maximum price (GMP) proposal. Prepare and submit the documents necessary to obtain all permits and approvals for the project.
- Phase Two: Complete design, final permitting, construction, and post-construction tasks, including performance testing (if GMP is approved by the Owner in Phase One)





# Schedule

Description	Completion Date
Pre-RFP Project Meeting	1-Jun-17
Issue RFP	21-Jun-17
Proposer Notification of Intent to Attend Mandatory Confidential Meeting	6-Jul-17
District Notification of Mandatory Confidential Meeting Schedule	11-Jul-17
Mandatory Confidential Meetings	July 18 ~ 20 2017
Deadline for Questions	25-Jul-17
Issue Final Addenda	27-Jul-17
Proposal Submission Due Date	3-Aug-17
Interviews (if required)	8-Aug-17
Design-Builder Selection	10-Aug-17
Award of Design-Build Contract	22-Aug-17
Issue Notice-to-Proceed	23-Aug-17
Complete Phase 1: Study, Design, Investigation and Technical Exhibit Phase Services	30-Jan-18
Award of Phase 2: Design-Build Phase Services	18-Mar-18
Issue Notice-to-Proceed for Phase 2: Design-Build Phase Services	31-Mar-18
Substantial Completion-King City Siphon Improvements	28-Dec-18
Substantial Completion-UT Upgrade Upstream of King City Siphon	28-Dec-18
Substantial Completion-Cook Park Siphon Improvement	31-Dec-20
Substantial Completion of Entire Project	31-Dec-20
Final Completion of the Project	26-Jan-21



# Q & A



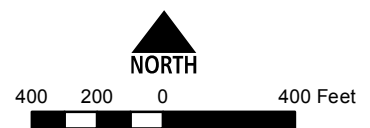


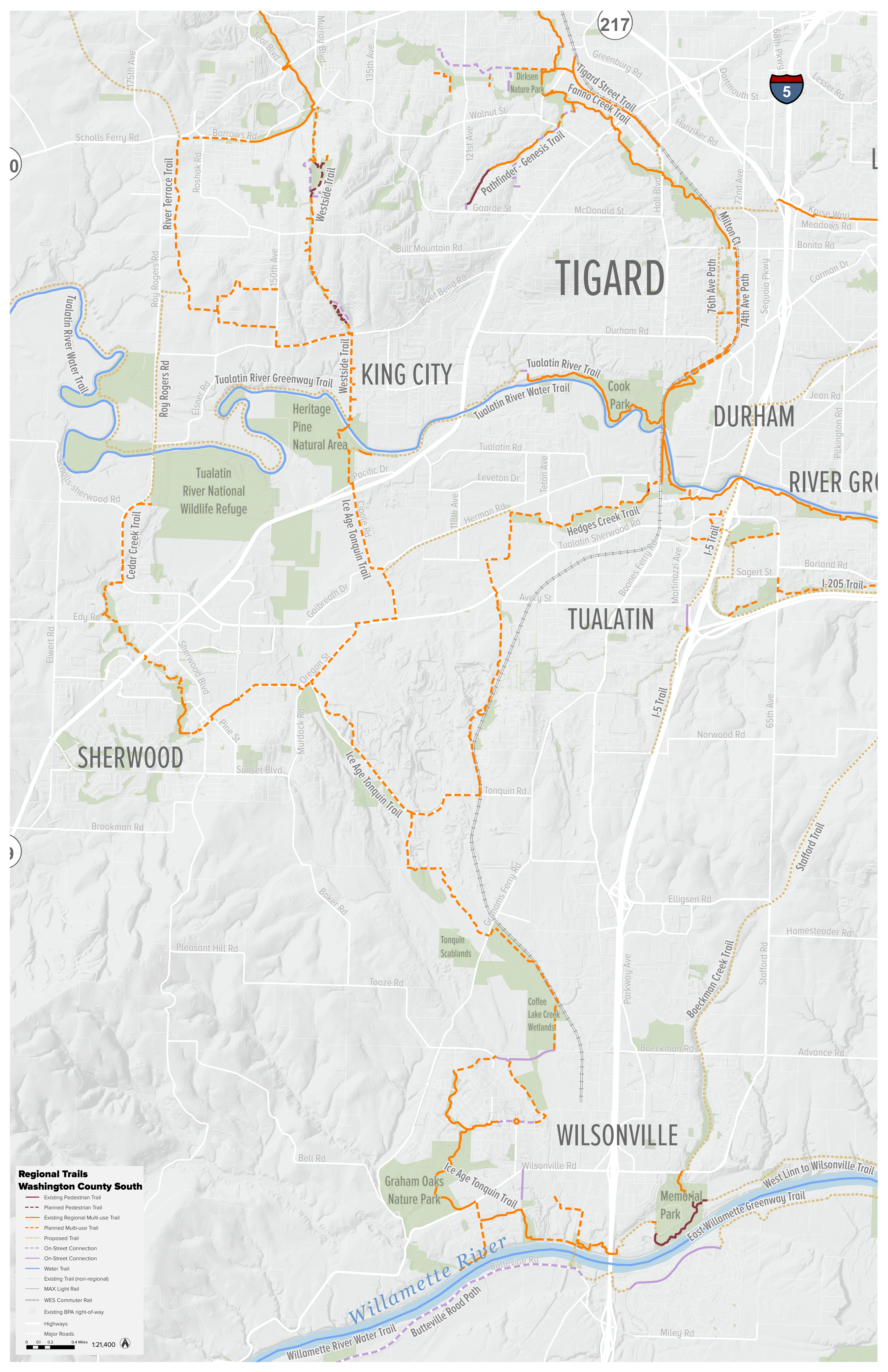
**STAFFORD BASIN TARGET AREA**

**Meyers property - 77.67 acres**

**Legend**

- Meyers property
- County lines
- Metro property
- Trail name





**Regional Trails**  
**Washington County South**

- Existing Pedestrian Trail
- - - Planned Pedestrian Trail
- Existing Regional Multi-use Trail
- - - Planned Multi-use Trail
- · - · - Proposed Trail
- On-Street Connection
- - - On-Street Connection
- Water Trail
- Existing Trail (non-regional)
- - - MAX Light Rail
- · - · - WES Commuter Rail
- · - · - Existing BPA right-of-way
- Highways
- Major Roads

0 0.1 0.2 0.4 Miles 1:21,400

**TIGARD**

**KING CITY**

**DURHAM**

**RIVER GROVE**

**TUALATIN**

**SHERWOOD**

**WILSONVILLE**

**Willamette River**

0

217

5

0

0 0.1 0.2 0.4 Miles 1:21,400