



## MEETING NOTICE

**TUALATIN PARK ADVISORY COMMITTEE**  
October 10, 2017 - 6:00 PM

**COMMUNITY SERVICES ADMINISTRATION OFFICE**  
Tualatin Community Park  
8515 SW Tualatin Road

---

**A. CALL TO ORDER**

1. Roll Call

**B. APPROVAL OF MINUTES**

1. August 8, 2017

**C. ANNOUNCEMENTS**

1. Chair
2. Staff
3. Public

**D. OLD BUSINESS**

1. Parks and Recreation Master Plan Update
  - a. Project Advisory Committee Meeting #2
  - b. Community Engagement and Outreach
  - c. Next Steps
2. Trail Projects Update
3. Pohl Center Staffing
4. Crawfish Festival Report

**E. NEW BUSINESS**

1. Summer Program Report
2. Pumpkin Regatta Event
3. Transient Lodging Taxes

**F. FUTURE AGENDA ITEMS**

**G. COMMUNICATIONS FROM COMMITTEE MEMBERS**

**H. ADJOURNMENT**



# PARKS & RECREATION MASTER PLAN

## Project Advisory Committee Meeting # 2

Date: Tuesday, 9/12/17

Time: 6:30 - 8:30 pm

Location: Tualatin Public Library Community Room, 18878 SW Martinazzi Avenue

### *Agenda*

6:30-6:35 pm	Welcome and Introductions
6:35-6:40 pm	Public Comment
6:40-6:55 pm	Project Announcements and PAC Business <ul style="list-style-type: none"><li>• Election of Chair and Vice Chair</li><li>• Approval of Meeting Minutes</li><li>• Public Outreach Opportunities</li></ul>
6:55-7:35 pm	Presentation: Existing Systems and Services Overview <ul style="list-style-type: none"><li>• Parks, Recreation Facilities, Programs</li><li>• Q&amp;A</li></ul>
7:35-7:45 pm	Community Needs Activity
7:45-8:20 pm	Discussion: Preliminary Needs Assessment Ideas <ul style="list-style-type: none"><li>• Parkland</li><li>• Recreation facilities</li><li>• Trails</li><li>• Natural areas, wetlands, natural resources</li></ul>
8:20-8:30 pm	Close/Next Steps

### *Handouts*

Park and Facility Inventory  
Park System Map

## **City of Tualatin**

### **Parks & Recreation Master Plan Update**

#### **Project Advisory Committee Officers**

##### Committee Chair Nominations

Dear Tualatin Park Project Advisory Committee,

I like to express my interest in serving as the chair of the Tualatin Park Project Advisory Committee. As the vice-chair of Tualatin Parks Advisory Committee (TPark) for the last five years, updating the Master Plan has been the top of our priority list. My service on TPark has also given me an in-depth awareness of the specific Parks and Recreation needs in Tualatin. Having read the current Master Plan, I have a deep appreciation for the insightfulness that went into this document and our Committee's obligation to put our best efforts into planning for the future parks and recreation needs for our city.

In addition to TPark, I recently spent five years as a board member, treasurer and race director for the Oregon Road Runners Club. There, I learned the effectiveness of allowing a group of individuals to express their varying opinions to ultimately find the best outcome for a single purpose.

Your consideration to allow me to serve as the chair of our committee is greatly appreciated!

Sincerely,

Valerie Pratt

##### Committee Vice-Chair Nominations



# PARKS & RECREATION MASTER PLAN

## Project Advisory Committee Meeting #1 Summary

Date: Tuesday, 7/25/17

Time: 6:30 - 8:30 pm

Location: Tualatin Public Library

**Attendance:** Graehm Alberty, Diane Bonica, Kay Dix, Andrew Evans, Anthony Gallegos, Cyndy Hillier, Candice Kelly, Robert Knight, Dana Paulino, Valerie Pratt, Christen Sacco, Ted Saedi, Maureen Sevigny

**Councilor:** Jeff DeHaan, Paul Morrison

**Staff:** Paul Hennon, Rich Mueller, Sou Souvanny, Tom Steiger, Jerianne Thompson

**Consultant:** Cindy Mendoza, MIG

**Public:** Joe Lipscomb, Sharon Noell, Bev Phelps, George Wiggins

**Absent:** Tom Gile, Krista Nanton, Anthony Warren, Dennis Wells

---

### Welcome and Introductions

Rich Mueller welcomed and thanked the Committee and the public for attending the first meeting of the Project Advisory Committee Meeting. Rich then introduced Sherilyn Lombos, City of Tualatin City Manager. City Manager Lombos welcomed the group. She expressed her appreciation to committee members for taking time out of their schedules to volunteer on the committee for this important project. Sherilyn emphasized the importance for collaboration among all participants in the planning process in order to define a clear and reflective vision and purpose for the parks and recreation master plan.

Rich Mueller then introduced Cindy Mendoza, the project manager with the consultant group, MIG. Members of the Committee and staff went go around the room and provided a brief introduction on who they are and the organizations they are involved in or represent.

### Public Comment

There were four members of the public present. Each represented a range of interests, including the older adult demographic, program or facility users and observers.

### Project Overview & Planning Context

Cindy Mendoza presented a general overview of the planning process and the steps taken to reach a final plan. The primary purpose of each phase included, but is not limited to, understanding the current conditions of the parks and recreation facilities, programs and services, understanding the needs of the community and the opportunities to improve or enhance. The final master plan document will be an



accumulation of the facilities assessment and public input presented as goals and recommendations. A review of the funding sources available to support implementation will also be a part of the plan.

Cindy Mendoza distributed a document titled PAC Roles/Responsibilities and reviewed the role of the Project Advisory Committee and the meeting dates. The Community Engagement & Outreach Responsibilities document listing an extensive public involvement process was distributed and reviewed by Cindy Mendoza. Rich Mueller then asked committee members who wished to volunteer at a Pop Up Activity or Focus Group to sign up on a sheet sent around the room.

Cindy Mendoza presented a PowerPoint on the project planning context with an overview of Existing Systems and Services of Parks, Recreation Facilities and Programs. This presentation included a project overview, master plan process, planning process, project timeline, community outreach, city project groups, PAC role, planning context, location in region, demographics, population growth, population characteristics, population attributes, past planning efforts, comprehensive plan & code, 1983 parks master plan, protected areas, pedestrian/bike paths, trails planning, park site master plans, natural areas plan, greenway plans, maintenance/restoration plans, previous annual reports, community vision, city council 2030 vision, existing park/recreation system, and next steps.

The presentation and other documents can be found on the project page via the City of Tualatin's website.

### **Pop-Up Activity**

Following the presentation Cindy Mendoza explained the pop-up event and invited committee members and guests to participate in the activity. The results of which are below:

#### **How important are parks, recreation programs, events and trails to Tualatin's quality of life?**

Moderately important (2)  
Extremely important (13)

#### **What is the most important thing the City could do to improve Tualatin's parks, recreation programs, facilities and trails system?**

Provide more parks and sports fields (6)  
Protect or restore natural areas (2)  
Offer more or different recreation programs (5)  
Repair or replace worn or older park features (no responses recorded)  
Add a greater variety of recreation facilities in parks (8)  
Build more trails / connect the trail system (7)  
Build a multi-purpose recreation center (6)  
Remodel or refresh existing recreation buildings (1)  
Other: Open up river

#### **What activities would you like to see more of in Tualatin?**

Walking/biking (8)  
Fitness, wellness and exercise (10)  
Indoor recreation programming (5)  
Large community events (2)  
River activities (3)  
Playing in interactive, unique play areas (4)  
Social gatherings (3)

Wildlife viewing and interpreting nature (3)  
Making or admiring art (1)  
Adventure/challenge activities (no responses recorded)  
Sports (1)  
Library programs and activities (2)  
After school and summer camps (4)  
Other: Water play, splash pads

**How often do you visit or use the following areas in Tualatin?**

Frequently: Small parks in my neighborhood (3)  
Frequently: Large neighborhood parks (7)  
Frequently: Community Parks (14)  
Frequently: Tualatin Commons (8)  
Frequently: Trails and Natural Areas (8)  
Frequently: Tualatin Public Library (7)  
Frequently: Juanita Pohl Center, Community Center or Heritage Center (7)  
Sometimes: Small parks in my neighborhood (3)  
Sometimes: Large neighborhood parks (3)  
Sometimes: Community Parks (2)  
Sometimes: Tualatin Commons (7)  
Sometimes: Trails and Natural Areas (3)  
Sometimes: Tualatin Public Library (3)  
Sometimes: Juanita Pohl Center, Community Center or Heritage Center (3)  
Rarely: Small parks in my neighborhood (3)  
Rarely: Large neighborhood parks (1)  
Rarely: Community Parks (no responses recorded)  
Rarely: Tualatin Commons (no responses recorded)  
Rarely: Trails and Natural Areas (no responses recorded)  
Rarely: Tualatin Public Library (4)  
Rarely: Juanita Pohl Center, Van Raden Community Center or Heritage Center (2)  
Never: Small parks in my neighborhood (2)  
Never: Large neighborhood parks (2)  
Never: Community Parks (no responses recorded)  
Never: Tualatin Commons (no responses recorded)  
Never: Trails and Natural Areas (no responses recorded)  
Never: Tualatin Public Library (no responses recorded)  
Never: Juanita Pohl Center, Van Raden Community Center or Heritage Center (2)

**Discussion: Parks, Recreation, Events, Arts, Greenways, Natural Areas**

For the remainder of the time, Cindy Mendoza led the following discussion

**What is working well?**

- The community uses the parks and facilities
- Ties to cultural identity and uniqueness with interpretives and historic elements
- Parks and trails are green and attractive
- Parks and trails are well maintained
- Multiple opportunities to be active in parks involvement (plantings)
- Users feel safe
- There is a diversity of users
- Trails that promote walking and biking

- Park elements blend well with the surrounding area
- Clean, vibrant, open and big
- Fun activities
- Accessible and connected
- Parks are in proximity to the community
- City and parks department work well together
- City Council have historically been supportive of land acquisitions for parks and trails
- Accessibility of parks by bike
- Dog park
- The integration of man-made elements and water features
- Collaboration and coordination between volunteers and staff coordination for programs of all ages
- Collaboration and engagement with high school in natural significant environmental areas

### **What are the Opportunities?**

#### **Comprehensive Recreation Programming**

- Connect kids with outdoor education using the high school students and wetlands project as an example
- Improve recreation programs and activities for people of all ages
- Partner with the schools to improve accessibility
- Have dedicated places for specific age groups and activities (for example: pickle ball courts and splash pads)
- Incorporate outdoor exercise equipment to encourage health and fitness in community – Possible public-private partnership service groups and businesses to lessen the financial burden on community
- Land acquisitions that will connect areas that are currently not connected to an existing trail or park
- Provide access to the river for all areas of the City, in particular the areas where there is not currently an existing connection to a trail

#### **Multi-Purpose Indoor Recreation Facility**

- Build an indoor multi-purpose recreation field and explore various designs and funding opportunities

#### **Education and Information**

- Education / informational signs for park users – signs to outline park etiquette, safety and dangers for all ages.
- Leverage different relationships and develop a communication/outreach tools for a strategy to get information out about Tualatin's parks and programs
- Parks app for cell phone users

### **What needs more attention or improvements?**

#### **Accessibility & Connectivity**

- Pedestrian facilities like sidewalks and bike lanes into the southwestern area of the City are not completed

- No connection and a lack of facilities from the Pony Ridge area to the other areas of the City
- Trails are not consistently accessible by wheel chair during all seasons
- Better removal of hazards
- Better accessibility to school fields
- Connecting Tualatin to other communities to the south (Canby, Wilsonville) – Define community assets
- More direct river access points and outlooks with interpretives

### **Dedicated Recreation Spaces**

- More recreation spaces for sports to manage high competition for field rentals and maintenance schedules (turf fields, softball fields)
- Indoor recreation facilities with a multi-purpose designed

### **Communication**

- Communications / marketing strategy, specifically targeted to parks and recreation that is consistent across the departments

### **Development & Design Standards**

- Design standards for trails to consider bench standards, lighting, width of trails (high density versus low density), etc.
- Consider future accessibility standards (current standards versus what is actually being built)
- Standards for distance between park and residences
- Improve spacing of sidewalks for better access (improving in terms of access)

### **What challenges should this plan address?**

- Comprehensively explore partnerships with private businesses and organizations for funding support
- Land Acquisitions of additional lands
- Build in flexibility to address the long term nature of the plan
- Regional change and growth rate of the City - take advantage of the benefits of the surroundings
- Prioritization
- Traffic safety
- Vision needs to be in-line with funding sources
- Both indoor and outdoor programs and activities for all demographics and ages
- Ensure entire population has walking access or biking to parks
- Connectivity and accessibility in a better way
- Management plan to balance residential uses and outside users
- Opportunities to learn about nutrition and food systems (positive and negative of choices regarding food)
- Learn from other communities through site visits

### **Close/Next Steps**

Rich Mueller announced that the advisory committee will elect a Chair and Vice-chair the next meeting. Rich thanked members for attending and providing valuable input and ideas. The next PAC meeting will take place on September 12<sup>th</sup> at 6:30 pm at the Tualatin Public Library Community Room.



# PARKS AND RECREATION MASTER PLAN

## PROJECT ADVISORY COMMITTEE MEETING #2

Tuesday, September 12, 2017 | 6:30 to 8:30 pm



# PAC Meeting Agenda

- I. Welcome and Introductions
- II. Public Comment
- III. Project Announcements and PAC Business
- IV. Presentation: Existing Systems and Services Overview
- V. Activity: Community Needs
- VI. Discussion: Preliminary Needs Assessment
- VII. Close/ Next Steps





**TUALATIN**  
Accessible, Inclusive & Vibrant  
**Parks and Recreation**

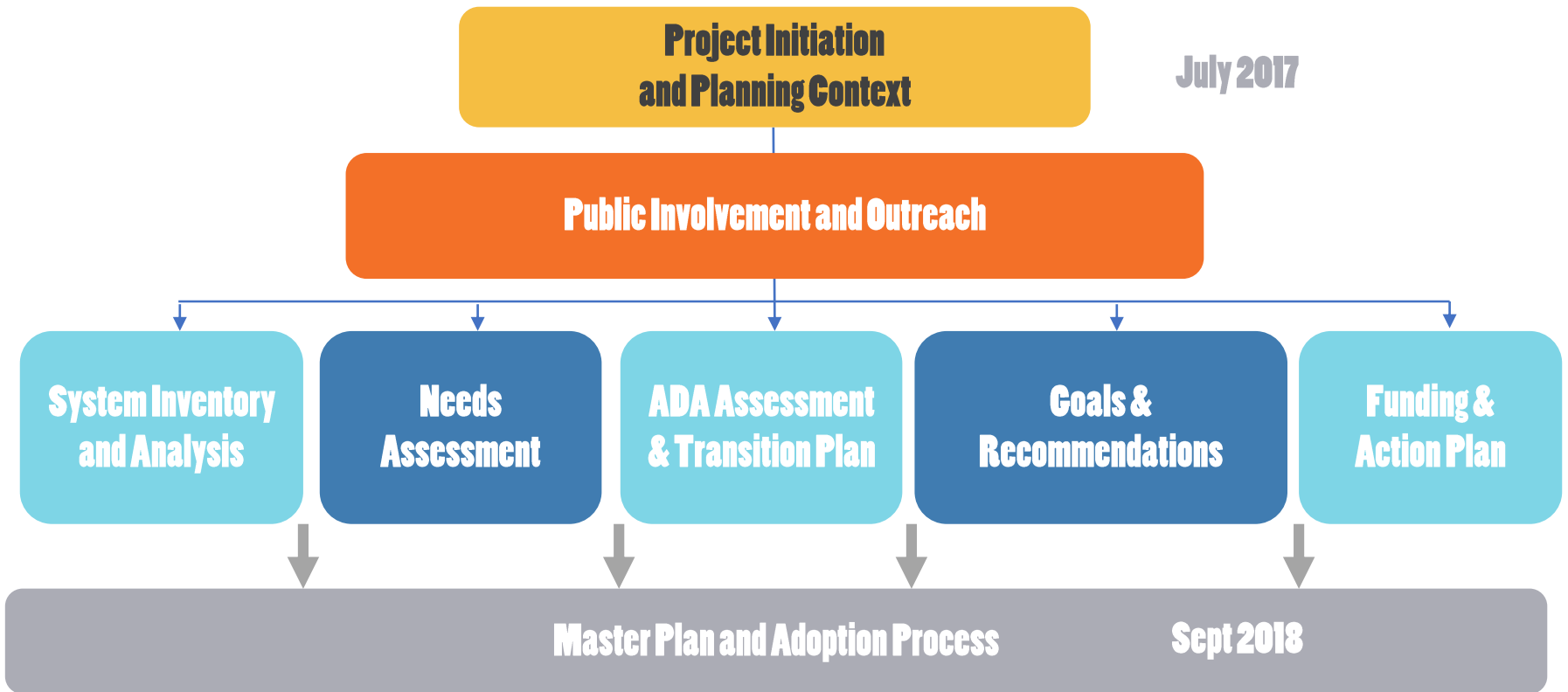
**PROJECT ANNOUNCEMENTS  
AND PAC BUSINESS**



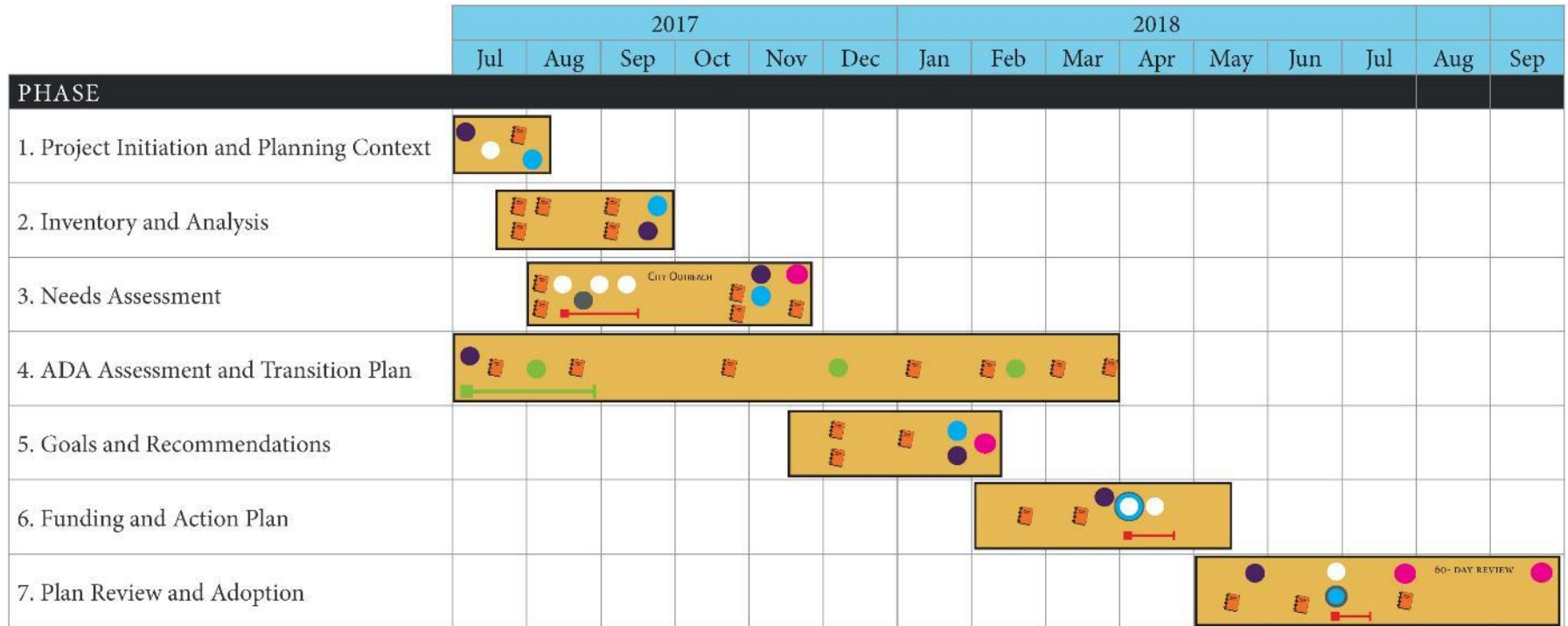
# Project Announcements and PAC Business

- Election of Chair and Vice Chair
- Approval of Meeting Minutes
- Public Outreach Opportunities

# Planning Process



# Project Timeline



- Project Advisory Committee (PAC) Meetings
- Project Management Team (PMT) Meetings
- Council Updates
- ADA Meetings
- Art Advisory Committee Meeting (TAAC)

- Public Engagement/ Meetings/Activities
- Online Questionnaire

Major Deliverable

ADA Surveying

# Community Outreach

- Stakeholder Interviews
- Online Questionnaire
- Focus Groups
- Hispanic/Latino Outreach and Meetings
- Pop Up Activities
- Park and Greenway Walks
- Community Workshop and Online Forum
- Draft Plan Review Forum





**TUALATIN**

Accessible, Inclusive & Vibrant  
**Parks and Recreation**

**PRESENTATION: EXISTING SYSTEMS  
AND SERVICES OVERVIEW**



# Systems & Services

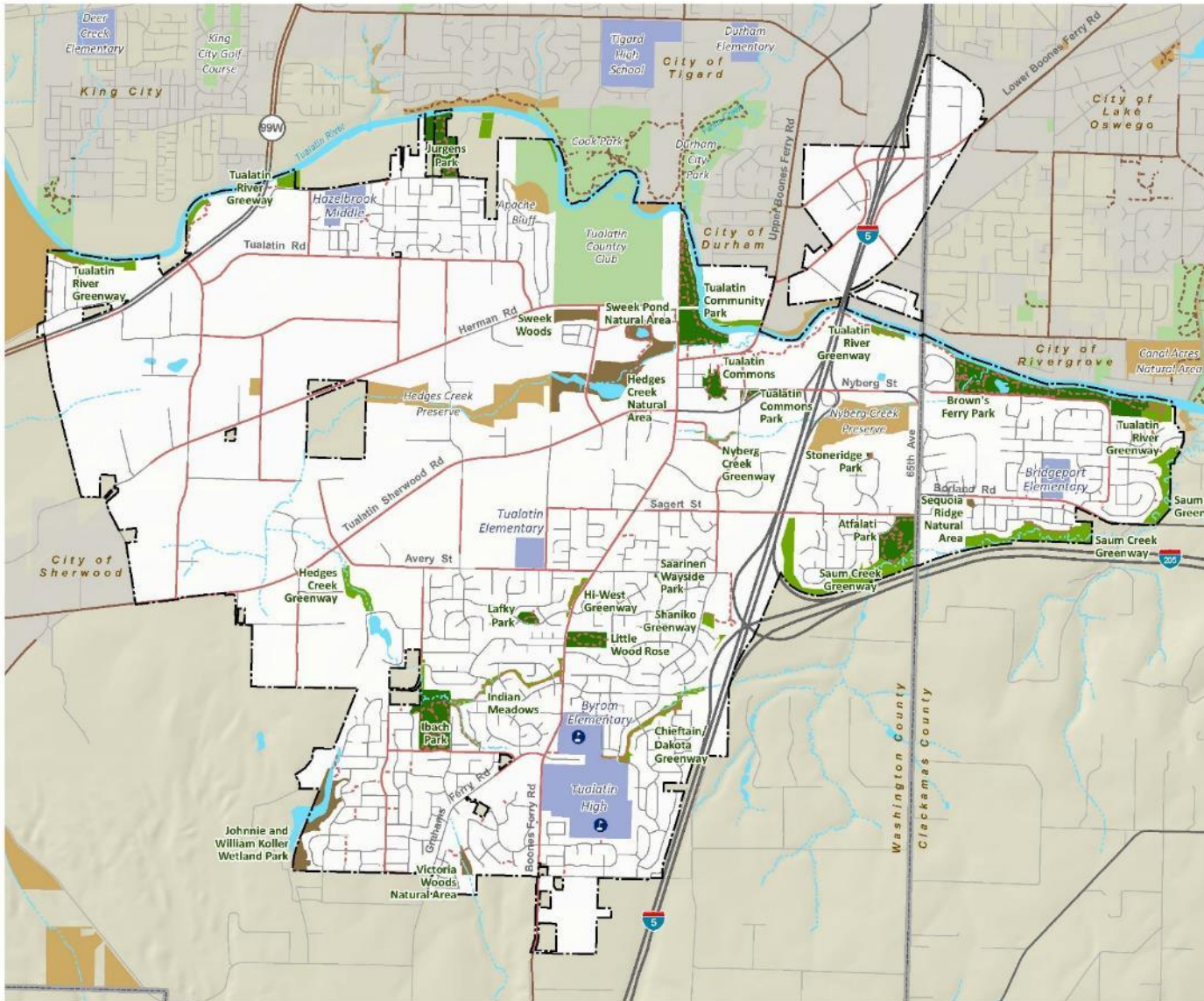
- Parks and Open Space (Land)
- Recreation Facilities
- Programs and Events
- Park Maintenance, Condition and Access

# Systems & Services

- **Parks and Open Space (Land)**
  - Recreation Facilities
  - Programs and Events
  - Park Maintenance, Condition and Access



# Park Distribution



**Map 1:  
Existing Parks and Recreation  
Areas (Draft)**

- Tualatin Park and Recreation Facilities**
- Parks
  - Greenways
  - Natural Areas
  - School Joint-Use Facilities
- Other Park and Natural Areas**
- Other Developed Parks and Recreation Areas
  - Other Greenways and Natural Areas
  - Tigard-Tualatin District Schools
- Bike Routes and Trails**
- Tualatin Park Trails
  - Tualatin Bike Routes
  - Other Trails
  - Other Bike Routes
- Base Map Features**
- Tualatin City Boundary
  - Other City Boundaries
  - County Boundary
  - Freeways/Highways
  - Major Arterials
  - Local Streets
  - Streams
  - Rivers and Water Bodies

# Park & Facility Inventory

Table: Tualatin Parks, Greenways and Natural Areas Inventory - Draft

Parks	Total Acres	Type	Outdoor Recreation					Athletic Facilities				Trails/ Natural Features				Amenities				Specialized			Notes							
			Play Features	Flexible Use Lawn Areas	Horseshoe/Pits	Skate Park	Water Play/Spray Feature	Rectangular Fields	Ball Fields	Rocketball Courts	Tennis Courts	Volleyball Court	Natural Areas & Wildlife Viewing	Trails	River Access	Interpretive Features	Barbeques	Dog Park	Covered Picnic Shelters	Restrooms	Picnic Tables	Art		Floating Dock/Boat Ramp (non-motorized)	Kayak & Canoe Rentals	Special Use Buildings				
<b>Tualatin Community Park</b>	27.11	CP	1	*	2	1	1w	2, 1 <sup>1</sup>	2, 1 <sup>1</sup>	2 <sup>5</sup>	2 <sup>2</sup>		*	*	*	*	3	1	4 <sup>h</sup>	1	*	*	BR		4	Community Services Administration Offices, Juanita Pohl Center, Lafky House, Van Raden Community Center, Motorized boat launch, Pickleball overlay on tennis courts, Pedestrian bridge				
<b>Brown's Ferry Park</b>	43.21	CP											*	*	*	*							FD	*	2	Community Center, Willowbrook Arts Camp: June-Aug				
<b>Ibach Park</b>	20.08	LNP	2	*			1w	2	1	1	2		*	*	*	*			2	1	*	*				Teen play equipment				
<b>Atfalati Park</b>	13.27	LNP	2	*				1	1	1	2		*	*	*	*				1	*									
<b>Jurgens Park</b>	15.59	LNP	2	*			1w	1	1	1	2		*	*	*	*			1	1	*	*	FD			Raised garden beds				
<b>Lafky Park</b>	2.00	SNP	1	*						1				*																
<b>Stoneridge Park</b>	0.23	SNP	1	*										*																
<b>Tualatin Commons</b>	4.83	SU		*			1s							*					1	*	*						Crawfish fountain splash pad, Spray park			
<b>Tualatin Commons Park</b>	0.64	SU		*										*																
<b>Saarinen Wayside Park</b>	0.06	SU											*																	
<b>Little Wood Rose</b>	6.55	NP											*	*																
<b>Total</b>	133.6		9	8	2	1	4	7	6	6	8	0	7	5	3	7	3	1	7	6	8	6	3	1	6	Total includes 15 acres of greenways which are located within parks				
<b>Greenways</b>																														
<b>Chieftain/Dakota</b>	6.14	G											*	*														3525 ft trail		
<b>Hedges Creek</b>	11.66	G												*														3795 ft trail		
<b>Helenius</b>	0.43	G																										250 ft trail		
<b>Hi-West Estates</b>	1.59	G											*															935 ft trail		
<b>Indian Meadows</b>	3.82	G											*															1660 ft trail		
<b>Nyberg Creek</b>	2.76	G											*															750 ft trail		
<b>Nyberg Creek (South)</b>	2.3	G											*															1000 ft trail		
<b>Saum Creek</b>	54.22	G											*															9435 ft trail		
<b>Shaniko</b>	3.3	G											*	*														2284 ft trail		
<b>Tualatin River</b>	29.56	G											*	*									BR				20721 ft trail, Boat ramp at 99W			
<b>Total</b>	115.8		0	0	0	0	0	0	0	0	0	0	6	9	0	3	0	0	0	0	0	0	1	1						
<b>Natural Areas</b>																														
<b>Hedges Creek Natural Area</b>	29.06	NA											*	*																
<b>Hervin Grove Natural Area</b>	0.29	NA											*																	
<b>Johnnie and William Kolier Wetland Park</b>	15.32	NA											*																	
<b>Sweek Woods Natural Area</b>	5.03	NA											*																	
<b>Sweek Ponds Natural Area</b>	4.68	NA											*	*	*					*					1		Tualatin Heritage Center			
<b>Sequoia Ridge Natural Area</b>	0.65	NA											*	*																
<b>Victoria Woods Natural Area</b>	2.22	NA											*	*																
<b>Total</b>	57.3		0	0	0	0	0	0	0	0	0	0	6	4	0	1	0	0	0	0	0	0	0	0	0	0	1			
<b>School Joint-Use Facilities</b>																														
<b>Tualatin High School Sports Field</b>	0	JU						1																					Leonard Pohl Field	
<b>TuHS Byrom Elementary Cross County Trail</b>	0	JU											*																	
<b>Total</b>	0		0	0	0	0	0	1	0	0	0	0	0	1	0	0	0	0	0	0	0	0	0	0	0	0	0			
<b>Shared Use Paths</b>																														
<b>TBD</b>	0																													
<b>TBD</b>	0																													
<b>Total</b>	0		0	0	0	0	0	0	0	0	0	0	0	0	0	0	0	0	0	0	0	0	0	0	0	0	0			
<b>Grand Total</b>	306.6		9	8	2	1	4	8	6	6	8	0	19	19	3	11	3	1	7	6	9	7	4	1	7					

CP- Community Park, LNP- Large Neighborhood Park, SNP- Small Neighborhood Park, SU- Special Use, NP- Natural Park, JU- Joint Use, G- Greenway, NA-Natural Area  
R- Reserveable, L- Lighted, W- Low volume water interpretive, S- Splash Pad or Spray Feature, BR- Boat Ramp, FD- Fishing dock

Revised 8/30/17 [Trail data are incomplete, but included where available]

# Park Acreage by Park Type

	Total Acres
<b>Parks</b>	
Tualatin Community Park	27.11
Brown's Ferry Park	43.21
Ibach Park	20.08
Atfalati Park	13.27
Jurgens Park	15.59
Lafky Park	2.00
Stoneridge Park	0.23
Tualatin Commons	4.83
Tualatin Commons Park	0.64
Saarinen Wayside Park	0.06
Little Wood Rose	6.55
<b>Total</b>	<b>133.6</b>
<b>Greenways</b>	
Chieftain/Dakota	6.14
Hedges Creek	11.66
Helenius	0.43
Hi-West Estates	1.59
Indian Meadows	3.82
Nyberg Creek	2.76
Nyberg Creek (South)	2.3
Saum Creek	54.22
Shaniko	3.3
Tualatin River	29.56
<b>Total</b>	<b>115.8</b>

<b>Natural Areas</b>	
Hedges Creek Natural Area	29.06
Hervin Grove Natural Area	0.29
Johnnie and William Koller Wetland Park	15.32
Sweek Woods Natural Area	5.03
Sweek Ponds Natural Area	4.68
Sequoia Ridge Natural Area	0.65
Victoria Woods Natural Area	2.22
<b>Total</b>	<b>57.3</b>
<b>School Joint-Use Facilities</b>	
Tualatin High School Sports Field	0
TuHS-Byrom Elementary Cross County Trail	0
<b>Total</b>	<b>0</b>
<b>Shared Use Paths</b>	
TBD	0
TBD	0
<b>Total</b>	<b>0</b>
<b>Grand Total</b>	<b>306.6</b>



# Land Classifications

- Parks
- Greenways
- Natural Areas
- School Joint-Use Facilities
- Shared Use Paths

# Parks

- Parks are City-owned open space designed to support recreation. The City has 11 parks, ranging from .06 to 43.2 acres in size. The sites collectively provide indoor and outdoor recreation facilities and a variety of amenities to support park use.



# Parks by Type

- Parks can be classified by the roles they play or functions they provide:
  - CP: Community Parks (2)
  - LNP: Large Neighborhood Park (3)
  - SNP: Small Neighborhood Park (2)
  - SU: Special Use (3)
  - NP: Natural Park (1)



# Park Function

Type of Park	Definition	Size	Park Sites
<b>Community Park</b>	Large parks that provide a variety of recreation opportunities for the entire community. Parks typically support large group gatherings, protect natural resources and include specialized facilities, such as community centers, docks and boat ramps.	27 to 44 acres	Tualatin Community Park, Brown's Ferry Park
<b>Large Neighborhood Park</b>	Mid-sized parks accessible to pedestrians, bicyclists and cars that support sports, recreation, picnicking and play opportunities for surrounding neighborhoods.	13 to 20 acres	Ibach Park, Atfalati Park, Jurgens Park
<b>Small Neighborhood Park</b>	Small parks located within biking and walking distance that provide gathering and play space for nearby neighbors.	0.2 to 2 acres	Lafky Park, Stoneridge Park
<b>Special Use Park</b>	Parks, recreation facilities, or sites designed around a singular purpose, such as plazas, historic properties, waysides, sports complexes, etc.	0.6 to 5 acres	Tualatin Commons, Tualatin Commons Park, Saarinen Wayside Park
<b>Nature Park</b>	Natural open space designed to provide access to nature.	6.5 acres	Little Wood Rose



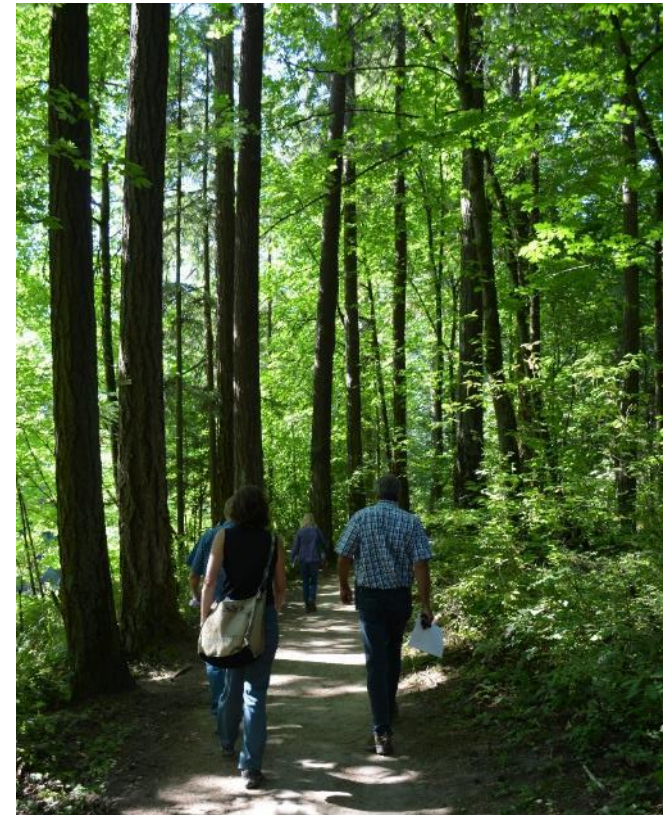
# Greenways

- Greenways are protected open space and trail corridors maintained for conservation, recreation, and non-motorized transportation. They range from the 750-foot (0.4 acre) Helenius Greenway to the almost 4-mile (3.4 acre) Tualatin River Greenway



# Natural Areas

- Natural Areas are mostly undeveloped areas managed to protect natural resources. These ranging from the 0.3-acre Herwin Grove Natural Area to the 29-acre Hedges Creek Natural Area





# School Joint Use Facilities

- Through a joint use agreement, the City ensures public access to select school facilities, including the TuHS Sports Field and the TuHS– Byrom Elementary Cross Country Trail.



# Shared Use Paths

- Designated easements allow public access to corridors that include (or are intended to include) shared use paths to support trail connectivity
- Examples include the Tualatin River Greenway Trail and Byrom Shared Use Paths.



# Park Land by the #'s

- 133.6 acres of parks
  - 70.32 acres Community Parks, 48.94 acres Large NPs, 2.23 acres Small NPs, 5.82 acres Special Use Parks, and 6.55 acres Nature Parks)
- 115.8 acres of Greenways with 8.4 miles of trail
- 57.3 acres of Natural Areas
- 2 School Joint-Use Facilities
- 2 constructed Shared Use Paths, 7 others planned, partially acquired and/or constructed

# Systems & Services

- Parks and Open Space (Land)
- **Recreation Facilities**
- Programs and Events
- Park Maintenance, Condition and Access

# Amenities & Facilities

Outdoor Recreation					Athletic Facilities				Trails/ Natural Features			Amenities				Specialized						
Play Features	Flexible Use Lawn Areas	Horseshoe Pits	Skate Park	Water Play/ Spray Feature	Rectangular Fields	Ball Fields	Basketball Courts	Tennis Courts	Volleyball Court	Natural Areas & Wildlife Viewing	Trails	River Access	Interpretive Features	Barbeques	Dog Park	Covered Picnic Shelters	Restrooms	Picnic Tables	Art	Floating Dock/ Boat Ramp (non-motorized)	Kayak & Canoe Rentals	Special Use Buildings

- Amenities: Elements that support park comfort, attractiveness and use (e.g., restrooms, bike racks)
- Facilities: Developed areas, elements or buildings designed to support a recreation activity (e.g., community center, sports field, trail)
- Features: Natural elements in parks (river, wildlife viewing areas)



# Recreation Facilities

Facility Type	# of Existing City Facilities
Athletic Facilities	
Baseball/Softball Field	6
Soccer/Rectangular Field	7
Basketball Courts	6
Tennis Court	8
Outdoor Recreation Facilities	
Play Features	9
Lawn areas	8 sites
Horseshoe Pit	2
Water Play/Spray Feature	4

Other	
Recreation Building	7
Water (Dock/Boat Ramp)	4
Natural Areas/ Greenways	19 sites
Trails	11
Interpretive Features	11 sites
Art	7 sites
Picnicking	9 sites
Covered Shelter	7
Other	Skatepark; dogpark

# Facility Rentals

- Brown's Ferry Community Center
- Juanita Pohl Center
- Tualatin Heritage Center
- Tualatin Library (Community Room, Conference Room, Study Room)
- Sports fields
- Picnic shelters



# Systems & Services

- Parks and Open Space (Land)
- Recreation Facilities
- **Programs and Events**
- Park Maintenance, Condition and Access

# Recreation Programs & Events

- **Enrichment classes or learning:**
- **Recreation:** a wide range of active and passive, formal and informal, activities and programs that incorporate physical activity, sport, arts, dance, fitness, cultural and heritage activities, events and festivals.
- **Recreation program:** An organized camp, class, activity, or sport typically provided for a duration of time.
- **Special event:** A planned public or social occasion; and organized special activity or large group gathering.
- **Drop-in activity:** A scheduled, facilitated recreation opportunity that is planned, but not directed by staff (e.g., open gym)
- **Self-directed activity:** recreation experience that is not scheduled or guided by staff (e.g., playing on a playground)

# Recreation Programs & Events

- Program service areas (types of programs)
- Core programs
- Target audiences and participants
- Program locations
- Program providers



# Recreation Programs Matrix

**Table: Tualatin Program Review**

		Provider						Location Where Offered										Participants																													
		Program Provider	Community/ Special Use Parks	Neighborhood Parks	Greenways	Nature Park/ Natural Areas	Schools	Facilities and Other Locations											Populations Served																												
<b>Programs</b>	<b>Program Types</b>	Recreation	Tualatin Library	Tualatin Community Park (CP)	Tualatin Commons Park (SU)	Sweetfern Wayside Park (SU)	Albion Park (LVP)	Jurgens Park (LVP)	Libby Park (PMP)	Stoneidge Park (SNP)	Clifton Heights (G)	Hodges Creek (G)	Helenius (G)	Highway 101	Hollyford Estates (G)	Indian Meadows (G)	Kykong Creek (CT)	Myrtle Creek (South) (G)	Shaw Creek (G)	Shaw (G)	Tualatin Ever (G)	Little Wood Lake (P)	Hodges Creek Natural Area (NA)	Horvitz Grove (NA)	Jordan and William Tidler Wetland Park (P)	Sweet Woods (NA)	Sweet Ponds Natural Area (NA)	Sequoia Single-Mature Area (NA)	Victoria Woods Natural Area (NA)	Tualatin High School Sports Field (LJ)	Tualatin Elementary Cross-Country Trail (LJ)		Library	Community Center/Senior Center	Heritage Center	Other Facilities on Location	Preschool/ Toddler	Youth and Teens	Adults	Seniors	Specialized Recreation	People from Diverse Cultures	Families/Multi-generational		Notes		
<b>Preschool:</b> programs for kids under age 5	*Summer camps, sports camps, soccer programs, story time, musical performers, dance/movement, puppet shows	●	○	-	○	○	○	○	○	○	○	○	○	○	○	○	○	○	○	○	○	○	○	○	○	○	○	○	○	○	○	○	○	○	○	○	○	○	○	○	○	○	○	○	○	*PBR runs the summer camps, library does story time and associated programming. *Sports run by Skyhawk, Challenger and Kids Love Soccer	
<b>Youth / Teen Development:</b> out-of-school programs and non-sports programs for children and youth age 5-18 (mostly older kids)	*Summer camps, Lego/robotics, coding, science program, video games, cooking and nutrition, babysitter training, Spring Break program, Youth Advisory Council, Teen Library Committee, volunteer programs, movies, book discussion, technology (makerspace) programs, crafts, tutoring/homework help, misc. performers, scavenger hunt, Student Visual Chronicle, Park After Dark, etc.	○	○	-	○	○	○	○	○	○	○	○	○	○	○	○	○	○	○	○	○	○	○	○	○	○	○	○	○	○	○	○	○	○	○	○	○	○	○	○	○	○	○	○	*Other locations include field trips around the Metro region and the YMCA *YAC hosts seasonal activities for youth, library offers year-round		
<b>Older Adult/Senior Programs:</b> All programs and activities targeting adults and seniors (mostly seniors)	*Exercise, health, wellness, day trip, nutrition and cooking, support groups, legal advice, driver safety classes, workshops, live music/dancing, drop-in activities, movies, hiking, travel program, spelling bee, speed dating, arts/acting, Oktoberfest, etc. *Classes & educational programs, crafts, book discussion, topical programs	○	○	-	○	○	○	○	○	○	○	○	○	○	○	○	○	○	○	○	○	○	○	○	○	○	○	○	○	○	○	○	○	○	○	○	○	○	○	○	○	○	○	○	*JPC hosts support group for Spanish-speaking women *Other locations include trail around the Metro region, country and world * Including library programs for adults (not just seniors) here		
<b>Sports:</b> primarily non-competitive opportunities for younger children and older adults	*Soccer, basketball, volleyball, baseball, flag football, cheerleading, pickleball, tennis, dodgeball	○	-	-	○	○	○	○	○	○	○	○	○	○	○	○	○	○	○	○	○	○	○	○	○	○	○	○	○	○	○	○	○	○	○	○	○	○	○	○	○	○	○	○	*Dodgeball offered at high school, pickleball in conjunction with the Tualatin Pickleball Club *Remaining sports offered by Challenger, Skyhawk YMCA, Kids Love Soccer, etc.		
<b>Outdoor Recreation:</b> non-sports recreation programs offered outdoors	*Cano/kayak rentals, field trips, hiking *Teen outdoor rec: surfing, rock climbing, kayaking, whitewater rafting, etc.	○	-	-	○	○	○	○	○	○	○	○	○	○	○	○	○	○	○	○	○	○	○	○	○	○	○	○	○	○	○	○	○	○	○	○	○	○	○	○	○	○	○	○	*Field trips offered by Riverkeepers *Hiking offered by City, and only for older adults *Teen Camps offer a variety of outdoor opportunity		
<b>Nature Interpretation &amp; Environmental Education:</b> opportunities to learn about the natural environment	*Environmental camps, field trips, ArtWalk: nature interpreters, animal programs (birds, reptiles, bugs) *Wetland Rehabilitation, Put Down Boats in Tualatin (tree painting) throughout the City, biological education/activity with High School students, environmental engagement sessions	○	○	-	○	○	○	○	○	○	○	○	○	○	○	○	○	○	○	○	○	○	○	○	○	○	○	○	○	○	○	○	○	○	○	○	○	○	○	○	○	○	○	○	*Field trips for seniors offered through City *River Maintenance works with volunteers to provide environmental rehabilitation and education and partner with communities, non-profits that provide environmental education (if ends of trees, wetland conservation, SOLIVE, etc.)		
<b>Special Events:</b> festivals and activities offered around the city	*YAC: Issued House, Teen (telescope) Run, BlenderDash *Movies/Concerts/Summer Reading/Events on the Commons *Arbor Week, Story Nights/Holiday Lights, Pumpkin Regatta, Art Splash, Crawfish Festival, VinoWino, Paint Sale, Friends of Library book sales	○	○	-	○	○	○	○	○	○	○	○	○	○	○	○	○	○	○	○	○	○	○	○	○	○	○	○	○	○	○	○	○	○	○	○	○	○	○	○	○	○	○	○			
<b>The Arts:</b> activities or opportunities to experience displays of visual, fine and performing arts	*Summer camps, photo contests, special events, DIY & craft programs, ArtWalk, Quilt Barn Trail, music & drama performances at Library and Commons, Visual Chronicle (General, Historic and Student) collections displayed throughout the City	○	○	-	○	○	○	○	○	○	○	○	○	○	○	○	○	○	○	○	○	○	○	○	○	○	○	○	○	○	○	○	○	○	○	○	○	○	○	○	○	○	○	○	○	*Note that ArtWalk crosses a lot of different sites *All low/noise art programming (non-swims)	
<b>History and Culture:</b> events and activities that highlight the heritage of Tualatin and the Pacific Northwest	*Programs, lectures, arts, cultural activities, facility rentals, virtual tours, etc. *Art Walk (incorporates historical elements), library displays, Visual Chronicle Historic Collection *Quilt Barn Trail	○	○	-	○	○	○	○	○	○	○	○	○	○	○	○	○	○	○	○	○	○	○	○	○	○	○	○	○	○	○	○	○	○	○	○	○	○	○	○	○	○	○	○	○	*Provided almost exclusively through the Library and the Heritage Center	
<b>Cultural Diversity:</b> events or activities that celebrate or promote other cultures	*Hispanic cultural activities, bilingual programs (yoga, story time, etc.), language & citizenship classes, Hispanic Heritage Month *American Indian-themed presentations *Summer Reading, meeting rooms, coding site, volunteer opportunities, technology services, general library services	-	○	-	○	○	○	○	○	○	○	○	○	○	○	○	○	○	○	○	○	○	○	○	○	○	○	○	○	○	○	○	○	○	○	○	○	○	○	○	○	○	○	○	*Almost exclusively at the Library		
<b>Library:</b> all library programs and activities		-	○	-	○	○	○	○	○	○	○	○	○	○	○	○	○	○	○	○	○	○	○	○	○	○	○	○	○	○	○	○	○	○	○	○	○	○	○	○	○	○	○	○	○	○	

● Lots ○ Some ○ Few - None



# Program Service Areas

- **Preschool:** programs for kids under age 5
- **Youth/ Teen Development:** out-of-school programs and non-sports programs for children and youth age 5-18 (mostly older kids)
- **Older Adult/ Senior Programs:** All programs and activities targeting adults and seniors (mostly seniors)
- **Sports:** primarily non-competitive opportunities for younger children and older adults



# Program Service Areas

- **Outdoor Recreation:** non-sports recreation programs offered outdoors
- **Nature Interpretation & Environmental Education:** opportunities to learn about the natural environment
- **Special Events:** festivals and activities offered around the city
- **The Arts:** activities or opportunities to experience displays of visual, fine and performing arts



# Program Service Areas

- **History and Culture:** events and activities that highlight the heritage of Tualatin and the Pacific Northwest
- **Cultural Diversity:** events or activities that celebrate or promote other cultures
- **Library:** all library programs and activities

# Core Programs



- Library programs
- Special events
- Youth and teen development
- Older adult/senior programs



# Target Audiences/Participants

- The City provides opportunities for all ages
- Youth and senior programs appear most prevalent
- There are some (but not a lot of) opportunities specifically for Hispanic/Latino residents
- People with special needs are integrated into existing programs
- There are many multi-generational events



# Primary Locations

- Library
- Juanita Pohl Center
- Community Park, Brown's Ferry and Tualatin Commons
- Sports wherever there are fields/gyms
- Some at Community Centers, Heritage Center
- Very little offered in neighborhood parks, greenways and natural areas



# Systems & Services

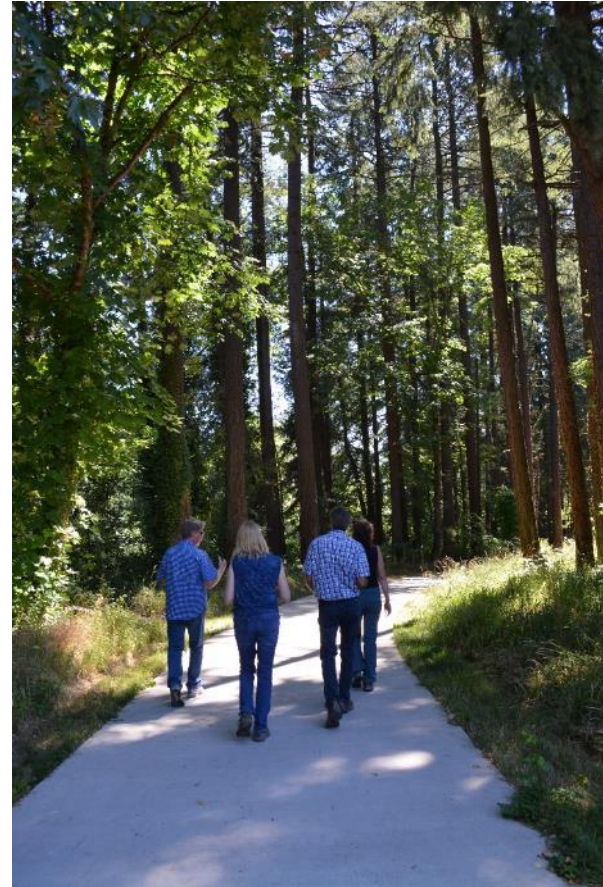
- Parks and Open Space (Land)
- Recreation Facilities
- Programs and Events
- Park Maintenance, Condition and Access

# Park Maintenance

- Parks Maintenance Division is responsible for:
  - The City's 306.6 acres of land in parks, greenways, natural areas.
  - The public spaces and landscaping around public buildings, core area parking lots, and in rights-of-way.
  - Vegetation management of 82 water quality facilities.
  - Street tree plantings and sidewalk maintenance program.
  - Reverse frontage landscape maintenance program

# Park & Facility Observations

- Park Tour: July 2014
  - What works well
  - What doesn't work well
  - What is outstanding and unique
  - What is noteworthy
  - Park character and maintenance



# Park & Facility Observations

- There is a strong emphasis on park character, sense of place and variety within the park system.
- There is strong interpretive theming throughout the system based on the region's natural and cultural history.
- Parks are innovative and interesting.



# Park & Facility Observations

- Parks are generally well-maintained and established.
- Maintenance needs will grow as facilities age and irrigation systems will need replacing.
- Some play areas could use updating.





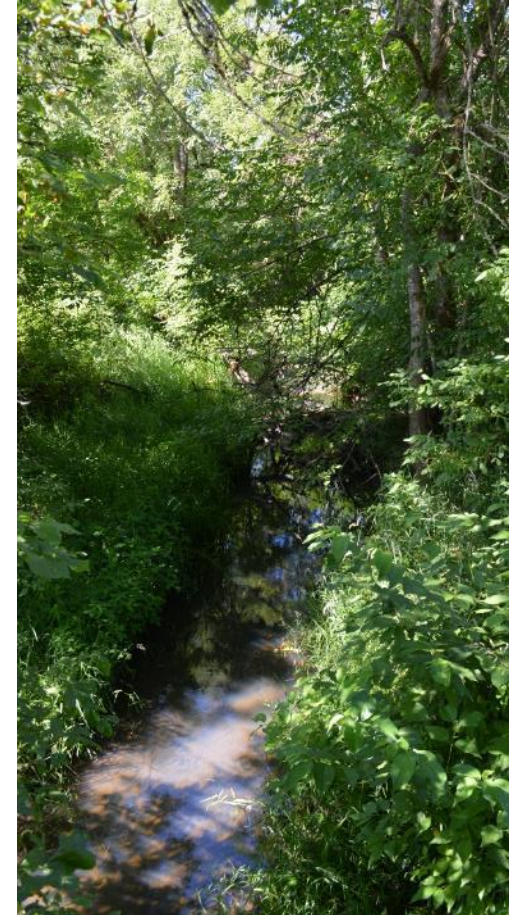
# Park & Facility Observations

- Existing buildings, often designed for other purposes, limit programming and efficacy of that programming.



# Park & Facility Observations

- Tualatin has a wide variety of natural features in its park system – waterways, wetlands, etc.
- These are all in need of targeted and on-going restoration efforts to stabilize banks, address water quality issues, remove invasive plants, enhance native plantings.





# Park & Facility Observations

- Large portions of Tualatin's parks consist of turf – some are used for sports fields and others are open play areas. The sports fields that were created with a sand-base have shown a clear return on investment.



# Park & Facility Condition

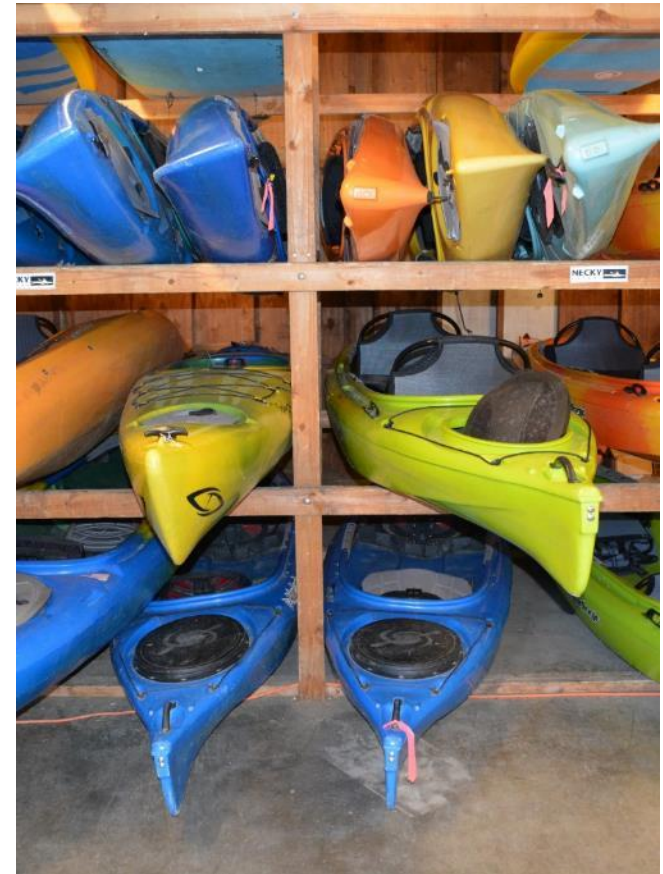
Parks	Outdoor Recreation				Athletic Facilities				Features				Amenities				Specialized			Additional Considerations						What is planned for the site?	What changes/improvements are needed?	Are there known issues or management needs for this site's natural areas?	Notes										
	Play Features	Flexible Use Lawn Areas	Horseshoe Pits	Skate Park	Water Play/Spray Feature	Rectangular Fields	Ball Fields	Basketball Courts	Tennis Courts	Natural Area & Wildlife Viewing	Trails	River Access	Interpretive Features	Barbeques	Dog Park	Covered Picnic Shelters	Restrooms	Picnic Tables	ART	Floating Dock/Boat Ramp (non-motorized)	Special Use Buildings	Lighting	Pathways/Plazas	Irrigation	Drainage					Benches/Seating	Parking	Plantings/Lawn (non-programmed)							
Atfalati Park	P*	F*				G	G	F/P	F/P	G/F	G	F					F						G	F	F	F	F	F					CIP includes complete R&R of tennis court surfacing and basketball courts. The wooden ship playground is nearing end of usable life, parts are no longer available. Many landscaping shrub beds could use updating. Irrigation system improvements ongoing. Poor drainage at low end of park.			*Kompan Wooden ship play feature in disrepair, parts are no longer available, modifications have been made by parks staff, sand surfacing needs to be replaced with wood fiber. Resurface basketball courts. Convert lower sports field to sand base with subsurface drainage-see attached layer Resurface playground and upgrade playground equipment. Design and construct second play area, group picnic shelter, and second parking lot per master plan (attached)  A complete trail and pathway review and improvement plan. Many small dirt trails are created by users, all small pedestrian bridges are slippery and hazardous all winter, large wood boardwalk holds excessive water all winter creating slippery conditions. Community Center needs to be renovated and ADA compliant. Renovate the barn and pave and terrace the outdoor amphitheater. Prairie restoration in two locations.		Saum Creek runs through the south end of the park. Bank stabilization, removal of invasive plants, enhancement with native plant and trees and periodic arboricultural assessment and pruning is needed within the riparian corridor.	
Brown's Ferry Park										F/P	F	F	F				F		G	F		F/P											Ongoing volunteer restoration planting are regularly programmed, Larger scale invasive cleanups by contracted or partnership organizations is warranted. A phases prairie restoration is planned with staff and possible partners with environmental no profits			The entire east end is heavily infested with invasive English Ivy, Seek supplemental funding opportunities with other organizations i.e.. Metro. Tualatin River is on the north side and Nyberg Creek bisects the property. Bank stabilization, removal of invasive plants, enhancement with native plant and trees and periodic arboricultural assessment and pruning is needed within the riparian corridor.	The Browns Ferry community Center is dated. Likely needs ADA accessible improvements. Other projects could include a complete native prairie restoration project per site master plan.		

• City staff reviewed each park, greenway, natural area, shared use path (outside greenways, parks, and natural areas) and school joint-use facility



# Park & Facility Condition

- Criteria applied to assess good/fair/poor conditions
- City staff evaluated outdoor recreation facilities, athletic facilities, trails/natural features, amenities, specialized uses, and various additional considerations
- City staff also provided comments on planning, maintenance, and other notes for each facility





# Park & Facility Condition

- Ibach and Jurgens Parks are in the best overall condition
- Most parks are generally in good condition with some areas in fair condition
- Most playgrounds in the system need some level of repair or replacement
- Most parks have some areas with drainage concerns and/or old irrigation systems that will need updating to increase efficacy and efficiency

# Park & Facility Condition

- All natural areas (whether within a park, greenway or designated natural area) need some combination of:
  - Restoration
  - native vegetation enhancement
  - bank stabilization
  - removal of invasive species
  - arboriculture assessment and/or pruning
- Volunteers assist in this work
- Additional on-going management is needed

# Park & Facility Condition

- Tualatin Commons, while generally in fair condition, needs improvements to furnishings, plumbing, fountain, subsurface tiles, and water quality that will be more expensive and complicated to address
- Tualatin Community Park, given the intensity of its programming and use, has the largest number of components in fair condition with repairs or replacements needed

# Park & Facility Condition

- Many park buildings were residences and have been repurposed for offices and program space
- These buildings generally do not function well for the current use – restrooms are inadequate, room size and layout limit programs and impact staffing needs to provide required supervision, storage is insufficient, etc.
- The quaintness and sense of being at home is negated by the lack of functionality in the structure and their spatial layout

# Preliminary ADA Notes



- Tualatin's focus on accessibility is noticeable.
- The City's system generally provides better access than comparable communities.



# Preliminary ADA Notes

- Opportunities for improvement:
  - Wood fiber surfacing in play areas lacks stability when moved around by children – a better material is needed
  - Sand areas need better maintenance to maintain accessibility in adjacent non-sand areas
  - Synthetic safety/poured-in-place surfacing is old, worn out, and in need of replacement
  - Ballfields are inconsistent with accessibility
  - Tualatin Commons fountain surface is slippery





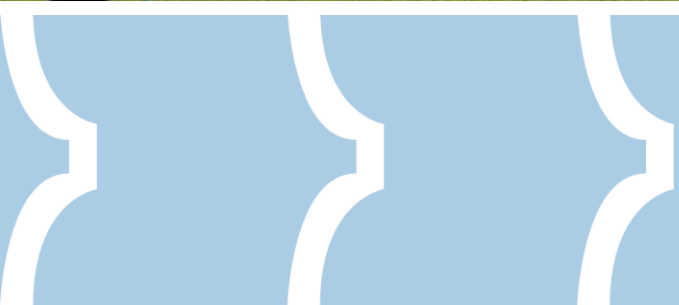
**TUALATIN**  
Accessible, Inclusive & Vibrant  
**Parks and Recreation**

**COMMUNITY  
NEEDS ACTIVITY**





**TUALATIN**  
Accessible, Inclusive & Vibrant  
**Parks and Recreation**

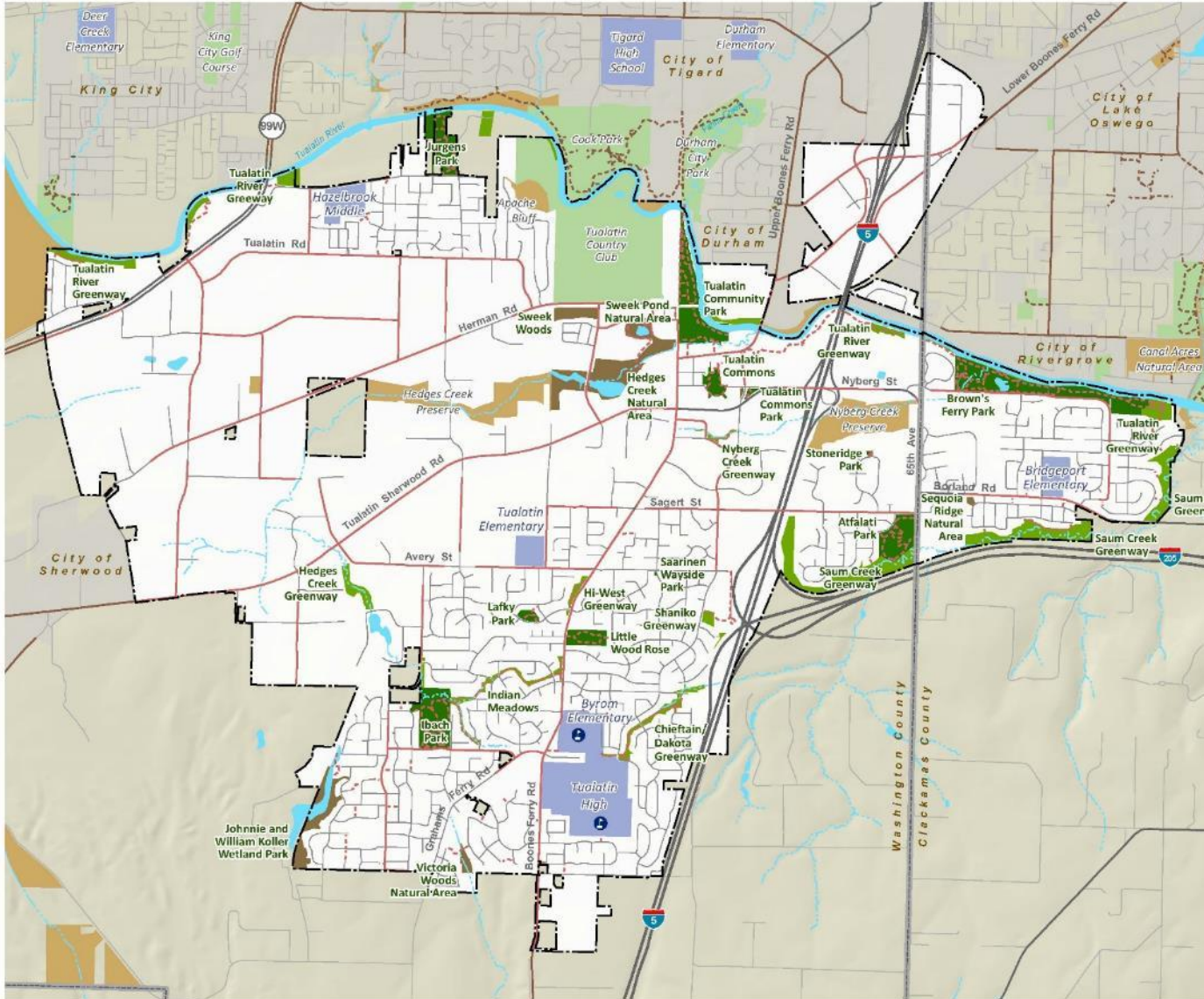


**DISCUSSION: PRELIMINARY  
NEEDS ASSESSMENT IDEAS**

# Discussion: Preliminary Needs Assessment Ideas

- Parkland
- Recreation facilities
- Trails
- Natural areas, wetlands, natural resources

# Park System Map

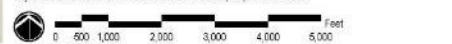


**Map 1:  
Existing Parks and Recreation  
Areas (Draft)**

- Tualatin Park and Recreation Facilities**
- Parks
  - Greenways
  - Natural Areas
  - School Joint-Use Facilities
- Other Park and Natural Areas**
- Other Developed Parks and Recreation Areas
  - Other Greenways and Natural Areas
  - Tigard-Tualatin District Schools
- Bike Routes and Trails**
- Tualatin Park Trails
  - Tualatin Bike Routes
  - Other Trails
  - Other Bike Routes
- Base Map Features**
- Tualatin City Boundary
  - Other City Boundaries
  - County Boundary
  - Freeways/Highways
  - Major Arterials
  - Local Streets
  - Streams
  - Rivers and Water Bodies

**M G** Date: September 2017  
 Sources: City of Tualatin, Parks and Recreation, 2017; Metro Regional Government, 2017; Oregon Spatial Data Library, State of Oregon, 2017.

Disclaimer: This map is derived from various digital database sources. While an attempt has been made to provide an accurate map, the City of Tualatin, OR assumes no responsibility or liability for any errors or omissions in the information. This map is provided "as is".







**TUALATIN**  
Accessible, Inclusive & Vibrant  
**Parks and Recreation**

**CLOSE/NEXT STEPS**

# Next Steps

- Community outreach and engagement
- Outreach findings summary
- Park and facility distribution analysis
- Preliminary needs
- Next Meeting: October 24



# PARKS AND RECREATION MASTER PLAN

## PROJECT ADVISORY COMMITTEE MEETING #2

Tuesday, September 12<sup>th</sup> 2017 | 6:30 to 8:30 pm



**Table: Tualatin Parks, Greenways and Natural Areas Inventory - Draft**

Parks	Total Acres	Type	Outdoor Recreation						Athletic Facilities					Trails/ Natural Features				Amenities					Specialized			Notes	
			Play Features	Flexible Use Lawn Areas	Horseshoe Pits	Skate Park	Water Play/ Spray Feature	Rectangular Fields	Ball Fields	Basketball Courts	Tennis Courts	Volleyball Court	Natural Areas & Wildlife Viewing	Trails	River Access	Interpretive Features	Barbeques	Dog Park	Covered Picnic Shelters	Restrooms	Picnic Tables	Art	Floating Dock/ Boat Ramp (non-motorized)	Kayak & Canoe Rentals	Special Use Buildings		
<b>Parks</b>																											
Tualatin Community Park	27.11	CP	1	•	2	1	1w	2, 1 <sup>L</sup>	2, 1 <sup>L</sup>	2 <sup>L</sup>	2 <sup>L</sup>		•	•	•	•	3	1	4 <sup>R</sup>	1	•	•	BR	•	4	Community Services Administration Offices, Juanita Pohl Center, Lafky House, Van Raden Community Center, Motorized boat launch, Pickleball overlay on tennis courts, Pedestrian bridge	
Brown's Ferry Park	43.21	CP											•	•	•	•				1	•	•	FO	•	2	Community Center. Willowbrook Arts Camp: June-Aug	
Ibach Park	20.08	LNP	2	•			1w	2	1	1	2		•						2	1	•	•				Teen play equipment	
Atfalati Park	13.27	LNP	2	•				1	1	1	2		•							1	•						
Jurgens Park	15.59	LNP	2	•			1w	1	1	1	2		•	•	•	•			1	1	•	•	FD			Raised garden beds	
Lafky Park	2.00	SNP	1	•							1			•													
Stoneridge Park	0.23	SNP	1	•																							
Tualatin Commons	4.83	SU		•			1s												1	•	•					Crawfish fountain splash pad, Spray park	
Tualatin Commons Park	0.64	SU		•																							
Saarinen Wayside Park	0.06	SU											•														
Little Wood Rose	6.55	NP											•	•													
<b>Total</b>	<b>133.6</b>		<b>9</b>	<b>8</b>	<b>2</b>	<b>1</b>	<b>4</b>	<b>7</b>	<b>6</b>	<b>6</b>	<b>8</b>	<b>0</b>	<b>7</b>	<b>5</b>	<b>3</b>	<b>7</b>	<b>3</b>	<b>1</b>	<b>7</b>	<b>6</b>	<b>8</b>	<b>6</b>	<b>3</b>	<b>1</b>	<b>6</b>	<i>Total includes 15 acres of greenways which are located within parks</i>	
<b>Greenways</b>																											
Chieftain/Dakota	6.14	G											•	•													3525 ft trail
Hedges Creek	11.66	G											•	•													3795 ft trail
Helenius	0.43	G												•													250 ft trail
Hi-West Estates	1.59	G												•													935 ft trail
Indian Meadows	3.82	G												•													1660 ft trail
Nyberg Creek	2.76	G											•	•													750 ft trail
Nyberg Creek (South)	2.3	G											•	•													1000 ft trail
Saum Creek	54.22	G												•													9435 ft trail
Shaniko	3.3	G											•	•													2284 ft trail
Tualatin River	29.56	G											•	•								•	BR			20721 ft trail, Boat ramp at 99W	
<b>Total</b>	<b>115.8</b>		<b>0</b>	<b>0</b>	<b>0</b>	<b>0</b>	<b>0</b>	<b>0</b>	<b>0</b>	<b>0</b>	<b>0</b>	<b>0</b>	<b>6</b>	<b>9</b>	<b>0</b>	<b>3</b>	<b>0</b>	<b>0</b>	<b>0</b>	<b>0</b>	<b>0</b>	<b>0</b>	<b>1</b>	<b>1</b>			
<b>Natural Areas</b>																											
Hedges Creek Natural Area	29.06	NA											•	•													
Hervin Grove Natural Area	0.29	NA											•														
Johnnie and William Koller Wetland Park	15.32	NA											•														
Sweek Woods Natural Area	5.03	NA											•														
Sweek Ponds Natural Area	4.68	NA											•	•							•			1		Tualatin Heritage Center	
Sequoia Ridge Natural Area	0.65	NA											•	•													
Victoria Woods Natural Area	2.22	NA											•	•													
<b>Total</b>	<b>57.3</b>		<b>0</b>	<b>0</b>	<b>0</b>	<b>0</b>	<b>0</b>	<b>0</b>	<b>0</b>	<b>0</b>	<b>0</b>	<b>0</b>	<b>6</b>	<b>4</b>	<b>0</b>	<b>1</b>	<b>0</b>	<b>0</b>	<b>0</b>	<b>0</b>	<b>0</b>	<b>1</b>	<b>0</b>	<b>0</b>	<b>0</b>	<b>1</b>	
<b>School Joint-Use Facilities</b>																											
Tualatin High School Sports Field	0	JU						1																			Leonard Pohl Field
TuHS-Byrom Elementary Cross County Trail	0	JU											•														
<b>Total</b>	<b>0</b>		<b>0</b>	<b>0</b>	<b>0</b>	<b>0</b>	<b>0</b>	<b>1</b>	<b>0</b>	<b>0</b>	<b>0</b>	<b>0</b>	<b>0</b>	<b>1</b>	<b>0</b>	<b>0</b>	<b>0</b>	<b>0</b>	<b>0</b>	<b>0</b>	<b>0</b>	<b>0</b>	<b>0</b>	<b>0</b>	<b>0</b>	<b>0</b>	
<b>Shared Use Paths</b>																											
TBD	0																										
TBD	0																										
<b>Total</b>	<b>0</b>		<b>0</b>	<b>0</b>	<b>0</b>	<b>0</b>	<b>0</b>	<b>0</b>	<b>0</b>	<b>0</b>	<b>0</b>	<b>0</b>	<b>0</b>	<b>0</b>	<b>0</b>	<b>0</b>	<b>0</b>	<b>0</b>	<b>0</b>	<b>0</b>	<b>0</b>	<b>0</b>	<b>0</b>	<b>0</b>	<b>0</b>	<b>0</b>	
<b>Grand Total</b>	<b>306.6</b>		<b>9</b>	<b>8</b>	<b>2</b>	<b>1</b>	<b>4</b>	<b>8</b>	<b>6</b>	<b>6</b>	<b>8</b>	<b>0</b>	<b>19</b>	<b>19</b>	<b>3</b>	<b>11</b>	<b>3</b>	<b>1</b>	<b>7</b>	<b>6</b>	<b>9</b>	<b>7</b>	<b>4</b>	<b>1</b>	<b>7</b>		
CP- Community Park, LNP- Large Neighborhood Park, SNP- Small Neighborhood Park, SU- Special Use, NP- Natural Park, JU- Joint Use, G- Greenway, NA-Natural Area R- Reserveable, L- Lighted, W- Low volume water interpretive, S- Splash Pad or Spray Feature, BR- Boat Ramp, FD- Fishing dock Revised 8/30/17 [Trail data are incomplete, but included where available]																											

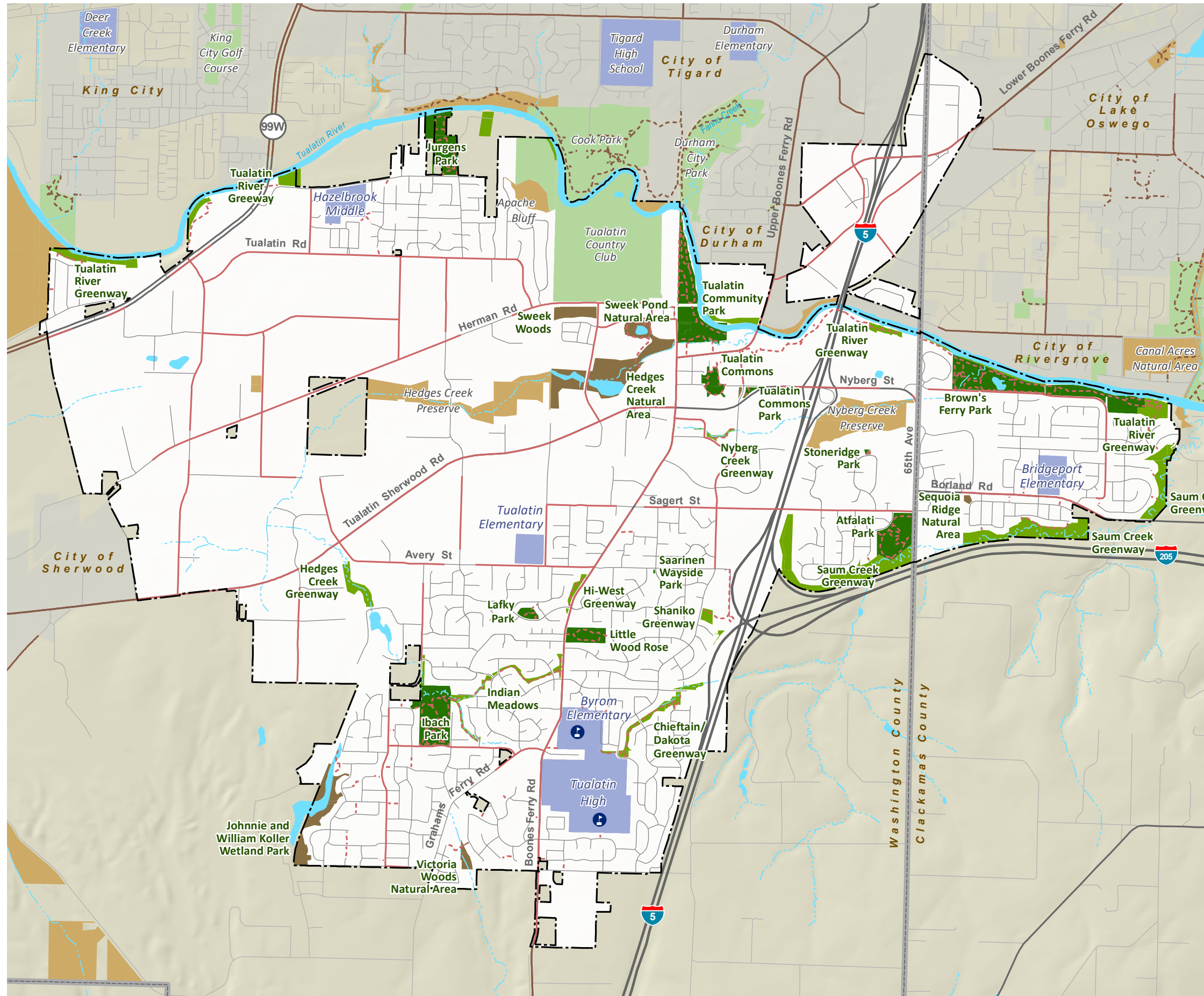




# Parks & Recreation Master Plan

City of Tualatin

## Map 1: Existing Parks and Recreation Areas (Draft)



### Tualatin Park and Recreation Facilities

- Parks
- Greenways
- Natural Areas
- School Joint-Use Facilities

### Other Park and Natural Areas

- Other Developed Parks and Recreation Areas
- Other Greenways and Natural Areas
- Tigard-Tualatin District Schools

### Bike Routes and Trails

- Tualatin Park Trails
- Tualatin Bike Routes
- Other Trails
- Other Bike Routes

### Base Map Features

- Tualatin City Boundary
- Other City Boundaries
- County Boundary
- Freeways/Highways
- Major Arterials
- Local Streets
- Streams
- Rivers and Water Bodies

Date: September 2017

Sources: City of Tualatin, Parks and Recreation, 2017; Metro Regional Government, 2017; Oregon Spatial Data Library, State of Oregon, 2017.

Disclaimer: This map is derived from various digital database sources. While an attempt has been made to provide an accurate map, the City of Tualatin, OR assumes no responsibility or liability for any errors or omissions in the information. This map is provided "as is".







# **Tualatin Crawfish Festival**

Tualatin Community Park  
HTC Race Series

*Event Completion Report*

## Table of Contents

### 6.1 – Event Report

6.1.1 – Summary and Challenges.....	3
6.1.2 – Major Events.....	4
6.1.3 – Schedule/Run of Show.....	5
6.1.4 – Attendance.....	12
6.1.5 – Financials.....	12
6.1.6 – Accidents, Property Damage and Claims.....	14
6.1.7 – Marketing.....	14
6.1.8 – Statement.....	14
6.1.9 – Reflection.....	15
6.1.10 – Feedback.....	15

The following content addresses Section 6 of the Crawfish Festival Co-Sponsor Agreement between the City of Tualatin and Better Series, LLC.

**6.1.1** - *A narrative summary of the highlights and special challenges of the event.*

- The 2017 Tualatin Crawfish Festival occurred Friday, August 4th from 4:00pm – 10:00pm and Saturday, August 5<sup>th</sup> from 10:00am – 10:00pm at the Tualatin Community Park. Admission was free on Friday and \$5 on Saturday. Crawfish Crawl took place Saturday morning from 7:30am – 12:00pm
- HTC staff and Key events worked with the Tualatin Parks and Recreation maintenance staff to map-out, set-up and prep the festival grounds from Wednesday, August 2<sup>nd</sup> until August 4<sup>th</sup>
  - o Large stakes are required to hold down a large ‘Sessions’ star tent. Tualatin Parks and Recreation has no record of the location of the water pipes running through the field and we risked rupturing these pipes. No damage was done.
- Temperatures reached the mid to high 90’s. To combat the high temperatures HTC rented misters and a misting tents. Five vendors backed out due to the heat and we are confident in our speculation that the extreme temperatures lowered attendance numbers.
- A multi-chamber breakfast took place the morning of August 4<sup>th</sup> at Hayden’s Lakefront Grill.
- 30+ vendors selling food, ice-cream, fitness products and a variety of other goods and services participated in this year’s festival.
  - o A challenge with vendors was their desire to move location on-site. HTC Race series will take measures to change the vendors location and locate them off the dirt infield on the southwest corner of the park.
  - o Two food vendors selling elephant ears were located two booth locations from one another. HTC took measures to limit competition by rejecting multiple food vendors applications however further attention to detail will be made for 2018 to ensure the event does not occur again. The standard vendor application will be rewritten and menu exclusivity for vendors will be reevaluated.
- Festival sponsored food was contracted to Spin Events & Catering whose menu consisted of a platter of crawfish, andouille sausage, corn, potatoes, watermelon and a variety of sauces. Spin Catering provided hors d’oeuvres for VIP on opening night, crawfish for the Crawfish Eating Competition and Watermelon for the kids’ watermelon eating contest.
- Live music was provided throughout the festival. Friday’s lineup consisted of Bigfoot Mojo and Dancehall Days. Saturday’s lineup consisted of Lisa Mann, Norman Sylvester, Ty Curtis and Curtis Salgado. A teen performance was made by the Youth Music Project.
- Additional entertainment included carnival games, magicians, balloon animals and a clown. The children’s stamp booklet sponsored by Regence was popular along with the cornhole tournament, water balloon throwing contest and sack races.
  - o One challenge is finding activities for teenagers.

## **6.1.2 - A description of all major events**

### **Music**

The music lineup consisted of Bigfoot Mojo, Dancehall Days, Lisa Mann, Norman Sylvester, Ty Curtis, and Curtis Salgado. This lineup was the primary draw for most of our consumers. Friday's lineup played modern music, Saturday's aligned with a Blues theme. We plan on maintaining a consistent theme moving forward.

### **Crawfish Crawl**

The Crawfish Crawl consisted of a 5k, Half-Marathon and Relay Race. Runners and walkers started at the Tualatin Community Park and made their way up the Tualatin River and Fanno Creek Greenway. Racers looped around Durham City Park and back towards the Tualatin River. There, relay participants continued back to the start to tag their next teammate. 5K participants looped around Cook Park and then head back to Tualatin Community Park to finish. Half Marathon participants continued along the Tualatin River, through neighborhood streets, past Tigard High School and back towards the start. Half Marathoners continue down Tualatin Rd to make a 6-mile loop and finish back at the Tualatin Crawfish Festival. The kids race was a 1 mile out-and-back course. 687 racers participated.

### **Crawfish Eating Contest**

The eating contest emceed by Mayor Ogden drew a considerable crowd of roughly 100. The contest took place on the southeast section of the park. 15 participants consumed roughly 125lb's of crawfish. We will highlight this event next year by placing it between bands and near the main stage.

### **Kids Watermelon Eating Contest**

The watermelon eating contest drew a considerable crowd of roughly 50 participants. Kids lined the outside of the tables and ate a quartered section of a small watermelon. All participants received a prize. It is a fun and highly marketable event that will be brought back next year.

### **Cornhole Tournament**

The cornhole tournament consisted of 16 participants and lasted roughly 40 minutes. It drew a small crowd and sponsors provided gift cards as prizes to the winning pair.

### **Activities Field**

Kids participated in sack races and water balloon throwing contests throughout the day in a fenced off labeled the activities field. These were popular with younger kids and we have made it a priority to continuously have these events throughout next year's festival.

### **Crawkid Stamp Booklet**

Kids collected stamps from vendors and carnival games in the Regence Crawkid Stamp Booklet. They would then trade completed stamp booklets for various prizes. Participating vendors had activities for kids and enjoyed the engaged interaction. We will bring this back next year.

### **Pickleball**

Local pickleball clubs came together to provide free family pickleball lessons and drills for attendees. While roughly 100 people participated, the club was disappointed they did not reach more festival goers. Their solution is to return next year with large signs that clearly advertise free lessons.

**6.1.3 – Schedule of Events**

**Friday, August 4, 2017 - Tualatin Community Park**

- 4:00 PM Gates Open to Public
- 4:00 PM Food, Beer and Wine Booths Open
- 4:00 PM Columbia Bank Private Event
- 4:00pm - 6:00pm Bigfoot Mojo
- 7:30pm – 10:00pm Live Music -DANCEHALL DAYS

**Saturday, August 5, 2017 - Tualatin Community Park**

- 7:30amCrawfish Crawl Kids Race begins
- 8:00amMagician
- 10:00am Crawfish Festival - Gates Open to public
- 10:00am Food, Beer and Wine Booths Open
- 10:00am Vendor Village Opens
- 10:00am CrawKID Zone Opens (Bubble Pond, Police Vehicle, Dunk Tank and more!)
- 10:00am Carnival Games Open
- 10:00am Live Music Begins - LISA MANN (10:00-12:00)
- 11:00am Clown/Balloon Animals
- 12:00pm Sack Races
- 1:00pm Magician
- 1:00pm Corn Hole Tournament
- 1:30pm Live Music - NORMAN SYLVESTER (1:30-3:00)
- 2:00pm Watermelon Eating Contest
- 2:30pm Water Balloon Toss
- 3:00pm Face Painting
- 3:45pm Live Music - TY CURTIS (3:45-6:00)
- 5:30pm Crawfish Eating Contest
- 7:30pm Live Music - CURTIS SALGADO (7:00-9:45)
- 10:00pm Fireworks (Cancelled)

**Run of Show**

---

**Wednesday**

- VIP - Stake out VIP section, Catering, Step and Repeat/Social Media, Stage
- Load trucks
- Stake out Sessions Star Tent

---

**Thursday, August 3rd**

--	--	--



<b>8:00am</b>	<b>Arrive on site</b>	Staff: Charlie
<b>7:00am</b>	<b>Fence Installation - Key Manufacturing (Annie)</b> -Perimeter (Maintain Vendor Load-in A B) - VIP Tent - Step and Repeat Posts - Racing Field	
<b>8:00am</b>	<b>Staff Arrives on Site</b> <b>Team Meeting</b> - 8:00-8:15  <b>Festival Grounds Setup</b> - Vendor Layout (w/ paint, stake flags) - VIP (w/ paint, stake flags) - Racing Field Layout - Crawfish Stencil Print - Set-up Entrance w/ tables - Equipment distribution (Tables, Chairs, Field Games) - Tents, Garbage Cans, Water, Crawkid Zone. - VIP TENT - Entrance Setup -Set up electrical outlets, Water hoses, Chairs -Social Media Tent	Staff Andrew Blair, Andrew Rillat, Isaiah Hendricks, James Cory, DJ Arnold
<b>8:00am</b>	Stage Setup	
<b>10:00am - 12:00pm</b>	Bounce House Pros - Carnival games drop-off	
<b>11:00am</b>	Toilets Setup	
<b>6:30pm</b>	Security Arrives on site	

**Friday, August 4th**

<b>7:30am</b>	<b>VIP Breakfast</b> - Host - Linda Moholt    - Location: Hayden's - Create 4 raffle prizes (Lead: Cassie) -VIP Passes (?)	Staff: Dan/Jude
<b>7:45am</b>	Staff Arrives on site - Team Meeting (7:45 - 8:00) - Parking signs	

<b>8:00am</b>	<b>Vendor Setup</b> Assist Load-in -2 Volunteers at parking lot entrance -Staff on site assists load in w/ golf carts	Lead: Charlie, Andrew Rillat Assist: Danelle @ 2:00
<b>8:00am</b>	Equipment Load-in - Dumpsters - Misters (Pick up @ Interstate Special Events w/ Check and Credit Card) (4 total) -Set-up - Carnival Games _____	Lead: Charlie, Luke Assist: _____

<b>9:00am</b>	Beer Garden Setup	Lead: Linda, Charlie

<b>10:00am</b>	<b>VIP Tent</b> - Tables, Chairs, Catering Food (Steve assist), Beer, Cornhole	Lead: Morgan, Charlie
4:00pm - 6:00pm	<b>Musicians</b> Bigfoot Mojo -Roaming Musicians	

<b>3:00pm</b>	<b>Pickleball</b> - Instructors Arrive, begin setup - Staff places extra chairs around the courts	

<b>1:00pm</b> <b>2:00pm</b> <b>3:00pm</b> <b>6:00pm</b>	<b>Volunteers</b> - Setup volunteers station - Shift 1 Volunteers Arrive, Check-in, Instruct responsibilities - Volunteers set-up at post  - Shift 2 of volunteers arrive. -30min overlap to learn responsibilities	
<b>4:00pm</b>	<b>Festival Opens</b>	

<b>5:00pm</b> <b>6:00pm</b>	<b>Music</b> DanceHall Days - Load-in DanceHall Days - Sound Check	
<b>5:45pm</b> <b>6:00pm</b>	DJ is ready Bigfoot Mojo Ends, DJ Starts	
<b>7:15pm</b>	Mayor Welcome	
<b>7:30pm -</b> <b>10:0pm</b>	Dancehall Days Performance	
<b>9:30pm</b> <b>9:45pm</b>	Last Call - Alcohol Booth is Closed	

**Saturday**

<b>4:00am</b>	<b>Crawfish Crawl</b> Staff arrives - Course Setup (Luke)	Course: Luke Start: Ross
---------------	---	-----------------------------

	<ul style="list-style-type: none"> <li>- Vendor Start Setup (Ross)</li> </ul>	
<b>5:30am</b>	Registration Tent Setup (Cassie, Morgan)	
<b>6:30am</b>	Gear Check and Registration Open <ul style="list-style-type: none"> <li>- Registration and Race-Day Packet Pick-up Open</li> <li>- All Vendors in place and ready to go (Cassie)</li> <li>- Sound Check</li> </ul>	
<b>6:30am</b>		
<b>7:00am</b>	DJ Music Starts	
	Course setup Complete	
<b>7:00am</b>	<ul style="list-style-type: none"> <li>- All volunteers in place on course</li> <li>- Final course walk-through and dry ride</li> <li>- Text all staff to let them know course is officially ready.</li> </ul>	
	Pre-Race Announcements	
<b>7:30am</b>	<ul style="list-style-type: none"> <li>- The Les Schwab Tires and Hood to Coast Race Series welcomes you to the 2017 Crawfish Crawl</li> <li>- 30 minutes until the Kids run</li> <li>- 60 minutes until the Race</li> <li>- Active Edge Warm-up Tent</li> <li>- Sponsor Announcements</li> </ul>	
<b>7:45am</b>	-Kids run	
<b>8:00am</b>	Pre-Race Announcements	
<b>8:10am</b>	- <b>Mayor Ogden Speech (Right before Start)</b>	
<b>9:00am</b>	5k/Half-marathon start Relay Race Starts	
<b>10:00am</b>	First Racers Reach Finish Line	
<b>12:00pm</b>	-Finish Line Announcements to include Sponsors and Finishers. - Handing out of water and medals (Race Volunteers)	

	Locate and follow last walker/runner Last Walker Course is cleaned up.	

Festival

<b>8:00am</b>	Staff Arrives on site Team Meeting -Parking -Volunteer locations -Roles	
<b>9:00am</b> <b>9:00am</b>	Vendor Staff Arrives Lisa Mann Setup	
<b>9:30am</b> <b>9:45am</b>	Entrance in place Volunteers and Staff in place	
<b>10:00am</b>	<b>Festival Grounds Open</b> - Crawkid Zone, Vendor Village, Food/Beer	
<b>10:00am</b> <b>10:00am</b>	Emcee: Welcome - (depending on crowd size) Lisa Mann (10:00 - 12:00)	

<b>11:00am</b> <b>11:00am</b>	Emcee: Clown Announcement Clown, Magician, Balloon Creations - 11:00am - 3:00pm	
<b>11:40am,</b> <b>11:50am</b>	Emcee announcement: Sack races on racing field, Corn Hole Tournament signup	
<b>12:00pm</b> <b>12:00pm</b>	Sack Races - Kael Lisa Mann Breakdown	
<b>12:00pm</b>	Youth Music Project Setup and performance.	
<b>12:30pm</b>	Norman Sylvester Setup	



<b>12:15pm</b> <b>12:30pm,</b> <b>12:45pm</b>	<b>Emcee announcement:</b> <i>Cornhole tournament sign-up @1:00., Kids watermelon eating contest@200</i>	
<b>1:00pm</b>	Youth Music Project breakdown	
<b>1:00pm</b>	Corn Hole Tournament - Morgan	

<b>1:00pm</b> <b>1:30pm</b>	Norman Sylvester Sound Check Norman Sylvester Starts	
<b>1:30pm</b> <b>1:45, 2:00</b>	Emcee Announcement: Watermelon eating contest @2:00, Water Balloon Toss @2:30	
<b>1:50pm</b> <b>2:00pm</b>	<b>Mayor Emcee the Eating Contest</b> Watermelon Eating Contest -	
<b>2:15pm</b> <b>2:30pm</b>	Emcee Announcement: Water Balloon Toss Water Balloon Toss - Kael	
<b>3:00pm</b> <b>3:05pm</b> <b>3:00pm</b>	Norman Sylvester Breakdown Ty Curtis Setup, soundcheck Face Painting	

<b>2:55pm</b> <b>3:00pm</b>	Emcee - Ty Curtis introduction Ty Curtis performance	
<b>5:20pm</b> <b>5:30pm</b>	<b>Mayor Emcee Crawfish Eating Contest</b> Crawfish Eating Contest - Brandon	
<b>5:00,</b> <b>5:15,5:30</b>	Emcee Announcement - Crawfish Eating Contest	

<b>5:30pm</b>	Mayor <b>Emcee the Eating Contest</b> Crawfish Eating Contest - Brandon	
<b>6:00pm</b> <b>6:00pm</b>	Ty Curtis -Ends, tear down Curtis Salgado Set up	
<b>6:45pm</b> <b>7:00pm</b>	<b>Mayor Speech and Introduction</b> Live Music Curtis Salgado	
<b>9:30pm</b>	Flame Twirlers	
<b>9:15pm</b>	Emcee: Final Call	
<b>9:45pm</b> <b>9:45pm</b>	Curtis Finishes DJ plays nighttime music	
<b>10:00pm</b>	Cleanup -Wait until crowd dissipates -Fold up tents, collect tables.	
<b>Sunday</b>	Overnight security on site through Sunday morning	

**6.1.4 - Estimated overall attendance and the attendance at each major activity.**

**Crawfish Festival**

Friday: 1,455  
Saturday: 3,481  
Total: 4,936

**Crawfish Crawl**

Crawfish 5k: 342  
Crawfish Half-Marathon: 189  
Relay: 148  
Kids Run: 23

**6.1.5 - A schedule of all fees, revenues, and expenditures**

<b>Crawfish Festival Profit/Loss 2017</b>	
<b>Income</b>	
<b>4-0000 REVENUE</b>	
4-0140 Food Vendors	\$238.26
4-0150 Beer Garden	\$15,062.72
4-4200 Entry Fees	\$17,480.85
4-4300 Sponsorship - Event Cash	\$33,442.13

<b>Total 4-0100 COMPENSATION RECEIVED</b>	\$66,223.96
<b>Total 4-0000 REVENUE</b>	\$66,223.96
<b>Total Income</b>	\$66,223.96
<b>Cost of Goods Sold</b>	
<b>5-5120 Decorations/Chutes/Banners</b>	\$934.00
<b>Total 5-5110 Start /Course/ Finish</b>	\$934.00
<b>Total 5-5100 Cost of Events</b>	\$934.00
<b>5-5210 Permits</b>	\$169.00
<b>Total 5-5200 Course Development</b>	\$169.00
<b>5-5505 Food for event</b>	\$4,932.50
<b>5-5506 Beer for event</b>	\$8,882.00
<b>Total 5-5500 Race Supplies</b>	\$13,814.50
<b>5-5710 Portable Toilets</b>	\$2,495.00
<b>Total 5-5700 Sanitation</b>	\$2,495.00
<b>Total 5-0000 COST OF GOODS SOLD</b>	\$17,412.50
<b>Total Cost of Goods Sold</b>	\$17,412.50
<b>Gross Profit</b>	\$48,811.46
<b>Expenses</b>	
<b>6-0050 Ambulance/Medical</b>	\$1,181.25
<b>6-1510 Finish Entertainment</b>	\$13,202.12
<b>6-1511 Band</b>	\$1,100.00
<b>6-1520 Announcers</b>	\$350.00
<b>6-1530 Security</b>	\$809.75
<b>Total 6-1500 FINISH</b>	\$15,461.87
<b>6-6014 Advertising</b>	\$1,795.00
<b>Total 6-6010 PUBLICITY</b>	\$1,795.00
<b>6-6040 Contract Labor</b>	\$8,548.64
<b>Total 6-6040 Contract Labor</b>	\$8,548.64
<b>6-6050 CONTRIBUTIONS &amp; DONATIONS</b>	\$5,300.00
<b>6-1041 Tents, Tables &amp; Other</b>	\$2,121.65
<b>6-1042 Stages &amp; Towers</b>	\$2,460.00
<b>6-1045 Lighting -Entertain. Production</b>	\$5,394.35
<b>6-1046 Lighting - General</b>	\$2,037.79
<b>Total 6-1040 Start / Finish</b>	\$12,013.79
<b>6-1052 Barricades</b>	\$4,226.00
<b>Total 6-1050 Course</b>	\$4,226.00
<b>Total 6-6080 EQUIPMENT (RENTAL)</b>	\$16,239.79
<b>6-6294 Auto Rental</b>	\$920.00
<b>6-6296 Staff Fuel</b>	\$112.39
<b>Total 6-6292 Automobiles</b>	\$1,032.39
<b>6-6302 Work and Employee /Meals</b>	\$24.38

Total 6-6300 Meals	\$24.38
Total 6-6290 TRAVEL & ENTERTAINMENT	\$1,056.77
Total 6-0000 EXPENSES	\$49,583.32
Total Expenses	\$49,583.32
Net Operating Income	-\$771.86
Net Income	<b>-\$771.86</b>

**6.1.6 - List of accidents, property damage, claims made**

Claims:

Tualatin Kiwanis Club – Vendor

- Claims violation of vendor agreement by allowing two vendors to sell elephant ears.
  - Application process and other necessary adjustments have been made to address the issue.

Tualatin Parks and Recreation Staff

- Minor grass damage due to excess water from misters.
- Minor damage to public restrooms and lack of restroom soap.

**1.1.7 - Copies of major marketing documents and advertisements**

Pamplin Media

- 16-page insert published and distributed to a readership of over 60,000 in Beaverton, Tigard, Tualatin, Lake Oswego, West Linn and Wilsonville.
  - o <http://publications.pmgnews.com/fpubs/2017/tualatin-crawfish-festival-2017/mobile/index.html>

Tualatin Life

- 4-page insert outlining the Tualatin Crawfish Festival and Tualatin Crawfish Crawl.

For PDF formats of either documents please contact Charles Farrenkopf at [Charles@htcrelay.com](mailto:Charles@htcrelay.com)

**1.1.8 - Statement that all employees, vendors, and others that are due payment for products and services have been paid in full.**

It is to the best of our understanding that employees, vendors and third-party contractors have been paid in full. Any outstanding debts will be corrected appropriately.

**1.1.9 - Summary of operation concerns and areas to improve for future festivals.**

**Improvement**

- Improve vendor application and location process.
- Expand efforts to connect and work with local businesses.
- Provide activities that spur community involvement.
- Sell advertising space to local companies.
- Provide more activities for consumers.
- Increase marketing efforts through mediums like Alpha Media and Entercom.

**1.1.10 - Any other relevant issues Better Series, LLC wants to address**

We would like the City of Tualatin to consider moving the date of the festival. We identify weather as a primary combatant to attendance and would like to have the festival before the heatwave.



# City of Tualatin

Summer Programs Recap and Fall Preview 2017





# Tualatin Public Library



New online reading log options!

3,000+ books given away

Weekly outreach at Summer Lunch site

Great participation by all ages

Revamped Summer Teen Volunteer program!





# Summer Reading at the Commons

Summer Reading fosters human development through promoting literacy & education, increases cultural unity, and creates a sense of place.





# Summer Camp 2017



6 weeks, 24 sessions for ages 4-11  
52 kids per day, 1,560 total  
6,723 hours!





# Teen Adventure Camp

9 weeks, 18 sessions  
24 teens per day, 648 total  
4,860 hours







# CONCERTS ON THE COMMONS

8 concerts  
Over 7,500 attendees (up over 15%)  
16 sponsors







# MOVIES ON THE COMMONS



8 movies  
1,300 people  
8 sponsors





The logo for 'ART splash' features the word 'ART' in large, white, serif capital letters. Below it, the word 'splash' is written in a smaller, purple, lowercase sans-serif font. The text is set against a background of abstract, watercolor-style splashes in shades of blue, green, and yellow.

3 days, 52 artists

Live music

Kids' art tent

Chalk it Up

2,500 people





# Teen Volunteers



**TEAM Tualatin** 71 volunteers, 2,057 service hours

**Library** 37 volunteers, 940 hours

**Tualatin Youth Advisory Council**

18 volunteers, 350 hours





# Police

## National Night Out

20 neighborhood  
events

## GREAT Camp

Gang Resistance  
Education and Training

Four weeks with 212  
students





# Juanita Pohl

## Summer Programs

Over 3,300 participants in fitness, enrichment,  
travel, and wellness programs

Nearly 4,500 meals served





# Recreation Partners

## **Tualatin Crawfish Festival**

Music, food, contests, and activities

## **Tualatin Heritage Center**

Ongoing programs and events

## **Browns Ferry Park**

Kayak & canoe rentals

## **Willowbrook Arts Camp**

36<sup>th</sup> Summer

## **Tigard-Tualatin Summer Lunch Program**

Community Park, Atfalati Park, Tualatin Public Library

## **YMCA and Skyhawks Camps**





# Facility Rentals

250 picnic shelter rentals,  
over 7,000 people

550 sports field  
reservations





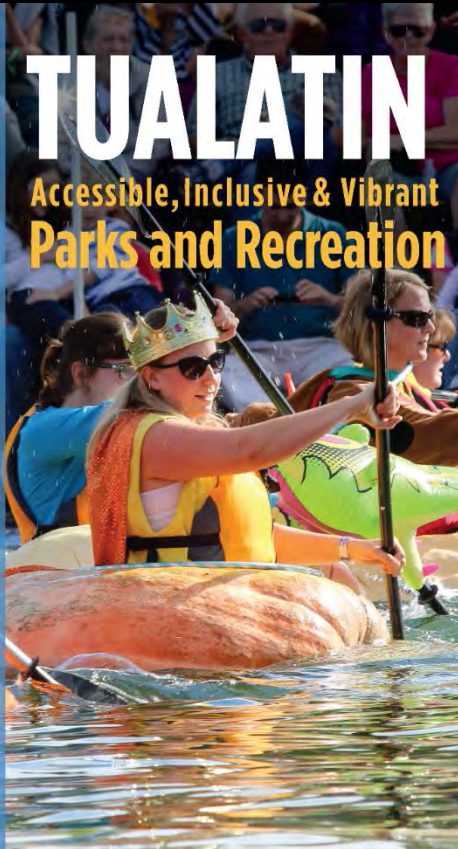
# Parks & Recreation Master Plan



## TUALATIN

Accessible, Inclusive & Vibrant  
Parks and Recreation

WHAT WILL  
TUALATIN'S  
PARKS LOOK  
LIKE IN  
**20**  
YEARS?



SHARE YOUR IDEAS! TAKE THE  
PARKS & RECREATION SURVEY

<http://bit.ly/TualatinParks>

Complete the survey for a  
chance to win a \$100 gift card!

- **Over 900 people** have participated in pop-up activities.
- **Over 8,000 emails** have been sent about the online survey.
- **Approximately 500 people** have taken the survey.
- **Twenty three** attended the first Project Advisory Committee Meeting.

\*As of August 31, 2017

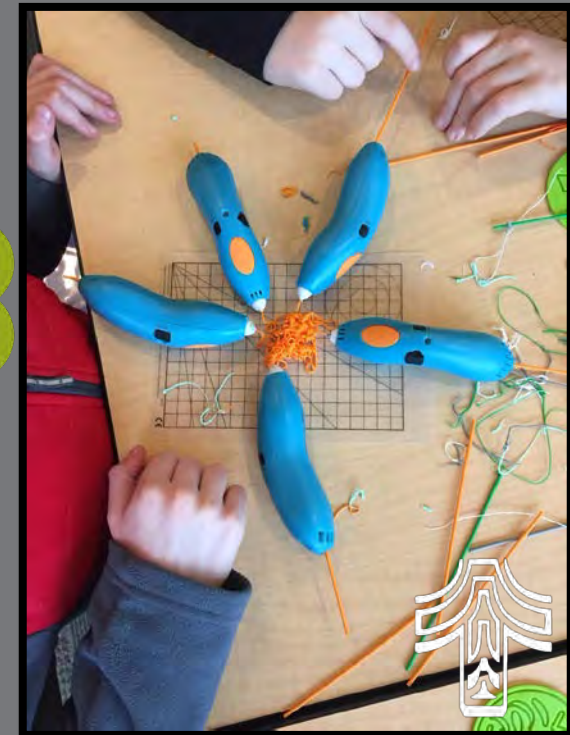




# Tualatin Library

## Fall Preview

One Thousand Books Before Kindergarten launch  
Homework Help at the library and online with Brainfuse  
Schools' Out Makerspace



# Tualatin Library

## Fall Preview



Hispanic Heritage Month  
Adulting 101 Series  
Music Programs



**Washington County**  
Cooperative Library Services





# Volunteer Services

## Fall Preview



### Put Down Roots in Tualatin

Tree planting season October - May  
Brown's Ferry Park, Tualatin Community Park,  
Tualatin River Greenway Trail

### Fall Volunteer Programs at the Library

Spruce up the Library  
Tween Takeover  
Teen Volunteer Club



# Juanita Pohl Center

## Fall Preview



### Active Aging Week

September 25 - 29

### Commit to be Fit!

September 6 - November 17

### Veterans' Recognition

### Breakfast

Thursday, November 9





# Tualatin Youth Advisory Council's

## Haunted House

October 25, 26, 27, 28

\$4 youth, \$5 adult





# West Coast Giant Pumpkin Regatta

Saturday, October 21, 2017







# 14<sup>TH</sup> ANNUAL WEST COAST GIANT PUMPKIN REGATTA

Saturday, October 21, 2017  
Lake of the Commons  
10:00am-4:00pm

Giant Pumpkin Races \* 5k  
Regatta Run\* Terminator  
Weigh Off \* Family  
Entertainment \* Pie Eating  
Contests \* Costume Contests  
\* Crafts \* Food \* and more!

**SATURDAY, OCTOBER 21, 2017, 10AM-4PM**

THE LAKE OF THE COMMONS • 8325 SW NYBERG STREET, TUALATIN, OREGON

**18<sup>TH</sup> ANNUAL TERMINATOR WEIGH OFF!  
5K REGATTA RUN**



FREE ADMISSION • [WWW.TUALATINOREGON.GOV](http://WWW.TUALATINOREGON.GOV)

Free Admission!









# Transient Lodging Taxes (TLT)

City Council Work Session  
September 25, 2017



# Tonight's Discussion

---

- Background/History of TLT in Washington County
- State Statutes and Current Rates
- Projected Local TLT Revenue and Potential Uses
- Next Steps



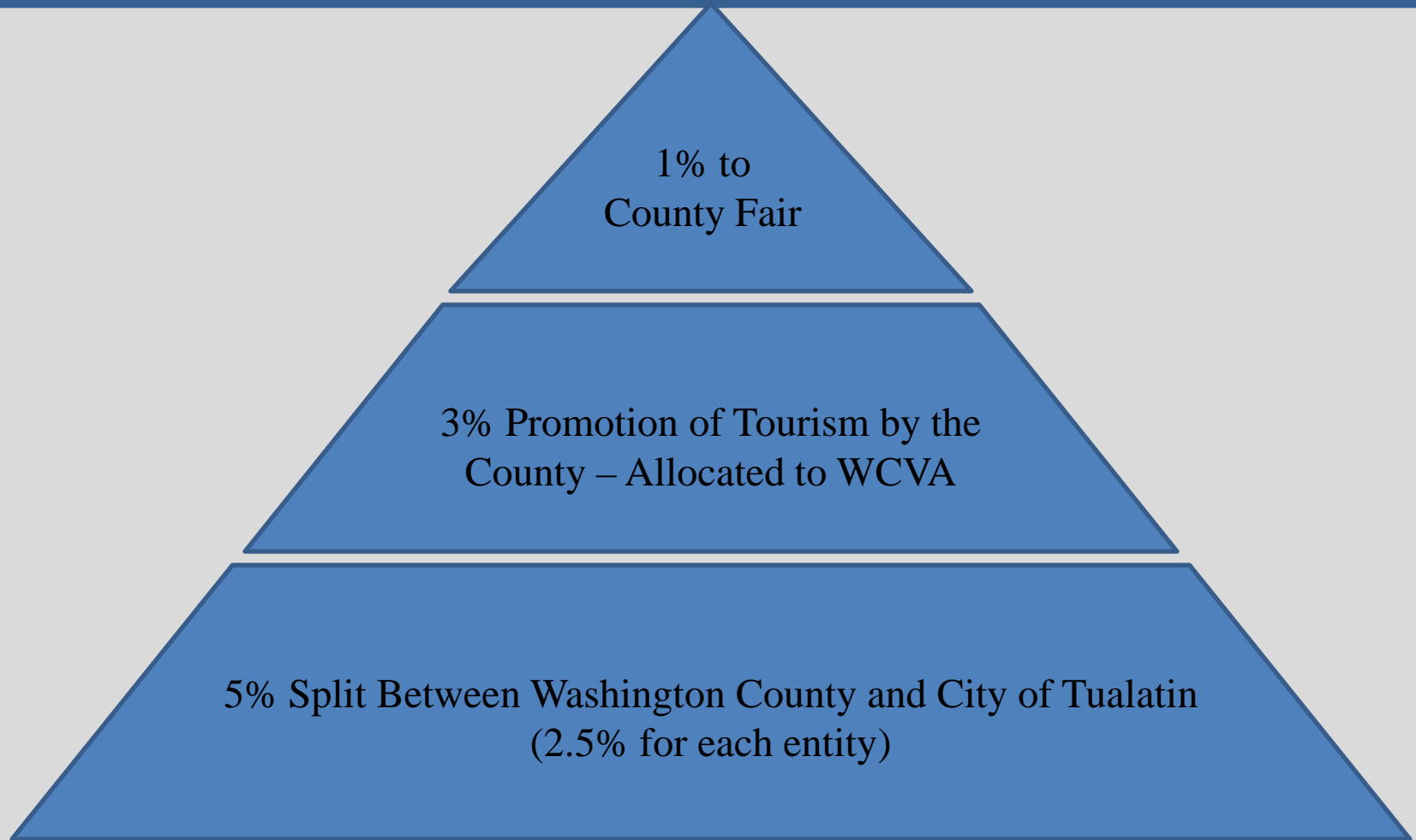
# TLT in Washington County

- Transient Lodging Tax, or TLT, is a county-wide tax on hotel-motel occupancy
- Originally adopted by Washington County in 1974 (5%)
  - Increased to 7% in 1985
  - Increased to 9% in 2006
- Washington County Code governs the tax, including allocation of the 9% tax rate





# TLT in Washington County



# TLT in Washington County

---

- IGA between Washington County and the City of Tualatin for County to collect and distribute revenues
  - Prior to July 2016, County Code did not allow cities to have their own TLT rate, without forfeiting current 2.5% allocation
  - County Commissioners adopted changes to the ordinances to allow cities to pass their own tax, to be stacked on 9% rate, retaining current allocations



# State Statutes and Rate

- HB 2267, passed in 2003, established a 1% statewide TLT and created the Oregon Tourism Commission
  - Placed restrictions on any new TLT imposed by cities or counties by requiring at least 70% of net revenue to go towards “tourism promotion” or “tourism related facilities”
- Increased statewide TLT rate to 1.8% in 2016





# Definitions in Oregon Statutes

- Tourism
  - Economic activity resulting from tourists
- Tourist
  - A person who, for business, pleasure, recreation or participation related to the arts, heritage or culture
  - Travels from their community of residence to Tualatin
    - Community of residence is more than 50 miles from Tualatin; or
    - Includes an overnight stay



# Definitions in Oregon Statutes

---

- Tourism Promotion
  - Advertising, publicizing or distributing information for purpose of attracting/welcoming tourists
  - Strategic planning to stimulate future tourism development
  - Operating tourism promotion agencies
  - Marketing special events and festivals
- Tourism-related Facility
  - Conference center, convention center or visitor information center
  - Improved real property, useful life of 10 yrs or more and has substantial purpose supporting/attracting tourists



# Washington County Cities with Local Rates

City	Local Rate	Total Rate
Beaverton	4.00%	14.8%
Hillsboro	3.00%	13.8%
Tigard	2.50%	13.3%

Other City's Rates :

City	Total Rate
Portland	15.3%
Lake Oswego	13.8%
Wilsonville	10.8% (Wash Co.) 12.8% (Clack Co.)





# Projected Revenue – Local Rate

	2.5%	3.0%	4.0%
Total	\$300,000	\$360,000	\$480,000
Restricted - Tourism	\$210,000	\$252,000	\$336,000
Unrestricted	\$90,000	\$108,000	\$144,000



# Possible Uses of Revenues

---

- Trail Projects
  - Ice Age Tonquin Trail
  - Ice Age Discovery Trail Visitors Center
- Tualatin Historical Society/Heritage Center Programs
- Tualatin Art Walk
- Chamber of Commerce/Visitors Center
- Special Events
  - Pumpkin Regatta
  - ArtSplash
  - Crawfish Festival
- Tourism Promotion



# Next Steps

---

- Direction from Council on whether or not to explore a local TLT
- If so, we will:
  - Meet with hoteliers and Washington County Visitors Association
  - Continue to develop potential uses
  - Bring ordinance to Council
  - Update IGA with Washington County

