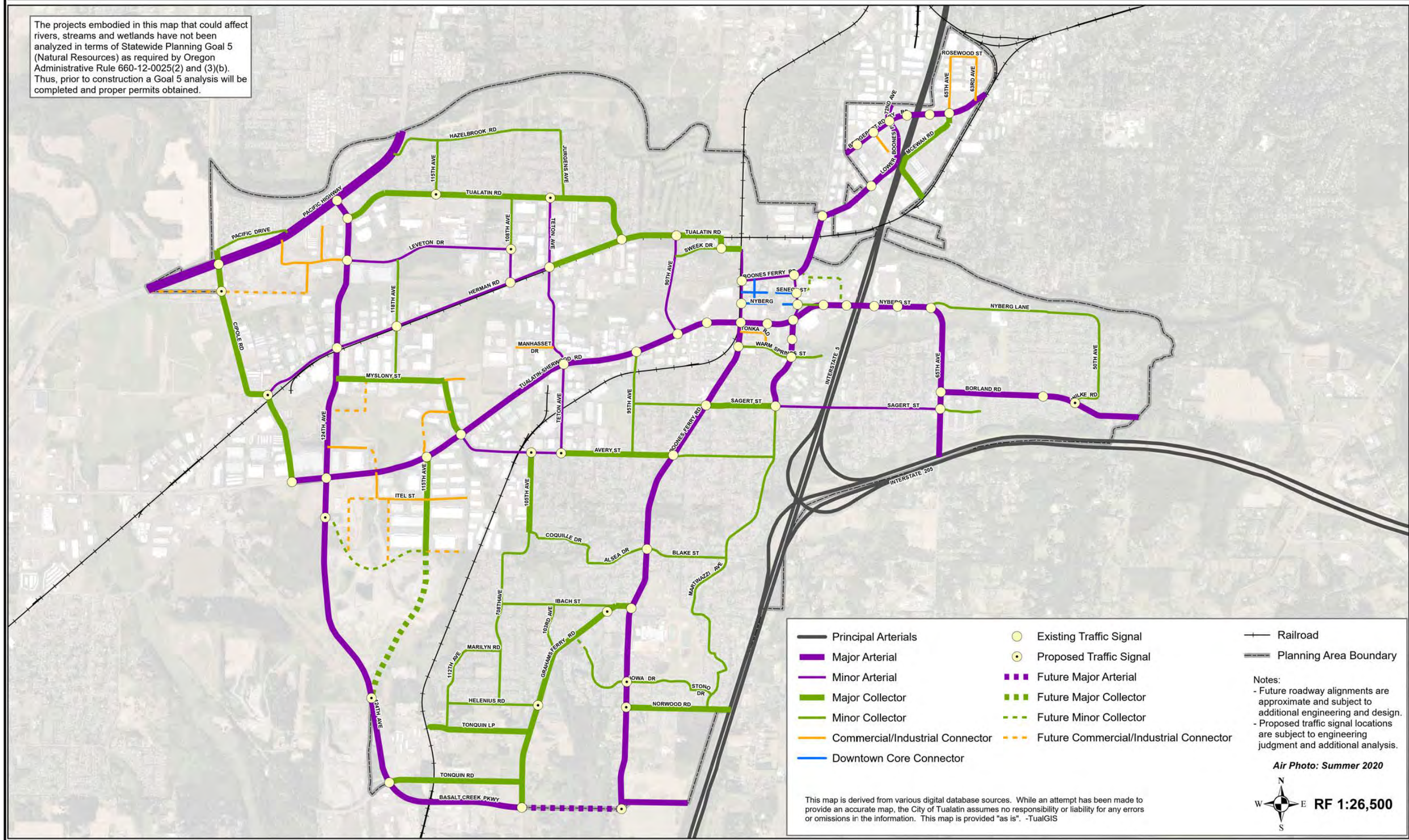






MAPS



Map 8-1: Functional Classification and Traffic Signal Plan


The projects embodied in this map that could affect rivers, streams and wetlands have not been analyzed in terms of Statewide Planning Goal 5 (Natural Resources) as required by Oregon Administrative Rule 660-12-0025(2) and (3)(b). Thus, prior to construction a Goal 5 analysis will be completed and proper permits obtained.



 Principal Arterials	 Existing Traffic Signal	 Railroad
 Major Arterial	 Proposed Traffic Signal	 Planning Area Boundary
 Minor Arterial	 Future Major Arterial	
 Major Collector	 Future Major Collector	
 Minor Collector	 Future Minor Collector	
 Commercial/Industrial Connector	 Future Commercial/Industrial Connector	
 Downtown Core Connector		

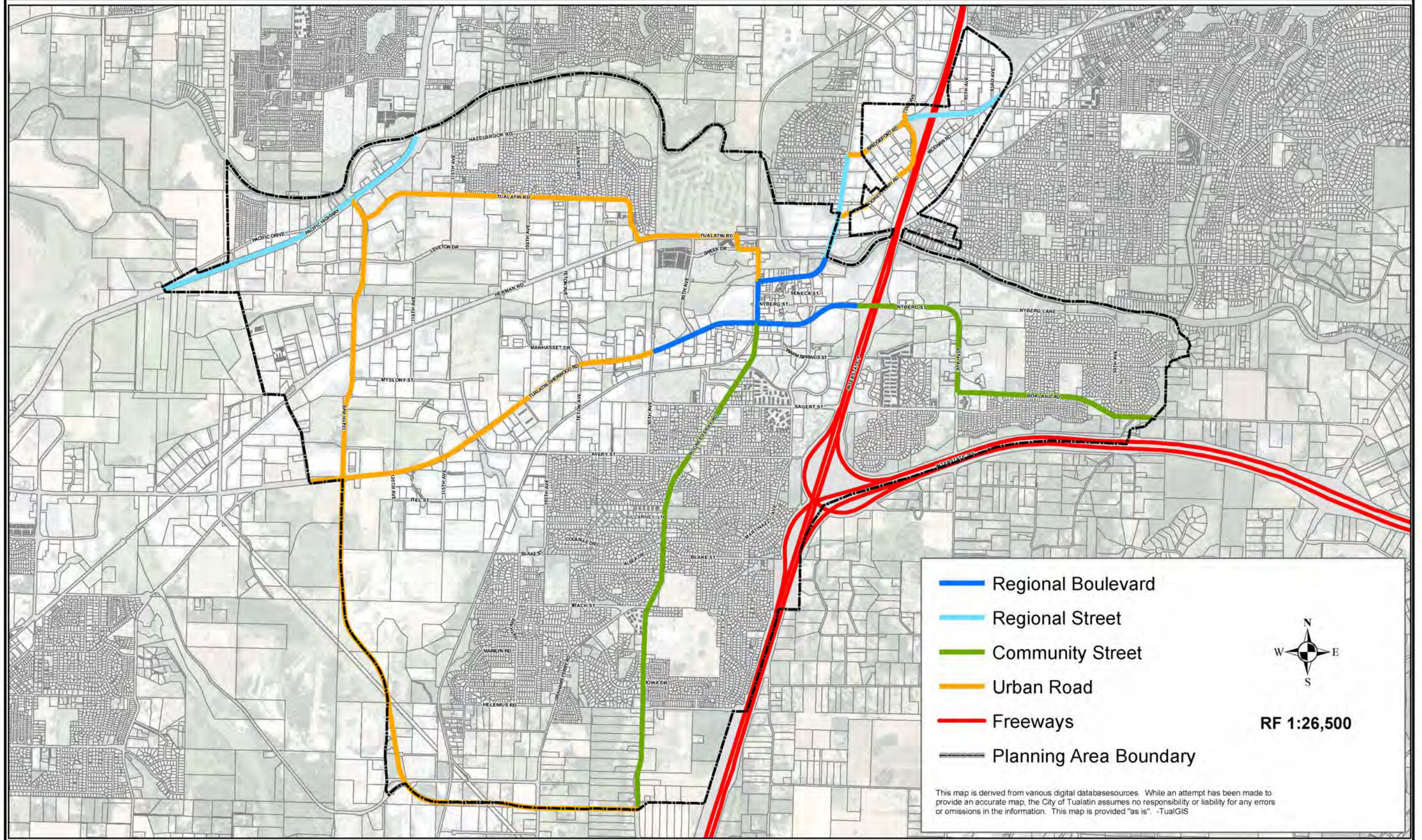
Notes:
 - Future roadway alignments are approximate and subject to additional engineering and design.
 - Proposed traffic signal locations are subject to engineering judgment and additional analysis.

Air Photo: Summer 2020

 RF 1:26,500

This map is derived from various digital database sources. While an attempt has been made to provide an accurate map, the City of Tualatin assumes no responsibility or liability for any errors or omissions in the information. This map is provided "as is". -TualGIS

Map 8-2: Metro Regional Street Design System



Map 8-3: Local Street Plan

- Local Street Connection
- Planning Area Boundary

Air Photo: Summer 2022

Note:
Future roadway alignments are approximate and subject to additional engineering and design.

This map is derived from various digital databasesources. While an attempt has been made to provide an accurate map, the City of Tualatin assumes no responsibility or liability for any errors or omissions in the information. This map is provided "as is". -TualGIS



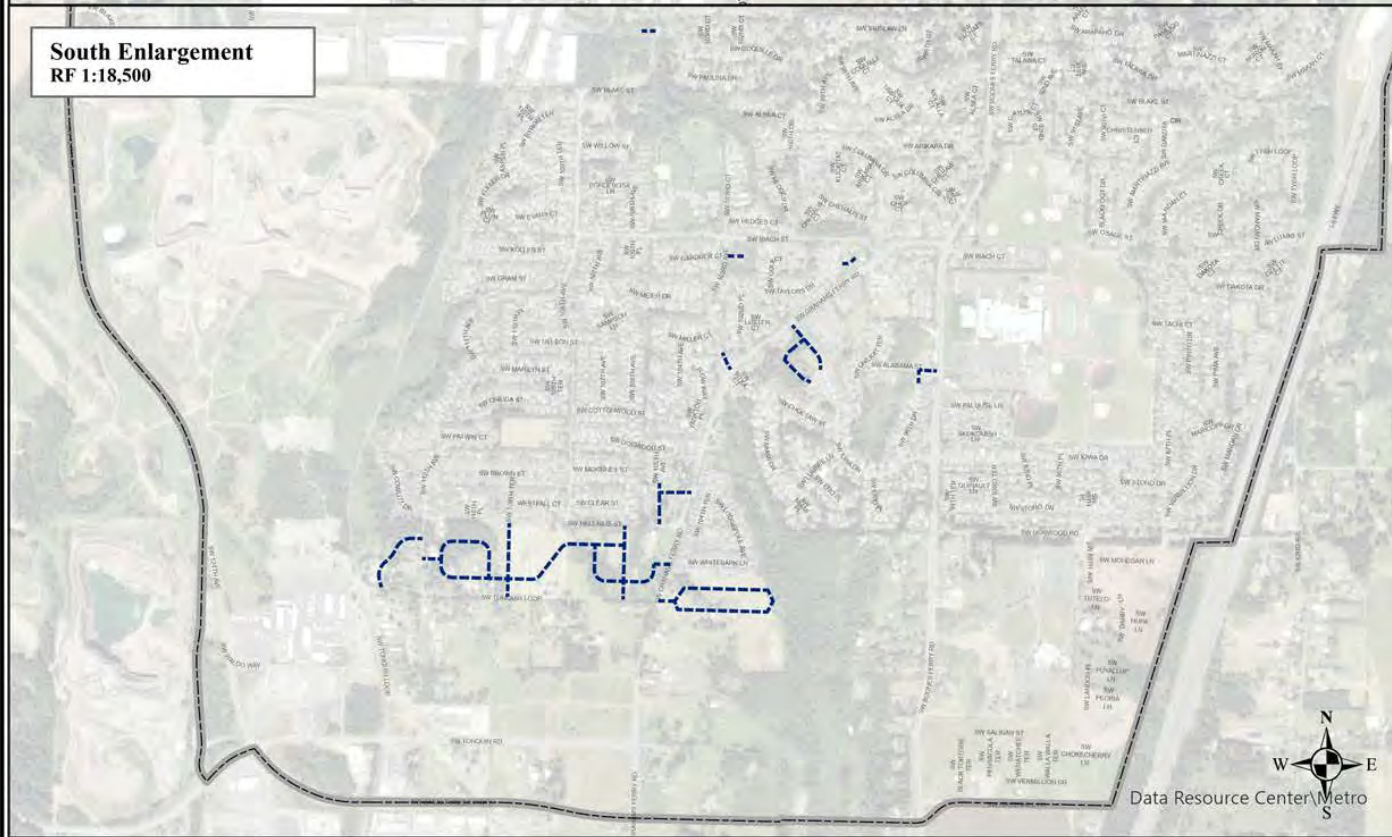
Northwest Enlargement
RF 1:8,000



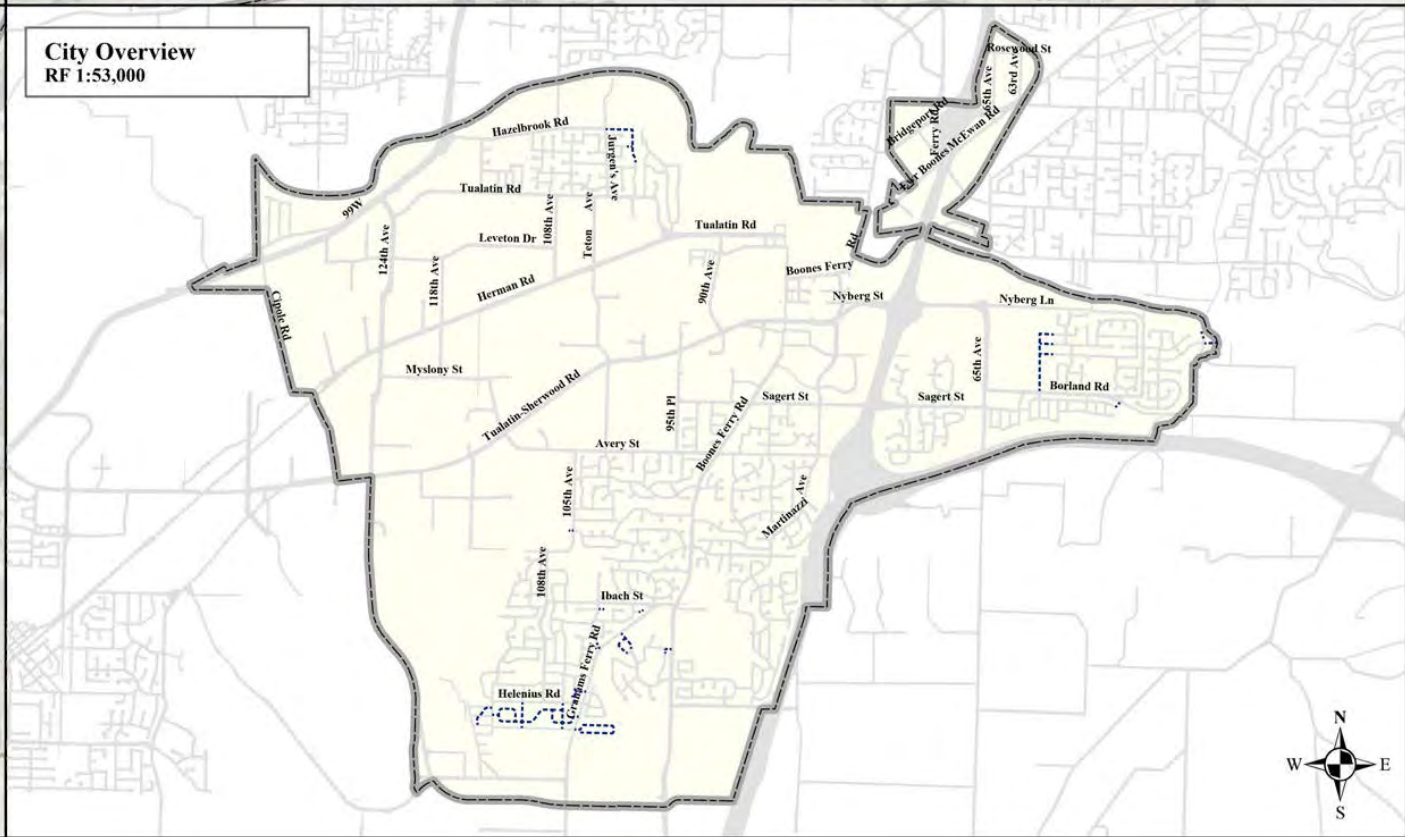
East Enlargement
RF 1:9,000



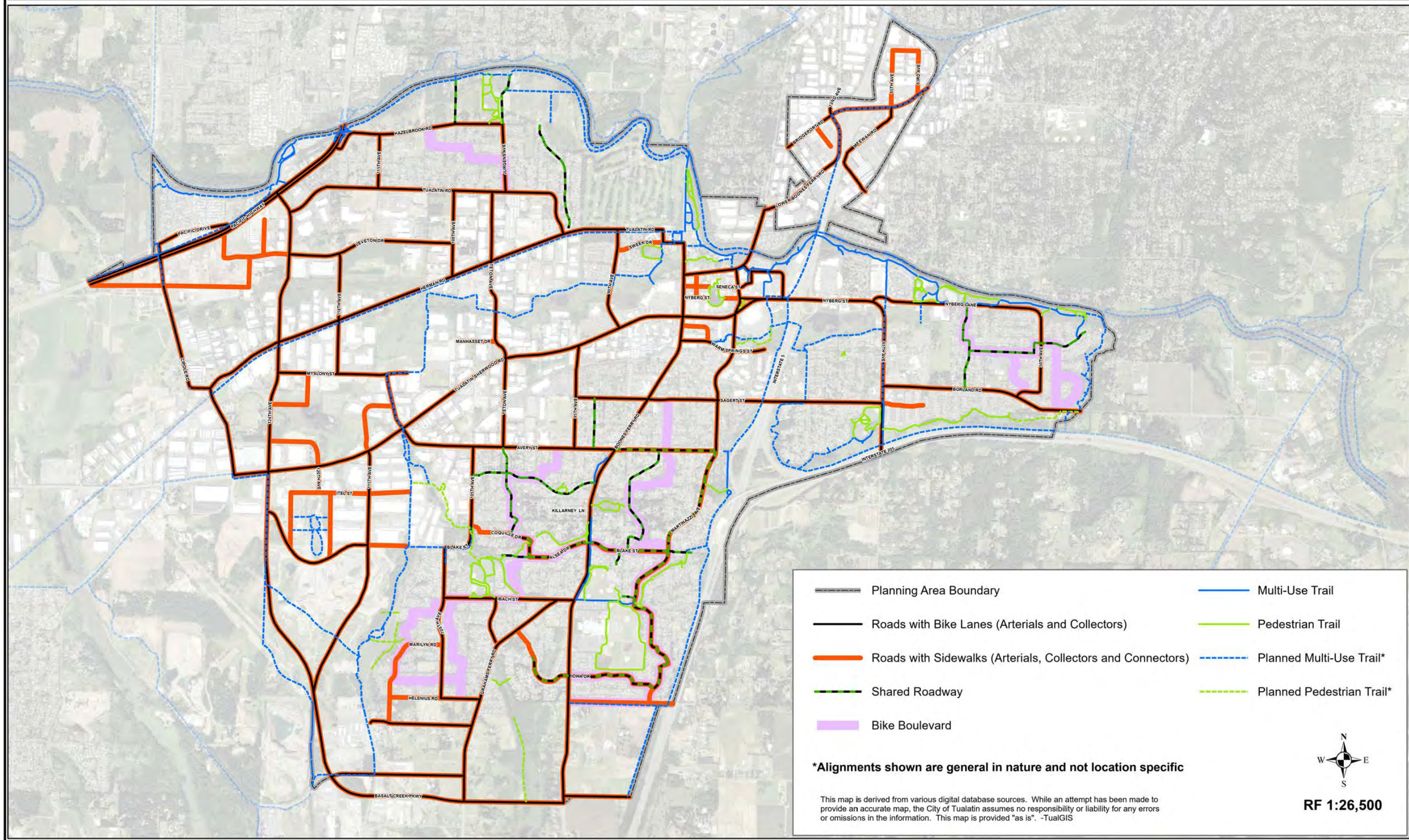
South Enlargement
RF 1:18,500



City Overview
RF 1:53,000



Map 8-4: Bicycle and Pedestrian Plan



- Planning Area Boundary
- Roads with Bike Lanes (Arterials and Collectors)
- Roads with Sidewalks (Arterials, Collectors and Connectors)
- Shared Roadway
- Bike Boulevard
- Multi-Use Trail
- Pedestrian Trail
- Planned Multi-Use Trail*
- Planned Pedestrian Trail*

***Alignments shown are general in nature and not location specific**

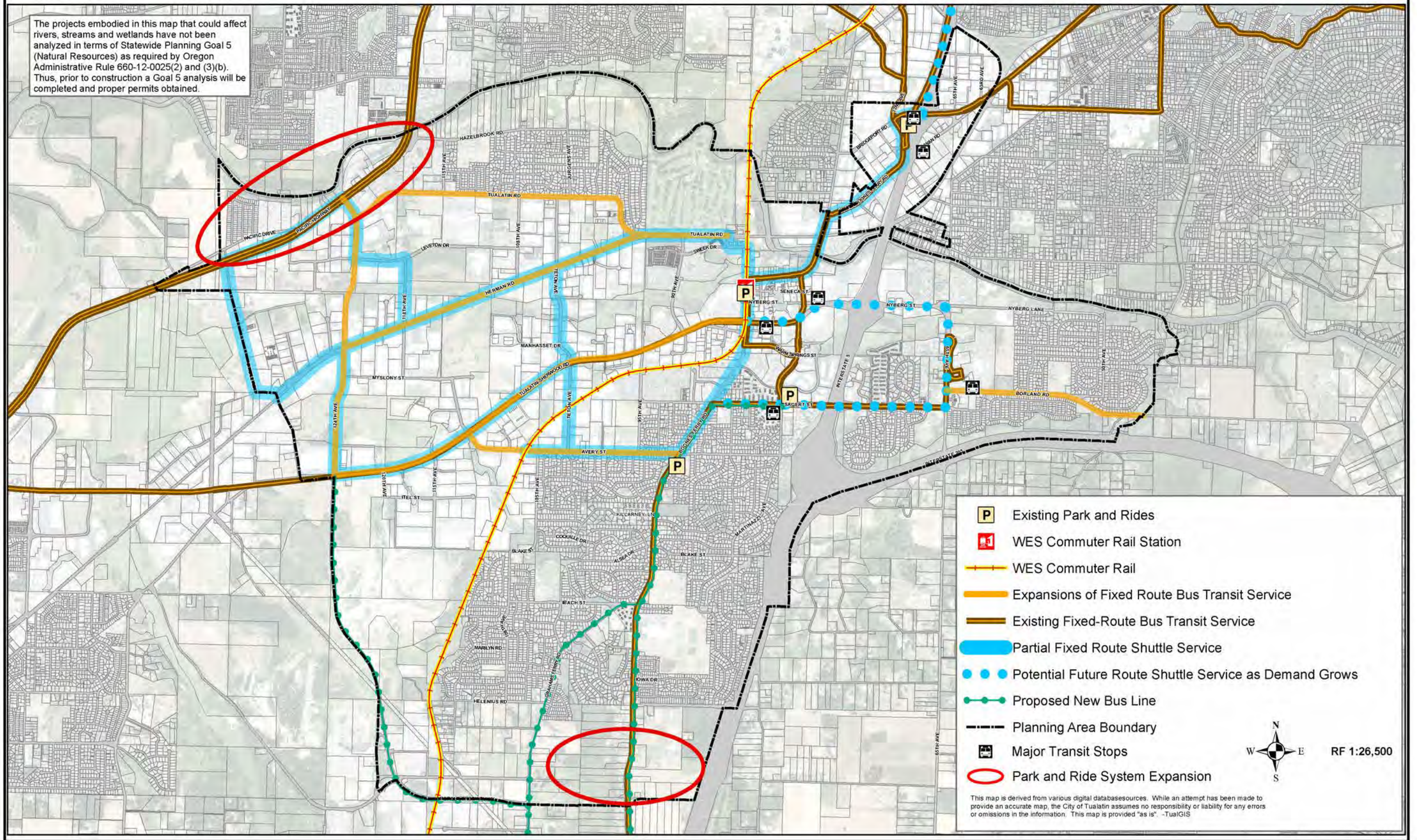
This map is derived from various digital database sources. While an attempt has been made to provide an accurate map, the City of Tualatin assumes no responsibility or liability for any errors or omissions in the information. This map is provided "as is". -TualGIS



RF 1:26,500

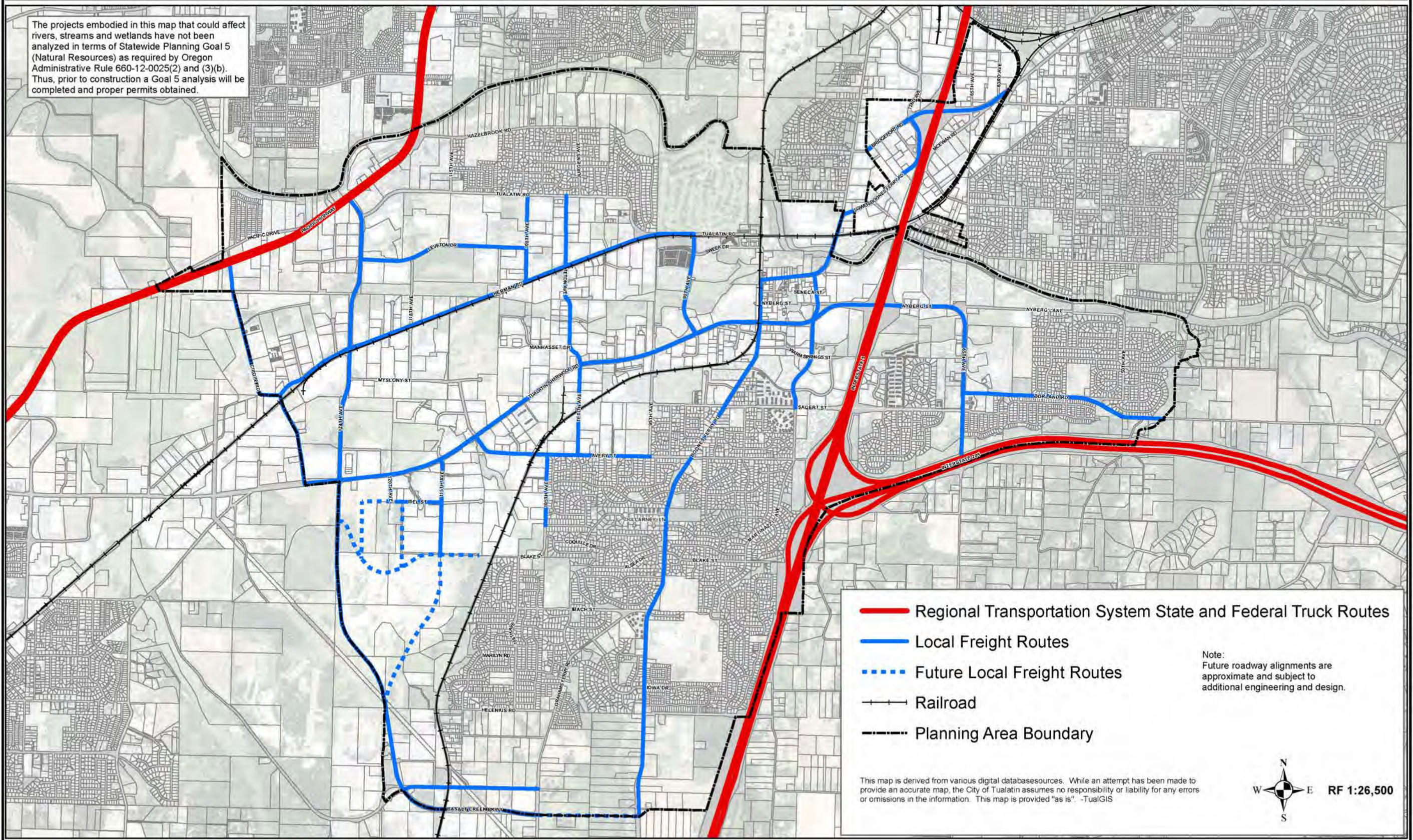
Map 8-5: Tualatin Transit Plan

The projects embodied in this map that could affect rivers, streams and wetlands have not been analyzed in terms of Statewide Planning Goal 5 (Natural Resources) as required by Oregon Administrative Rule 660-12-0025(2) and (3)(b). Thus, prior to construction a Goal 5 analysis will be completed and proper permits obtained.



Map 8-6: Freight Routes

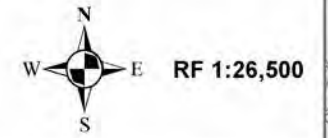
The projects embodied in this map that could affect rivers, streams and wetlands have not been analyzed in terms of Statewide Planning Goal 5 (Natural Resources) as required by Oregon Administrative Rule 660-12-0025(2) and (3)(b). Thus, prior to construction a Goal 5 analysis will be completed and proper permits obtained.

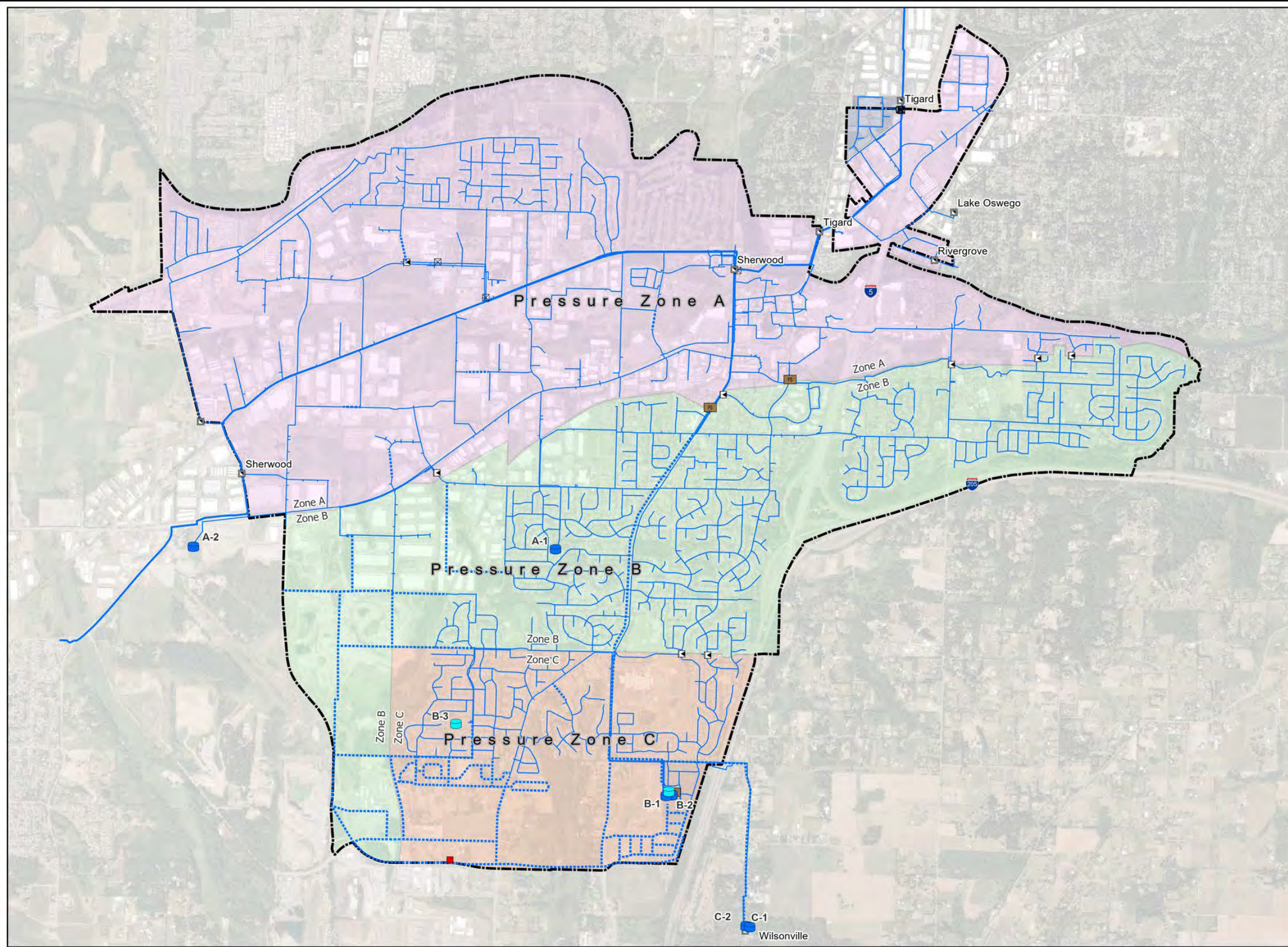
















- Regional Transportation System State and Federal Truck Routes
- Local Freight Routes
- ⋯ Future Local Freight Routes
- Railroad
- Planning Area Boundary

Note:
Future roadway alignments are approximate and subject to additional engineering and design.

This map is derived from various digital databasesources. While an attempt has been made to provide an accurate map, the City of Tualatin assumes no responsibility or liability for any errors or omissions in the information. This map is provided "as is". -TualGIS





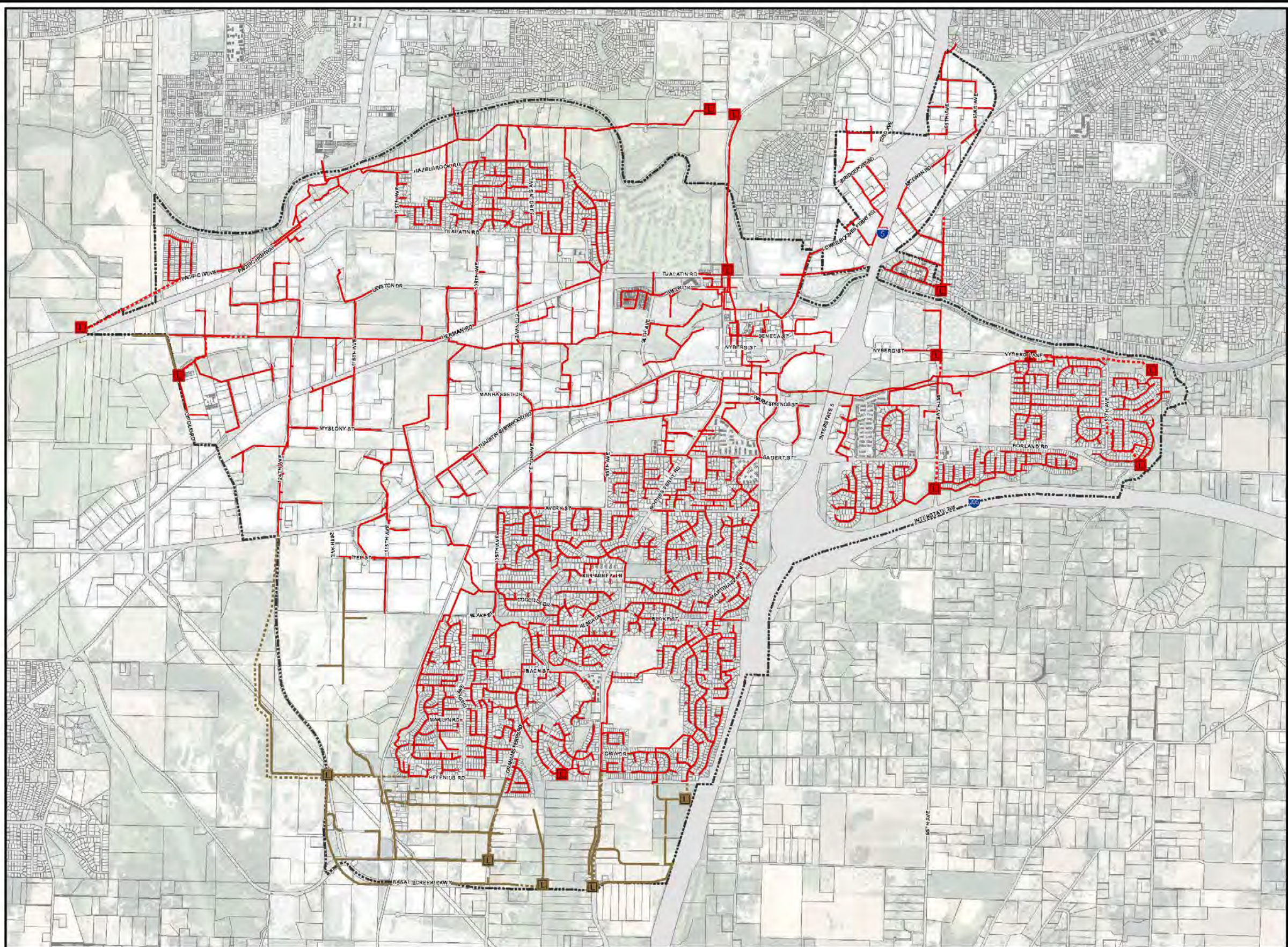
-  Pump Stations
-  Pressure Reducing-Sustaining Valve
-  Pressure Reducing Valve
-  Future Pressure Reducing Valve
-  Water System Interties
-  Existing Reservoirs
-  Future Reservoirs
-  Transmission Lines
-  Distribution System
-  Future System Improvements
-  A-Level
-  B-Level
-  C-Level
-  Bridgeport










RF 1:26,500

This map is derived from various digital database sources. While an attempt has been made to provide an accurate map, the City of Tualatin assumes no responsibility or liability for any errors or omissions in the information. This map is provided "as is". -TualGIS

City of Tualatin
Sewer System Master Plan
Map 9-2



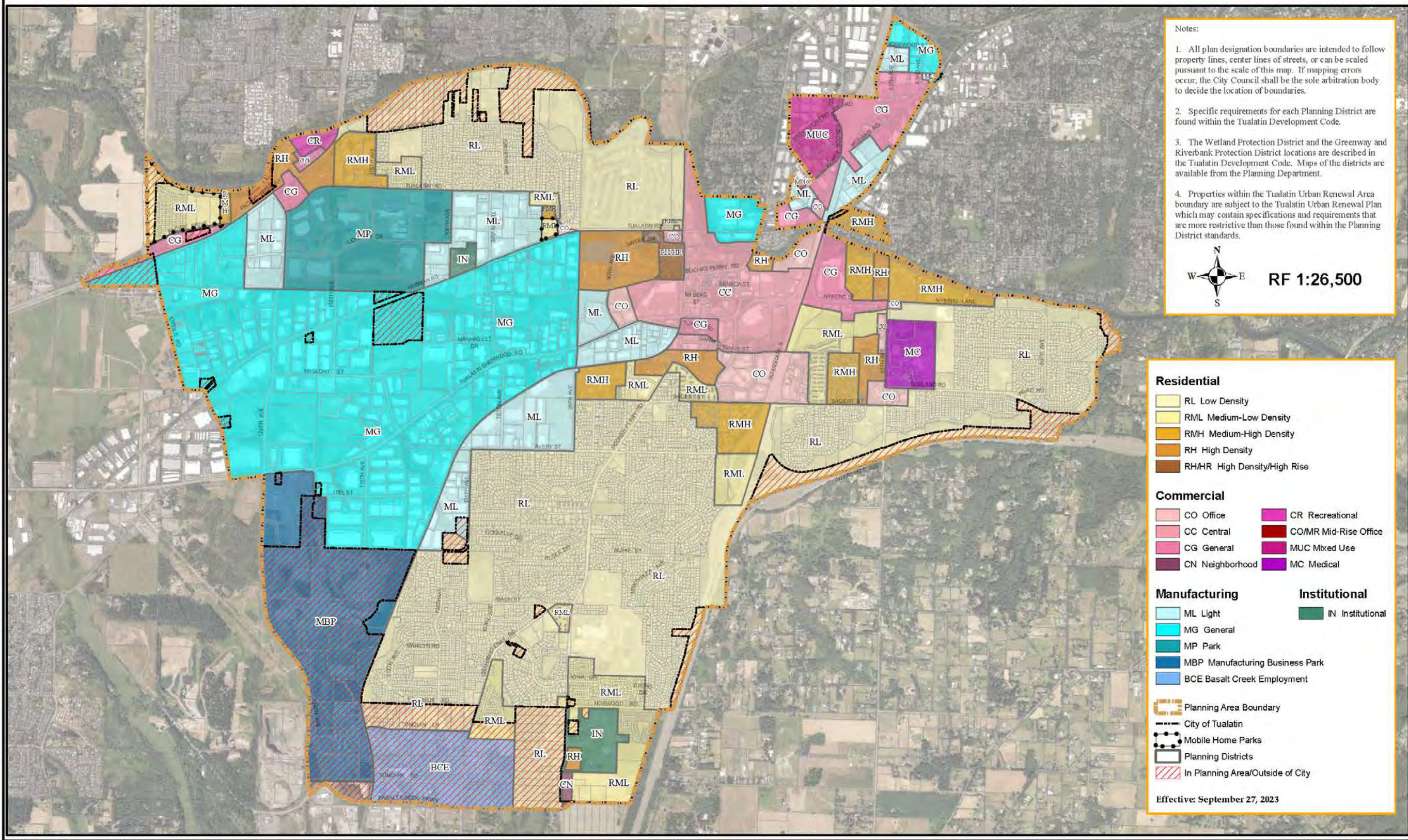
-  Conceptual Lift Station
-  Lift Station
-  Gravity Pipe
-  Force Main
-  Conceptual Gravity Pipe
-  Conceptual Force Main
-  Planning Area Boundary



RF 1:26,500

This map is derived from various digital database sources. While an attempt has been made to provide an accurate map, the City of Tualatin assumes no responsibility or liability for any errors or omissions in the information. This map is provided "as is" - TUALGIS

Map 10-1 Comprehensive Plan Map



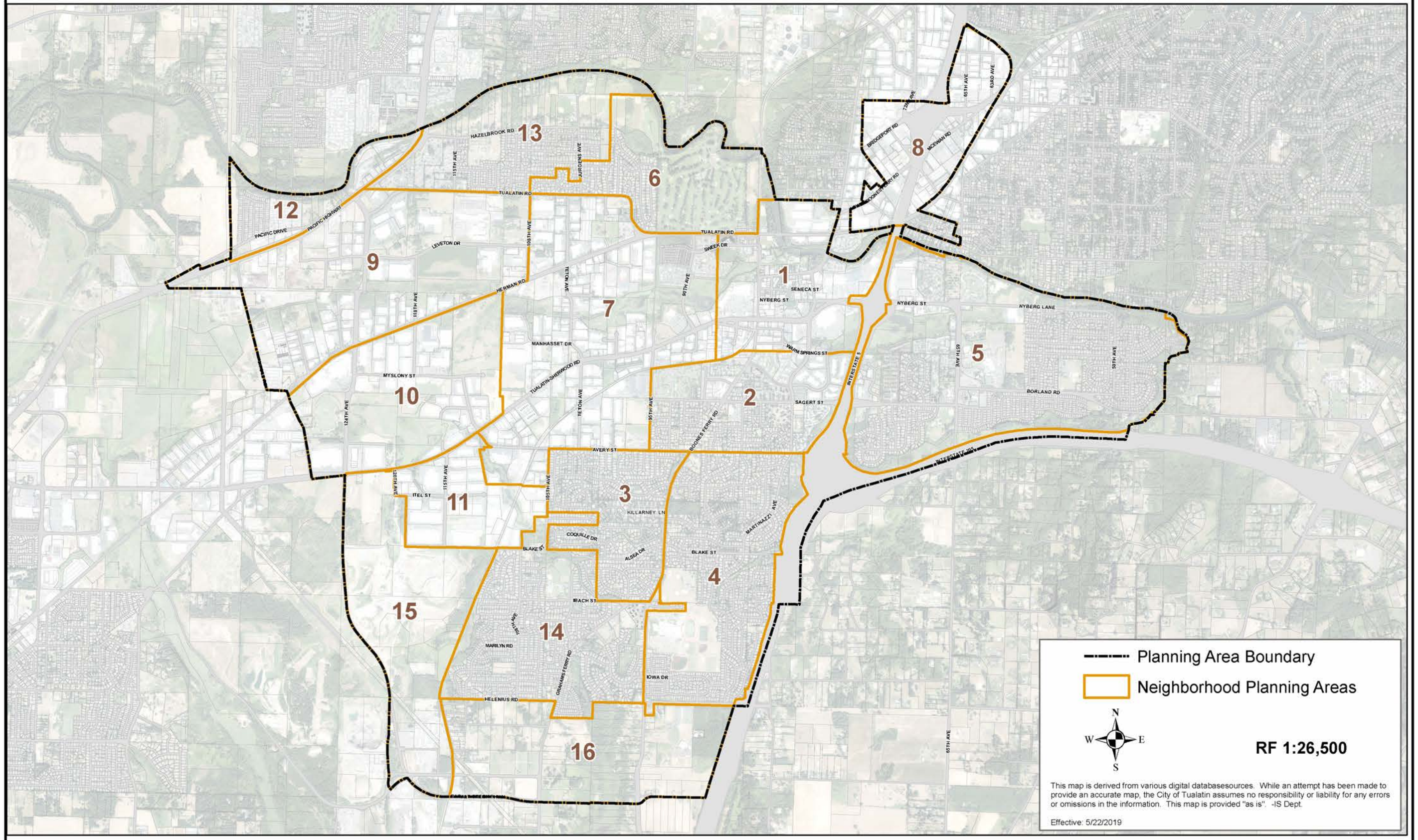
Notes:

1. All plan designation boundaries are intended to follow property lines, center lines of streets, or can be scaled pursuant to the scale of this map. If mapping errors occur, the City Council shall be the sole arbitration body to decide the location of boundaries.
2. Specific requirements for each Planning District are found within the Tualatin Development Code.
3. The Wetland Protection District and the Greenway and Riverbank Protection District locations are described in the Tualatin Development Code. Maps of the districts are available from the Planning Department.
4. Properties within the Tualatin Urban Renewal Area boundary are subject to the Tualatin Urban Renewal Plan which may contain specifications and requirements that are more restrictive than those found within the Planning District standards.

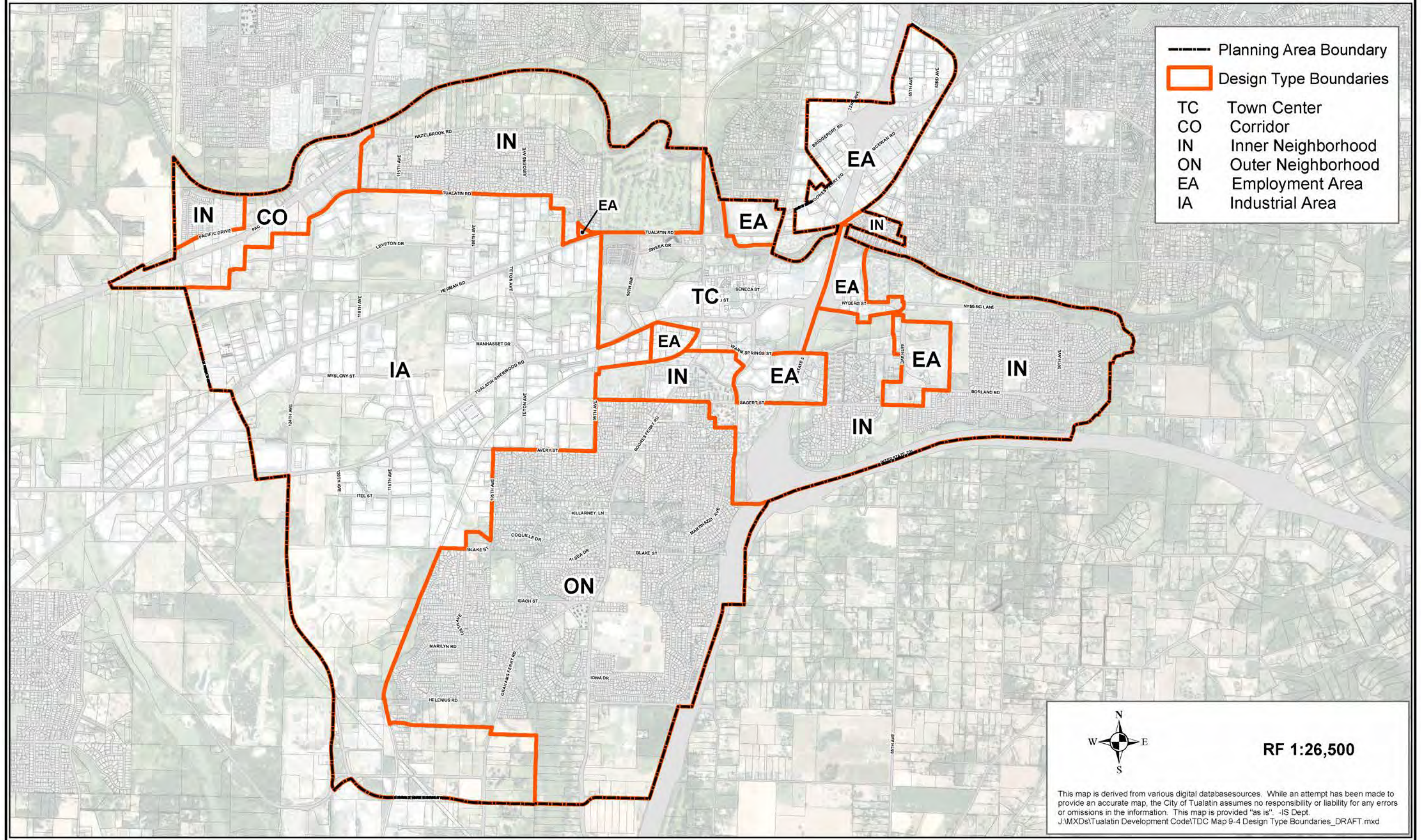
RF 1:26,500

Residential	
RL Low Density	
RML Medium-Low Density	
RMH Medium-High Density	
RH High Density	
RH/HR High Density/High Rise	
Commercial	
CO Office	CR Recreational
CC Central	CO/MR Mid-Rise Office
CG General	MUC Mixed Use
CN Neighborhood	MC Medical
Manufacturing	
ML Light	
MG General	
MP Park	
MBP Manufacturing Business Park	
BCE Basalt Creek Employment	
Institutional	
	IN Institutional
Planning Area Boundary City of Tualatin Mobile Home Parks Planning Districts In Planning Area/Outside of City	
Effective: September 27, 2023	

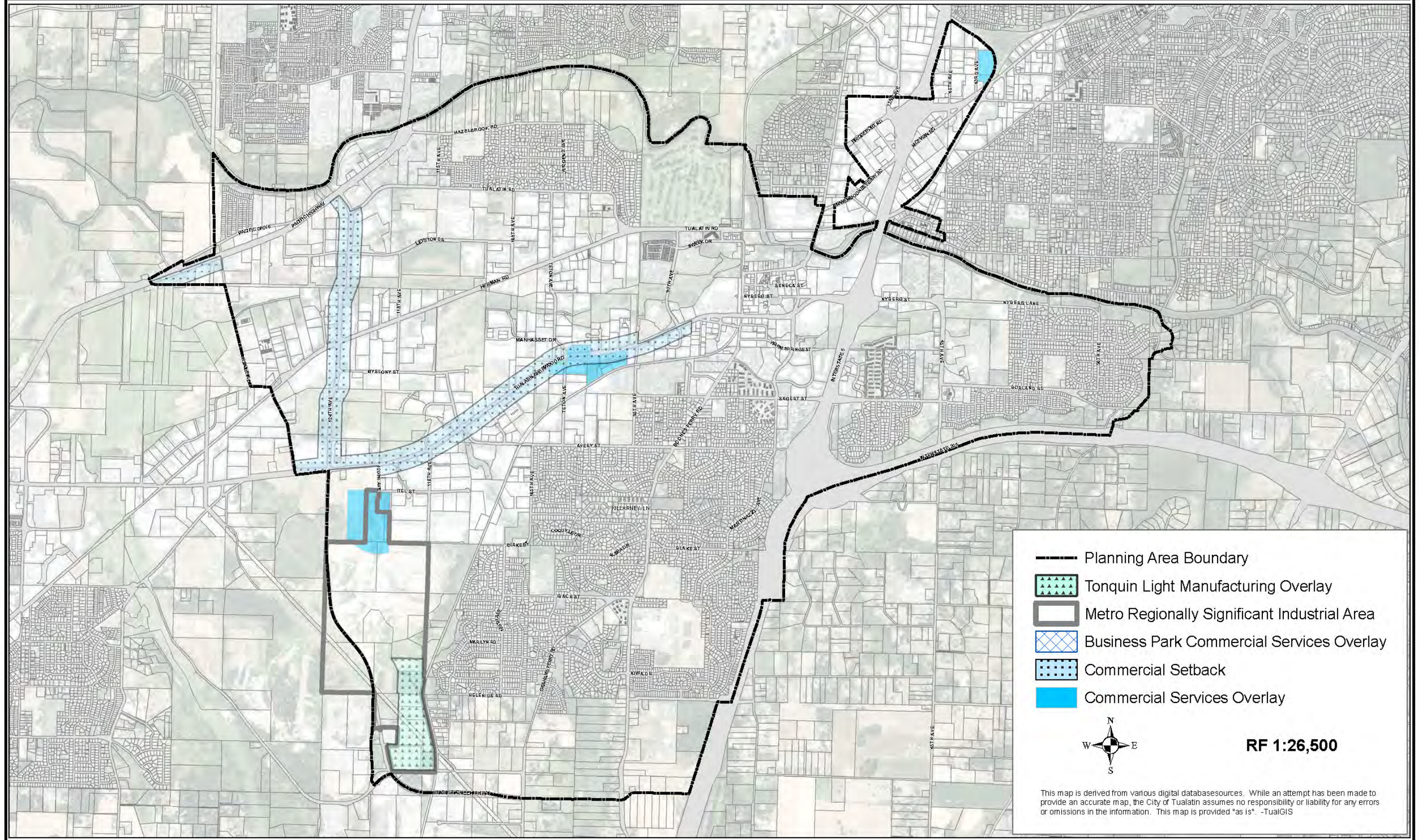
Map 10-2: Neighborhood Planning Areas



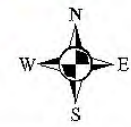
Map 10-4: Design Type Boundaries



Map 10-5: Commercial Setback & Commercial Services Overlay



- Planning Area Boundary
- Tonquin Light Manufacturing Overlay
- Metro Regionally Significant Industrial Area
- Business Park Commercial Services Overlay
- Commercial Setback
- Commercial Services Overlay



RF 1:26,500

This map is derived from various digital databasesources. While an attempt has been made to provide an accurate map, the City of Tualatin assumes no responsibility or liability for any errors or omissions in the information. This map is provided "as is". -TualGIS

Map 10-6: Conditional Use for Agricultural Animals

