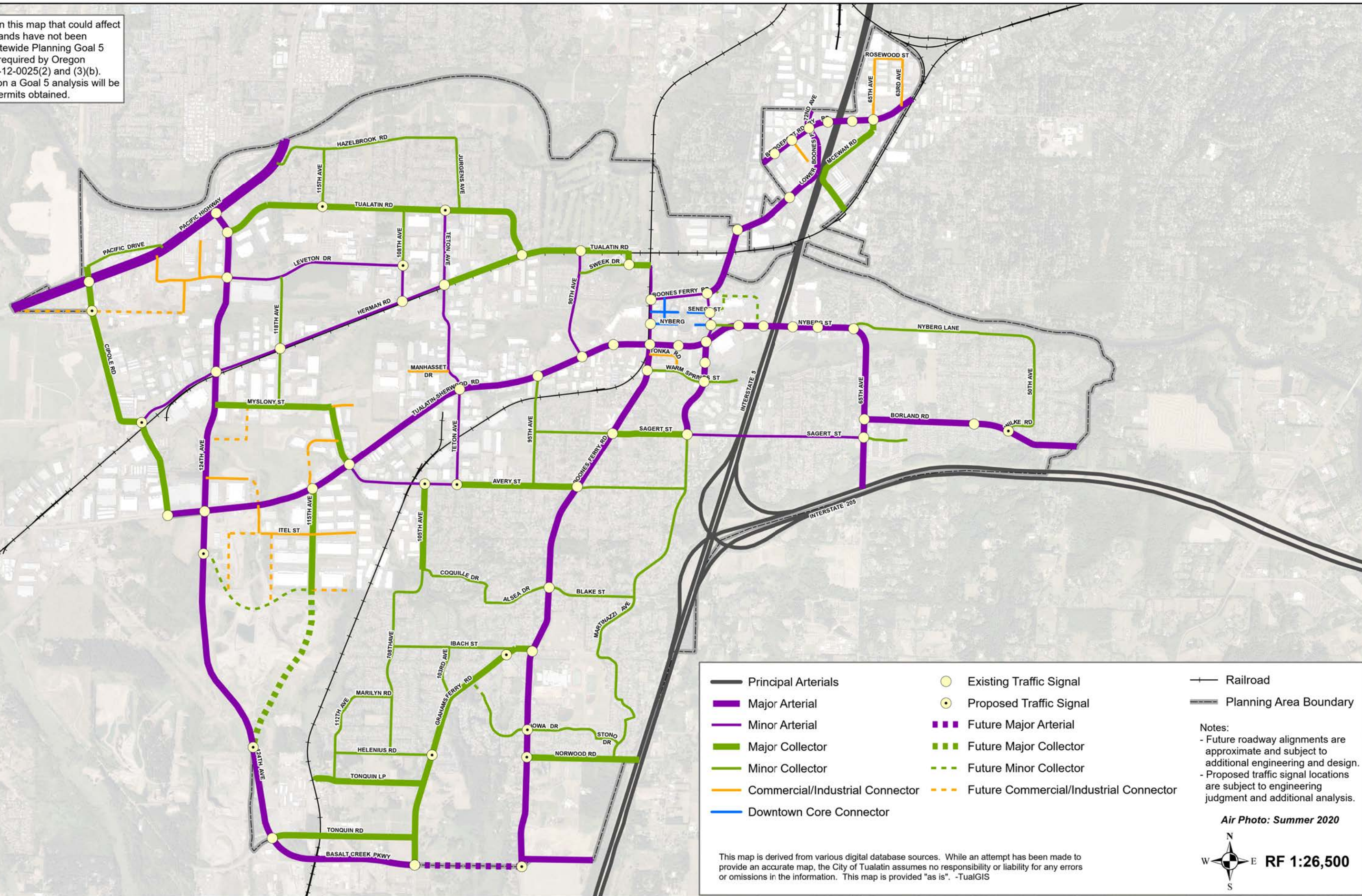




Map 8-1: Functional Classification and Traffic Signal Plan

The projects embodied in this map that could affect rivers, streams and wetlands have not been analyzed in terms of Statewide Planning Goal 5 (Natural Resources) as required by Oregon Administrative Rule 660-12-0025(2) and (3)(b). Thus, prior to construction a Goal 5 analysis will be completed and proper permits obtained.



Map 8-3: Local Street Plan

-  Local Street Connection
-  Planning Area Boundary

Air Photo: Summer 2022

Note:
Future roadway alignments are approximate and subject to additional engineering and design.

This map is derived from various digital databasesources. While an attempt has been made to provide an accurate map, the City of Tualatin assumes no responsibility or liability for any errors or omissions in the information. This map is provided "as is". -TualGIS



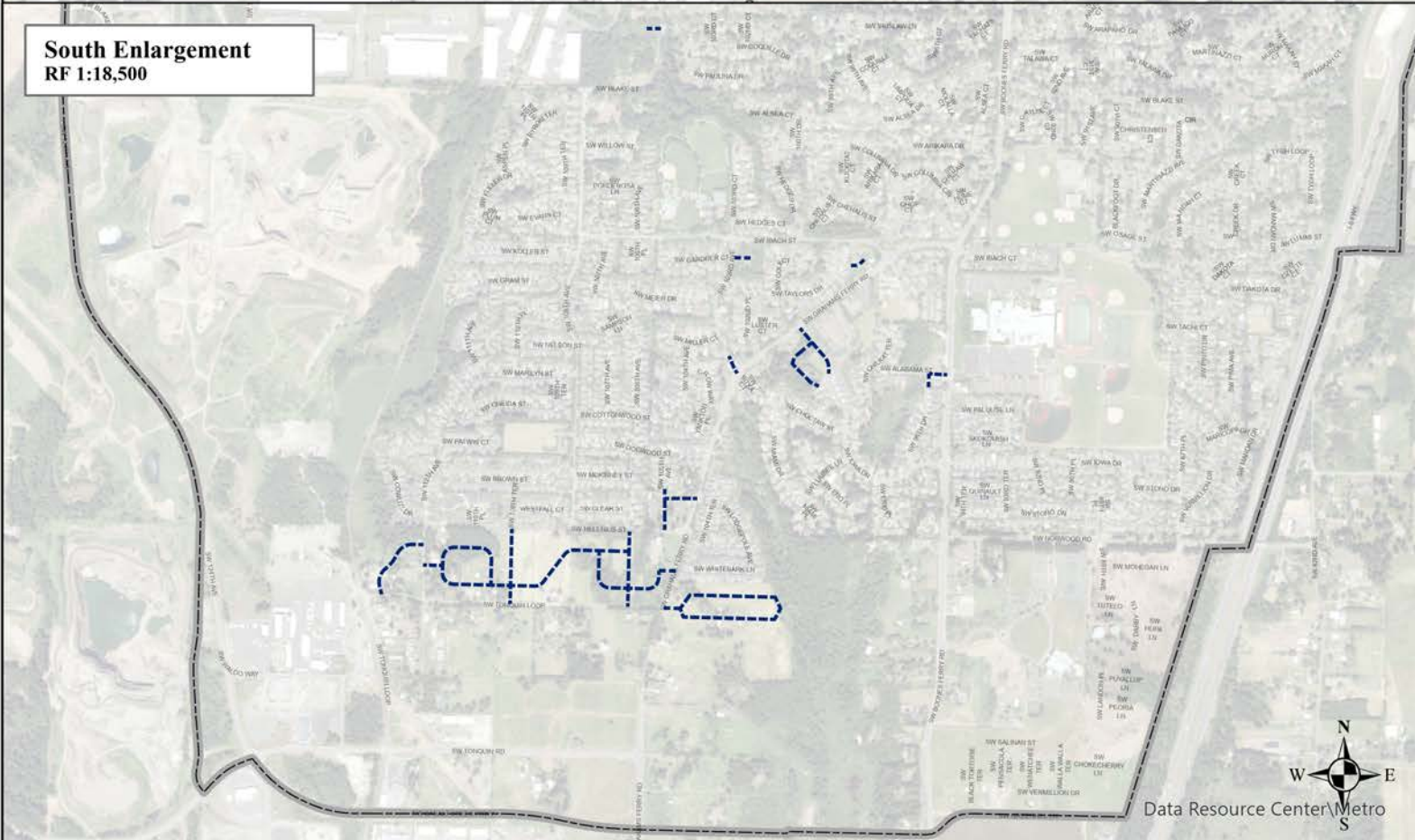
Northwest Enlargement
RF 1:8,000



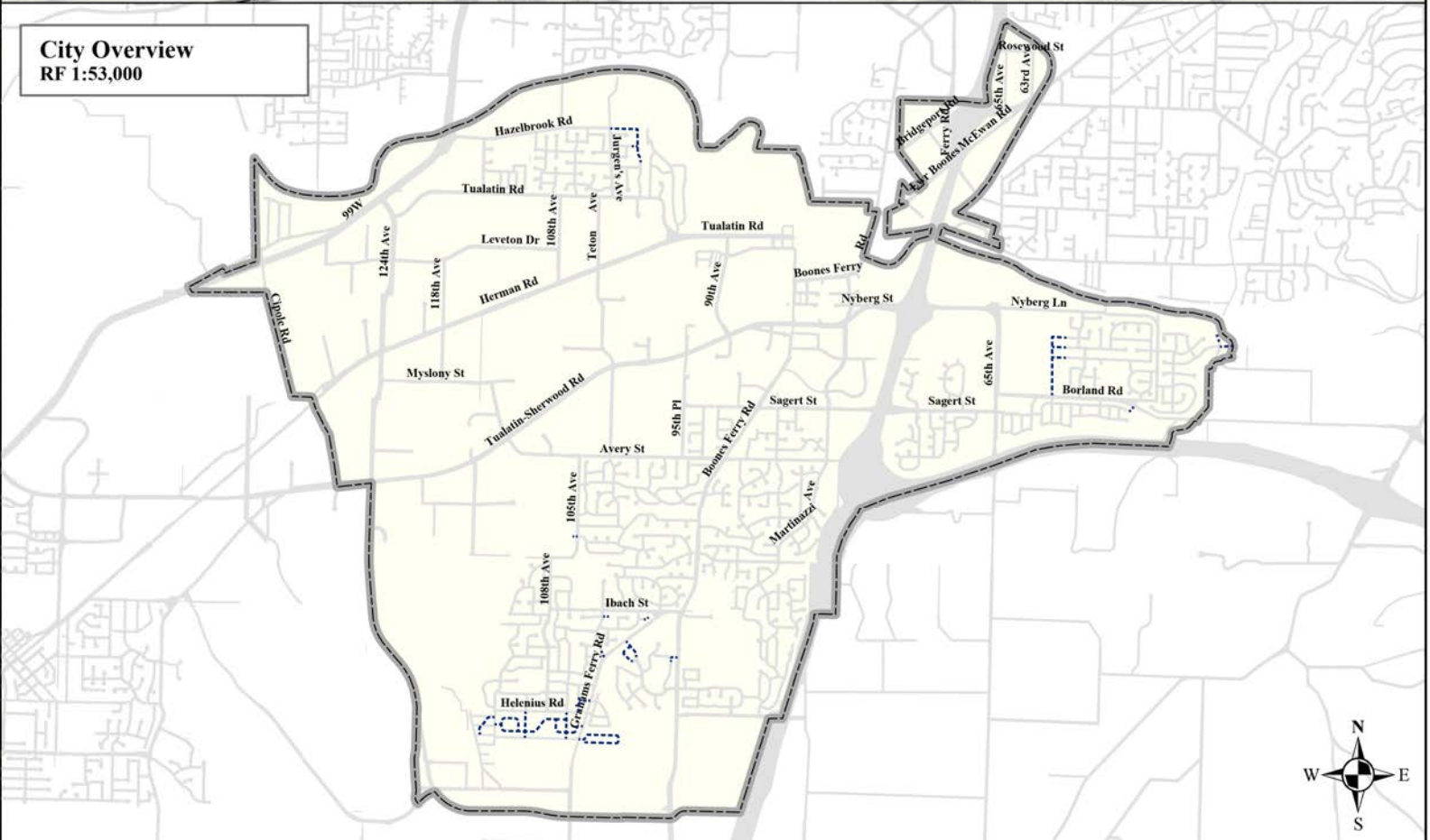
East Enlargement
RF 1:9,000



South Enlargement
RF 1:18,500



City Overview
RF 1:53,000

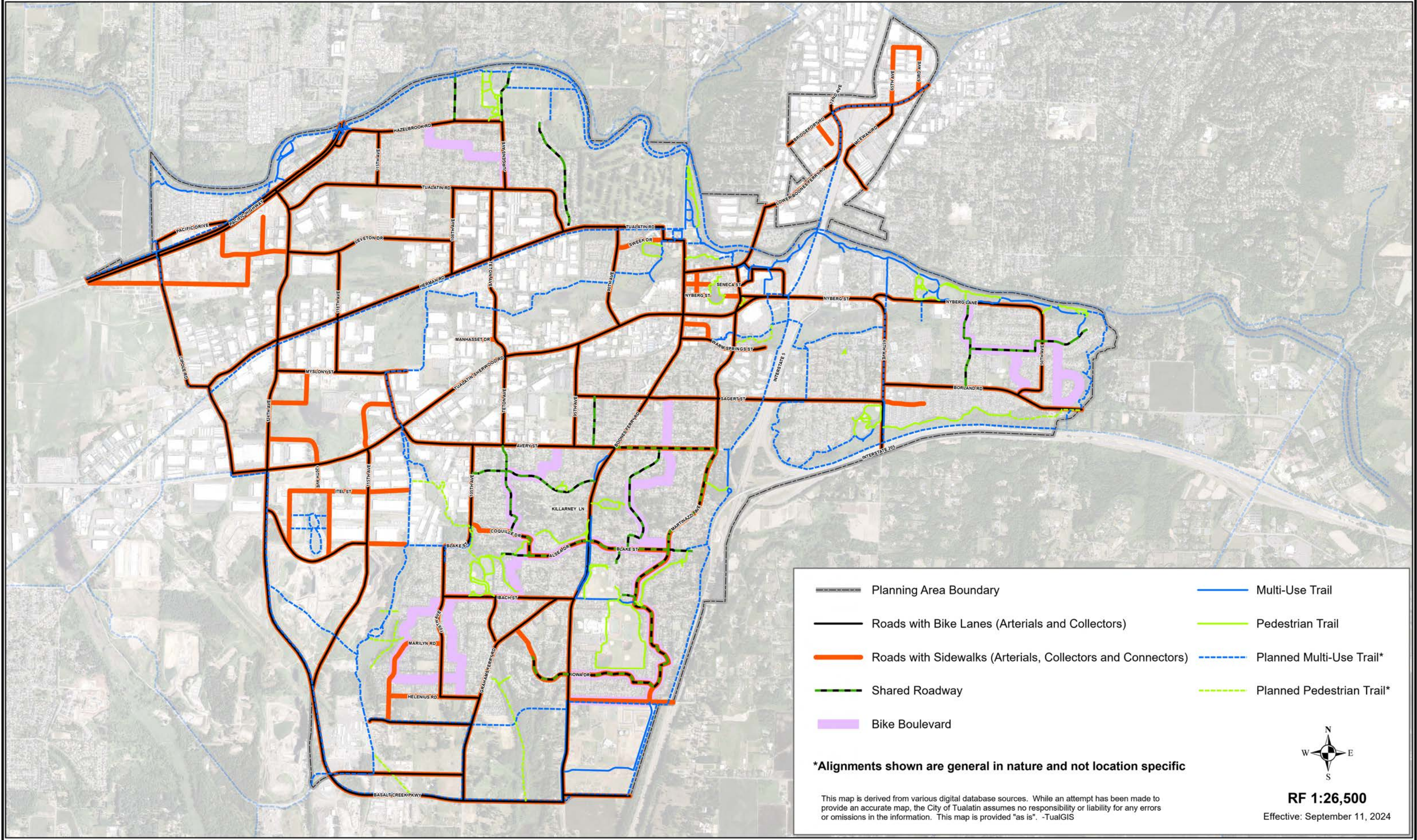


Data Resource Center/Metro

Data Resource Center/Metro

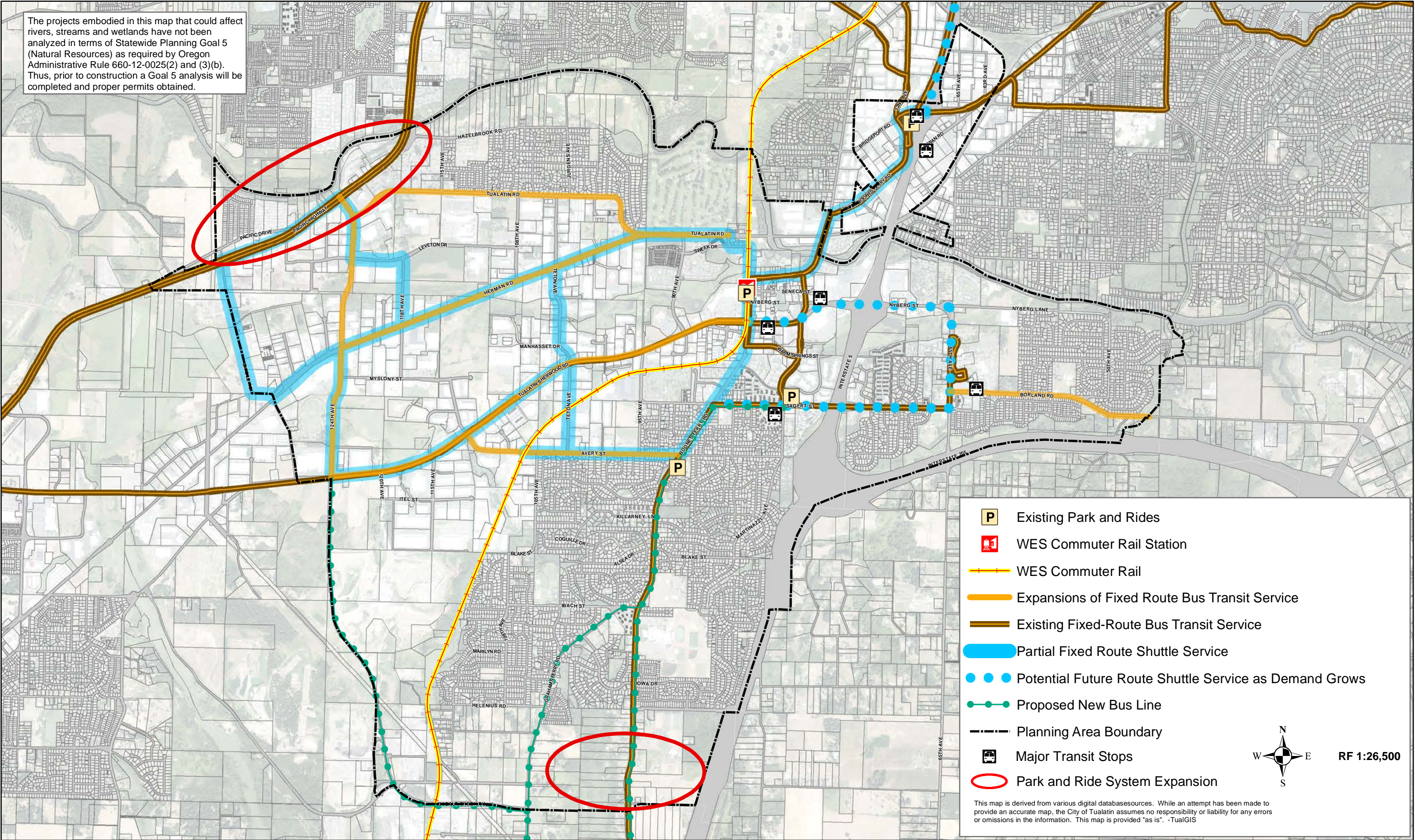
Data Resource Center/Metro

Map 8-4: Bicycle and Pedestrian Plan



Map 8-5: Tualatin Transit Plan

The projects embodied in this map that could affect rivers, streams and wetlands have not been analyzed in terms of Statewide Planning Goal 5 (Natural Resources) as required by Oregon Administrative Rule 660-12-0025(2) and (3)(b). Thus, prior to construction a Goal 5 analysis will be completed and proper permits obtained.



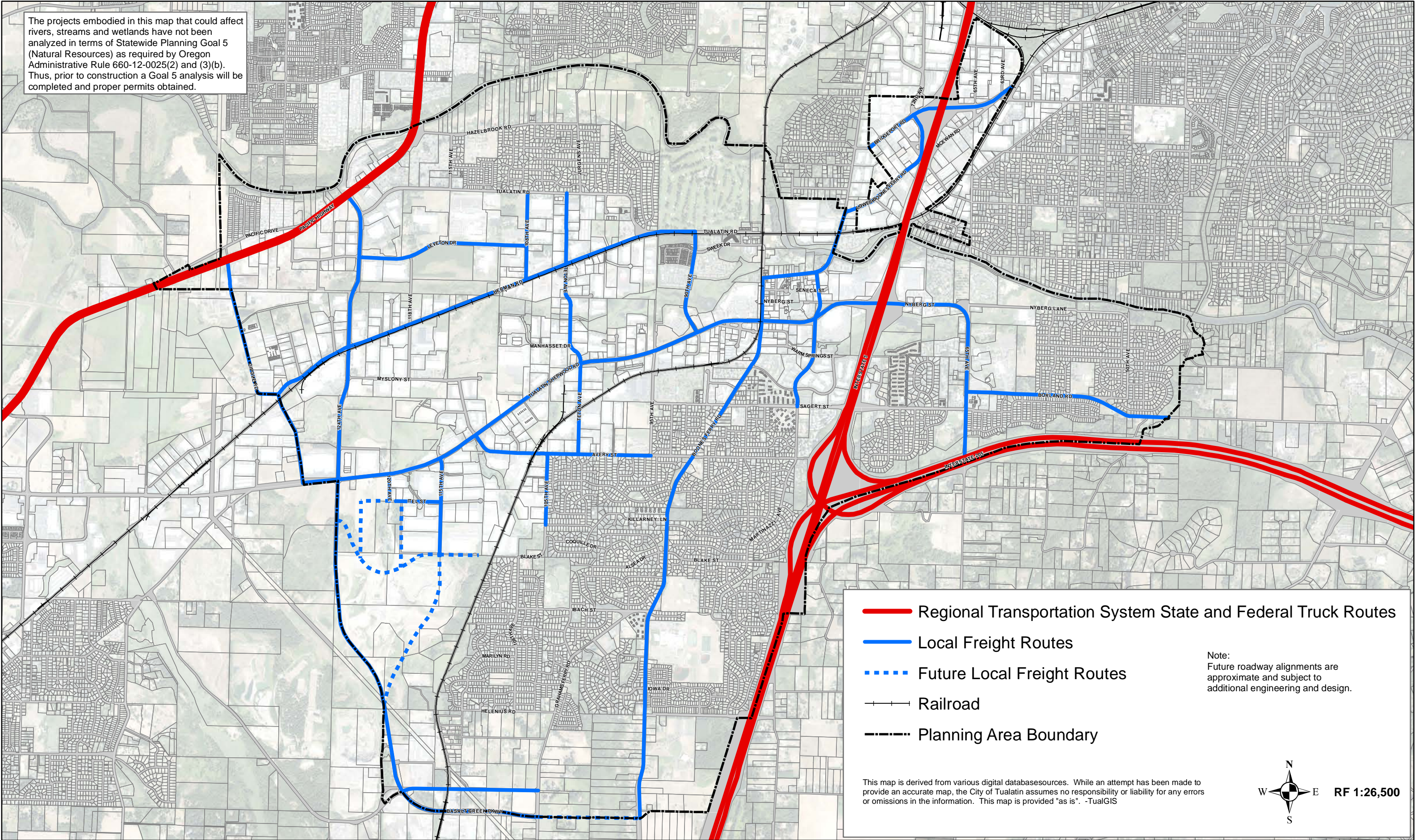
	Existing Park and Rides
	WES Commuter Rail Station
	WES Commuter Rail
	Expansions of Fixed Route Bus Transit Service
	Existing Fixed-Route Bus Transit Service
	Partial Fixed Route Shuttle Service
	Potential Future Route Shuttle Service as Demand Grows
	Proposed New Bus Line
	Planning Area Boundary
	Major Transit Stops
	Park and Ride System Expansion

RF 1:26,500

This map is derived from various digital databasesources. While an attempt has been made to provide an accurate map, the City of Tualatin assumes no responsibility or liability for any errors or omissions in the information. This map is provided "as is". -TualGIS

Map 8-6: Freight Routes

The projects embodied in this map that could affect rivers, streams and wetlands have not been analyzed in terms of Statewide Planning Goal 5 (Natural Resources) as required by Oregon Administrative Rule 660-12-0025(2) and (3)(b). Thus, prior to construction a Goal 5 analysis will be completed and proper permits obtained.

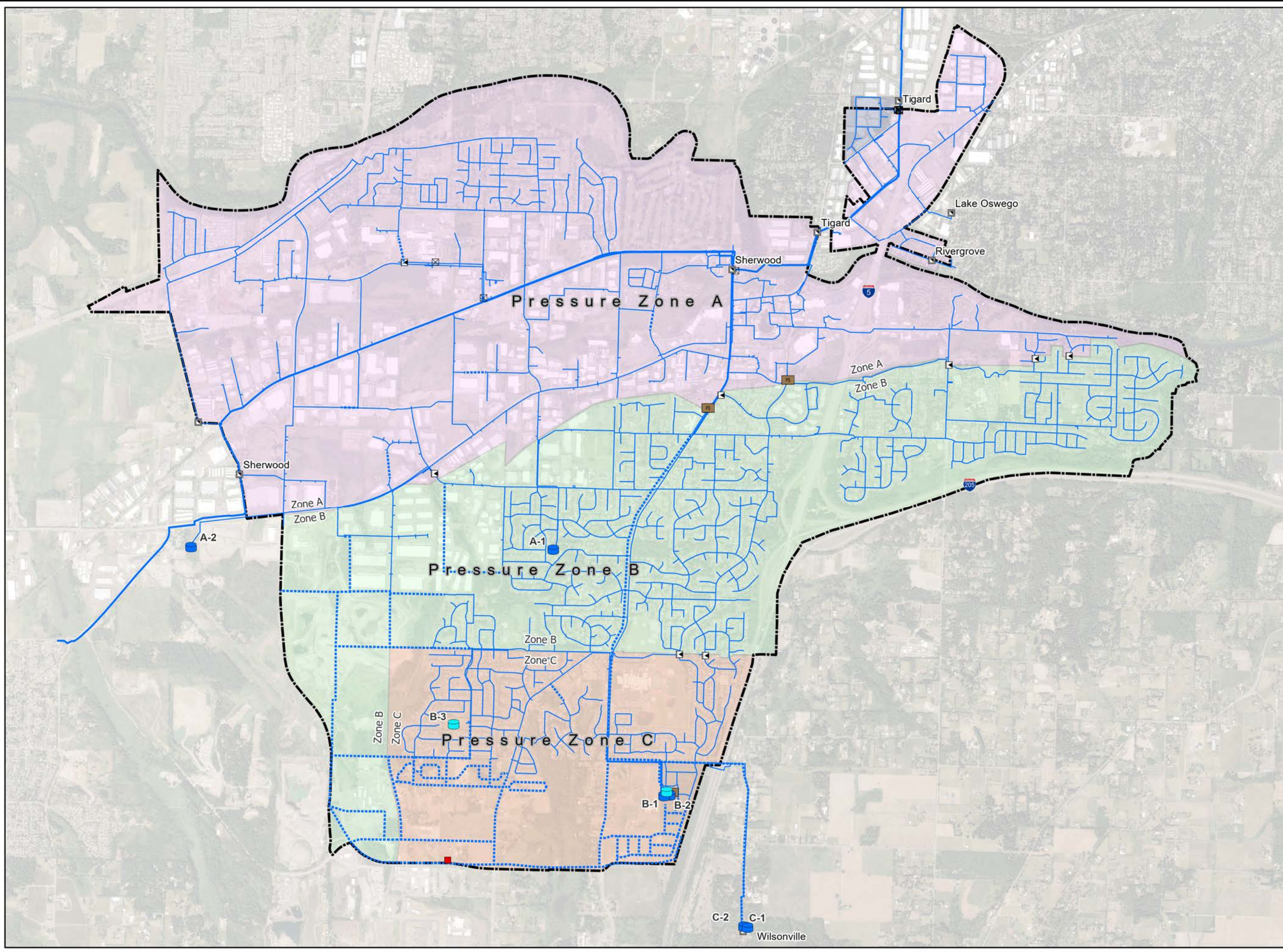
















- Regional Transportation System State and Federal Truck Routes
- Local Freight Routes
- - - Future Local Freight Routes
- Railroad
- Planning Area Boundary

Note:
Future roadway alignments are approximate and subject to additional engineering and design.

This map is derived from various digital databasesources. While an attempt has been made to provide an accurate map, the City of Tualatin assumes no responsibility or liability for any errors or omissions in the information. This map is provided "as is". -TualGIS












-  Pump Stations
-  Pressure Reducing-Sustaining Valve
-  Pressure Reducing Valve
-  Future Pressure Reducing Valve
-  Water System Interties
-  Existing Reservoirs
-  Future Reservoirs
-  Transmission Lines
-  Distribution System
-  Future System Improvements
-  A-Level
-  B-Level
-  C-Level
-  Bridgeport



RF 1:26,500

This map is derived from various digital database sources. While an attempt has been made to provide an accurate map, the City of Tualatin assumes no responsibility or liability for any errors or omissions in the information. This map is provided "as is". -TualGIS

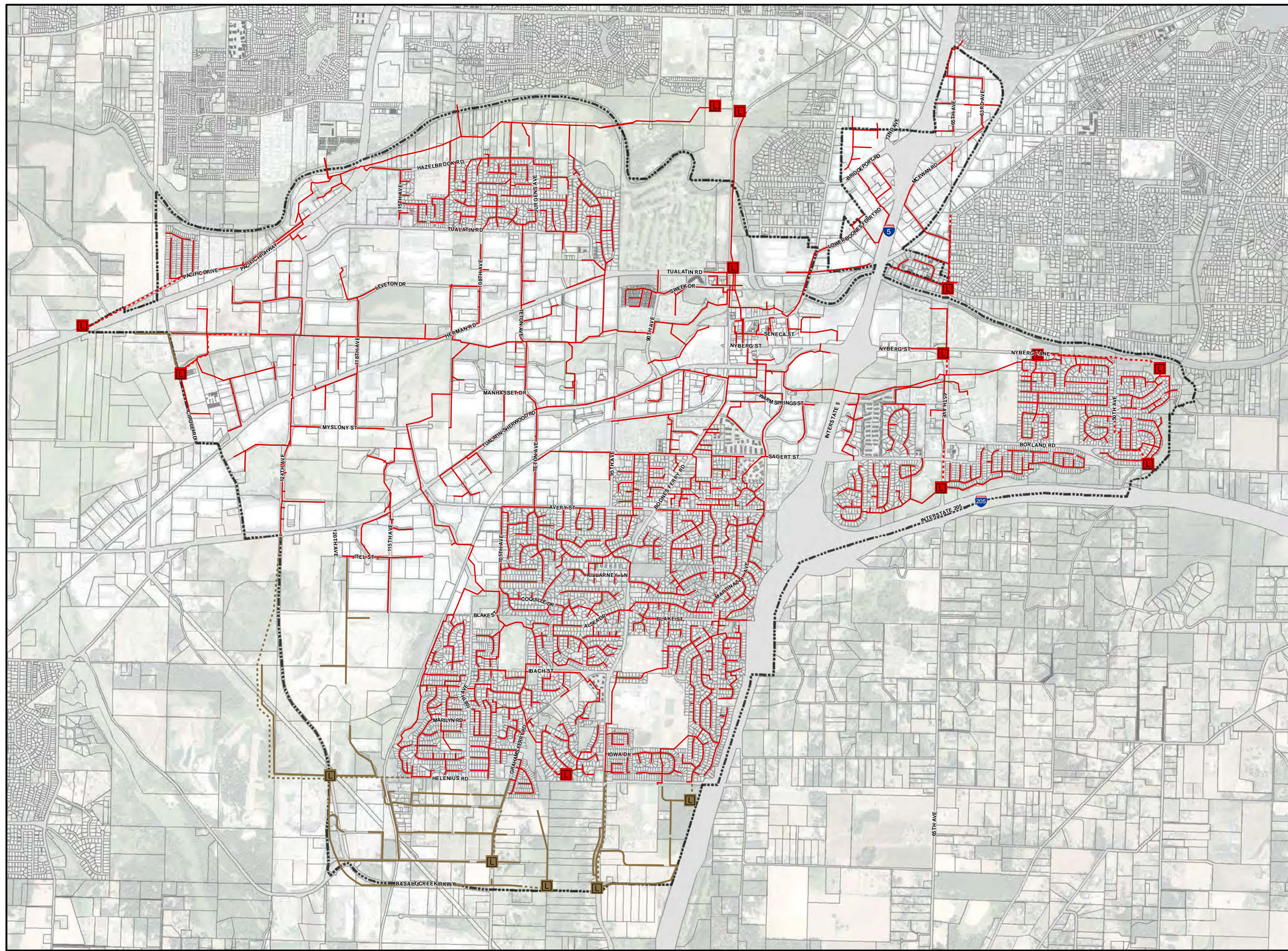
City of Tualatin
Sewer System Master Plan
Map 9-2

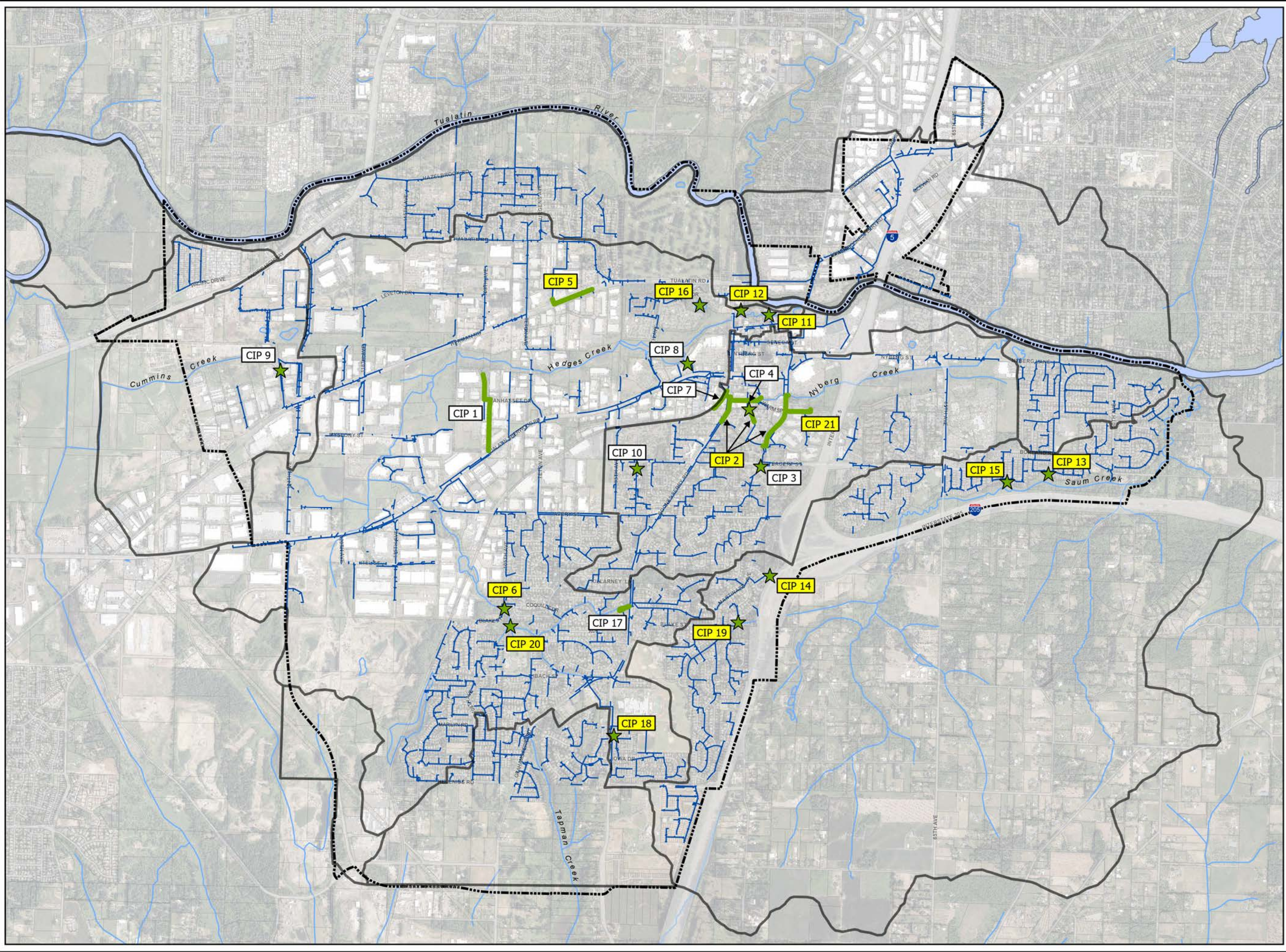
-  Conceptual Lift Station
-  Lift Station
-  Gravity Pipe
-  Force Main
-  Conceptual Gravity Pipe
-  Conceptual Force Main
-  Planning Area Boundary









RF 1:26,500

This map is derived from various digital database sources. While an attempt has been made to provide an accurate map, the City of Tualatin assumes no responsibility or liability for any errors or omissions in the information. This map is provided "as is". -TualGIS





-  CIP (Conveyance Pipe or Channel)
-  CIP (Other)
-  Storm Lines
-  Major Drainage Basins
-  Planning Area Boundary
-  Streams

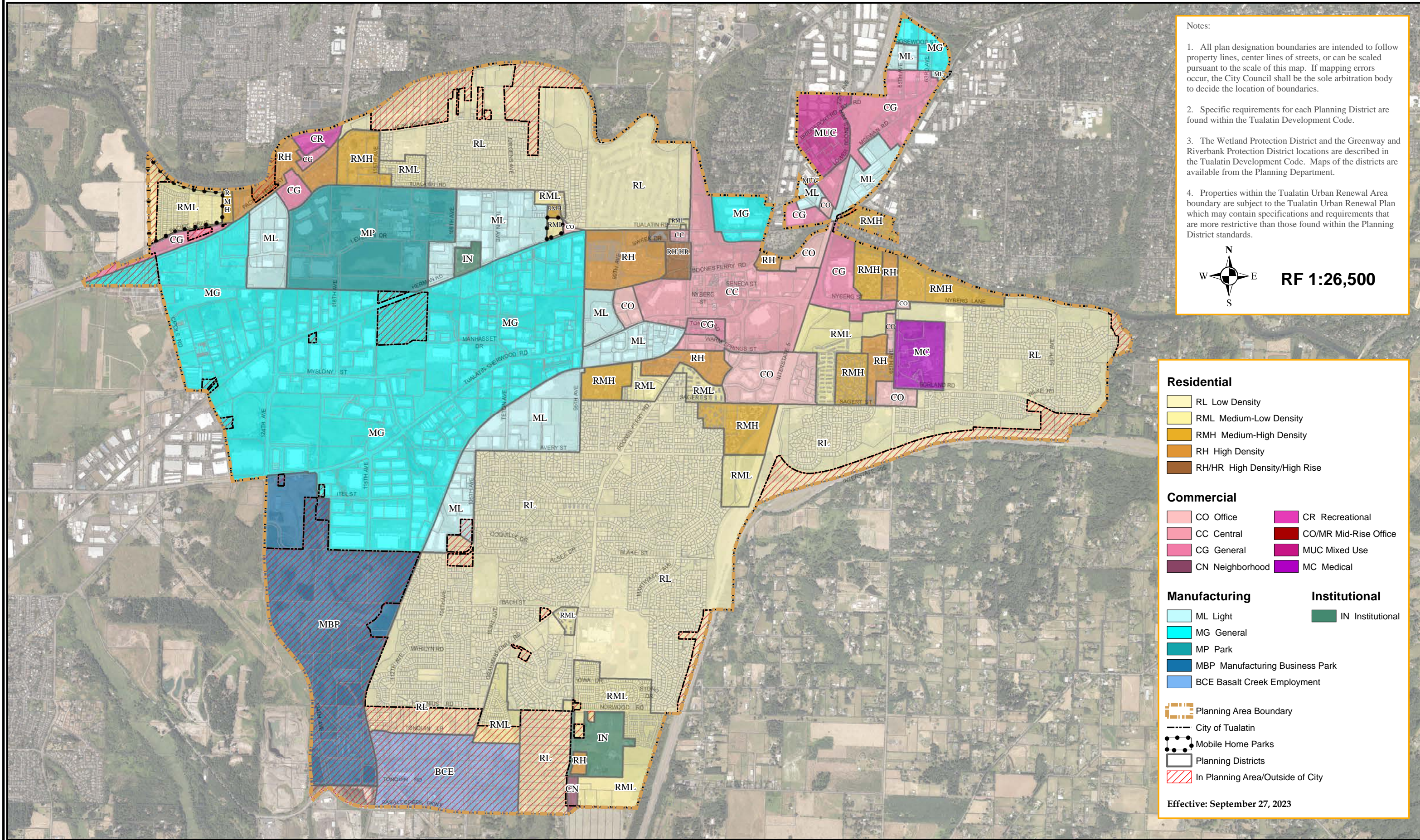


RF 1:26,500

Effective: September 11, 2024

This map is derived from various digital database sources. While an attempt has been made to provide an accurate map, the City of Tualatin assumes no responsibility or liability for any errors or omissions in the information. This map is provided "as is". -TualGIS

Map 10-1 Comprehensive Plan Map



- Notes:
1. All plan designation boundaries are intended to follow property lines, center lines of streets, or can be scaled pursuant to the scale of this map. If mapping errors occur, the City Council shall be the sole arbitration body to decide the location of boundaries.
 2. Specific requirements for each Planning District are found within the Tualatin Development Code.
 3. The Wetland Protection District and the Greenway and Riverbank Protection District locations are described in the Tualatin Development Code. Maps of the districts are available from the Planning Department.
 4. Properties within the Tualatin Urban Renewal Area boundary are subject to the Tualatin Urban Renewal Plan which may contain specifications and requirements that are more restrictive than those found within the Planning District standards.

RF 1:26,500

Residential

- RL Low Density
- RML Medium-Low Density
- RMH Medium-High Density
- RH High Density
- RH/HR High Density/High Rise

Commercial

- CO Office
- CC Central
- CG General
- CN Neighborhood
- CR Recreational
- CO/MR Mid-Rise Office
- MUC Mixed Use
- MC Medical

Manufacturing

- ML Light
- MG General
- MP Park
- MBP Manufacturing Business Park
- BCE Basalt Creek Employment

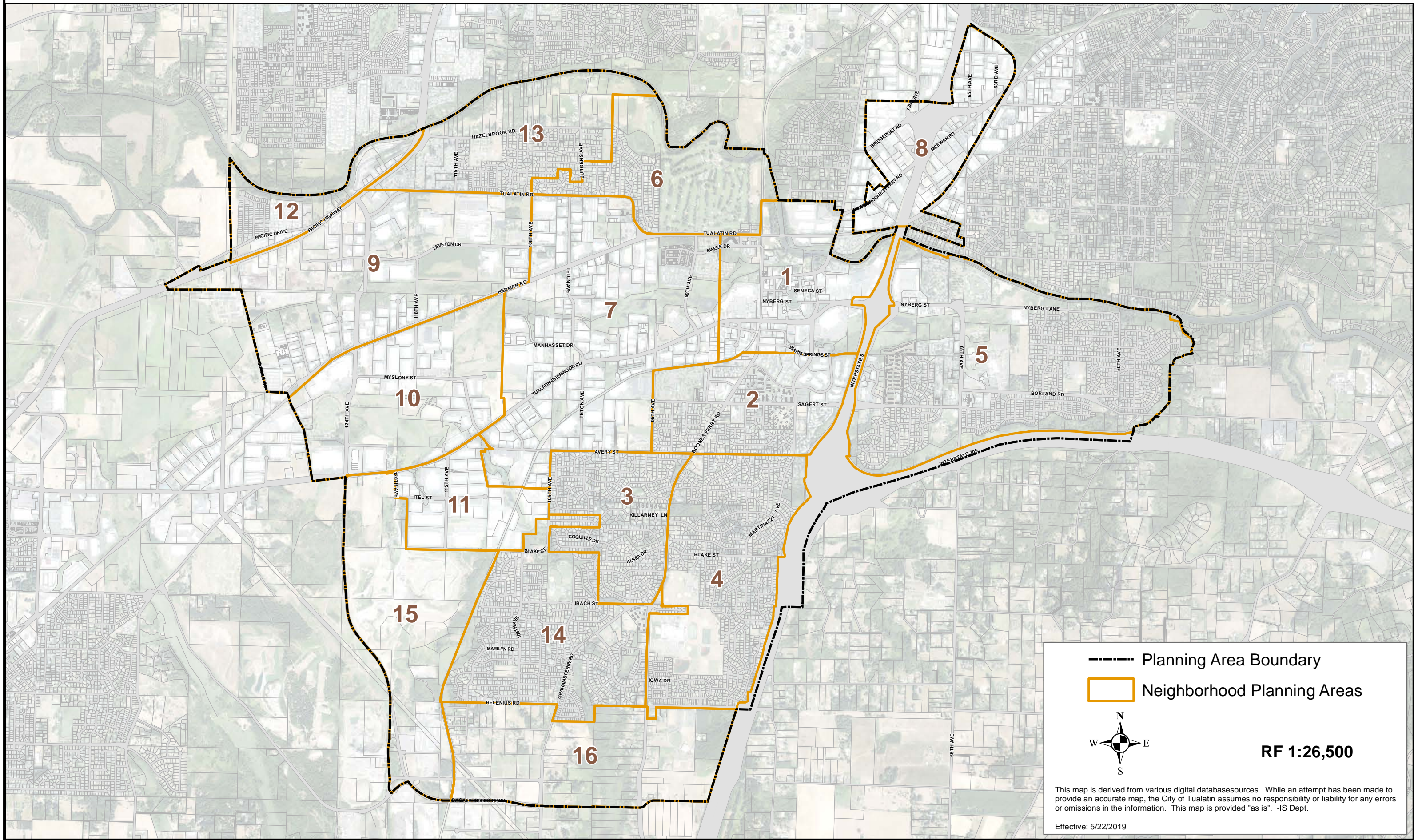
Institutional

- IN Institutional

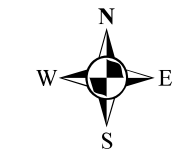
Planning Area Boundary
 City of Tualatin
 Mobile Home Parks
 Planning Districts
 In Planning Area/Outside of City

Effective: September 27, 2023

Map 10-2: Neighborhood Planning Areas



--- Planning Area Boundary
[Orange Outline] Neighborhood Planning Areas



RF 1:26,500

This map is derived from various digital databasesources. While an attempt has been made to provide an accurate map, the City of Tualatin assumes no responsibility or liability for any errors or omissions in the information. This map is provided "as is". -IS Dept.

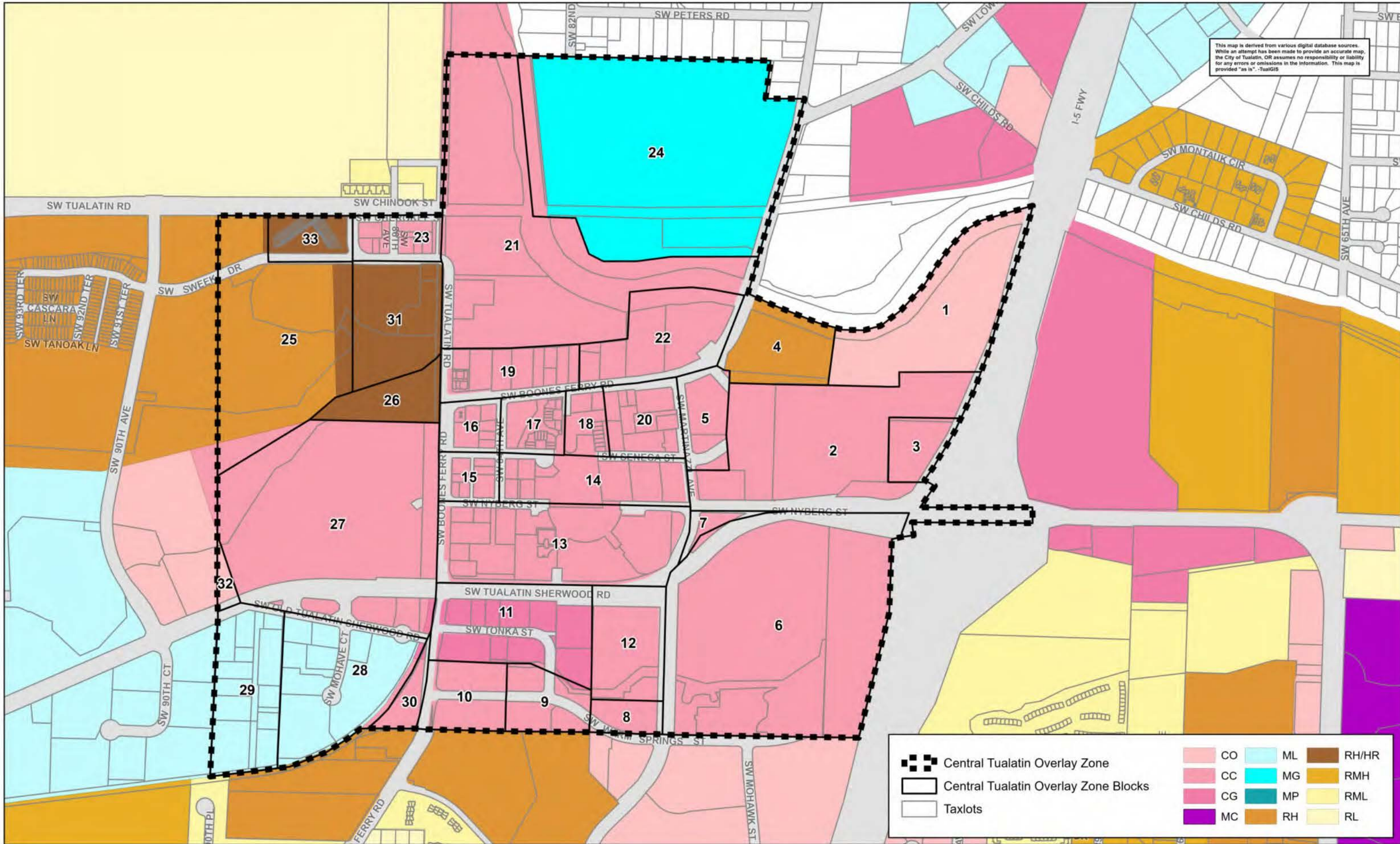
Effective: 5/22/2019

Map 10-3: Central Tualatin Overlay Zone

RF 1:6000

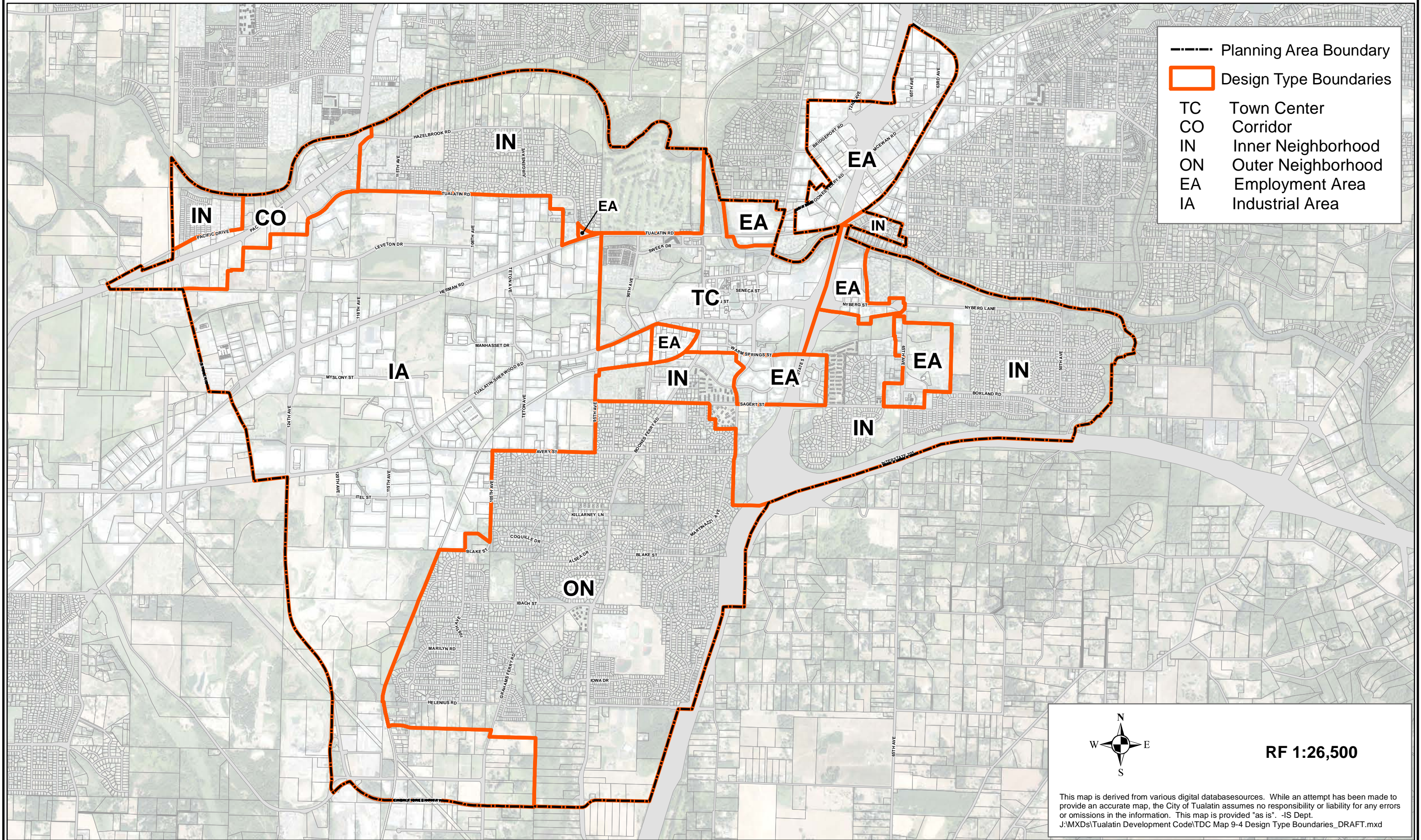


This map is derived from various digital database sources. While an attempt has been made to provide an accurate map, the City of Tualatin, OR assumes no responsibility or liability for any errors or omissions in the information. This map is provided "as is". -TualGIS



	Central Tualatin Overlay Zone		CO		ML		RH/HR
	Central Tualatin Overlay Zone Blocks		CC		MG		RMH
	Taxlots		CG		MP		RML
			MC		RH		RL

Map 10-4: Design Type Boundaries

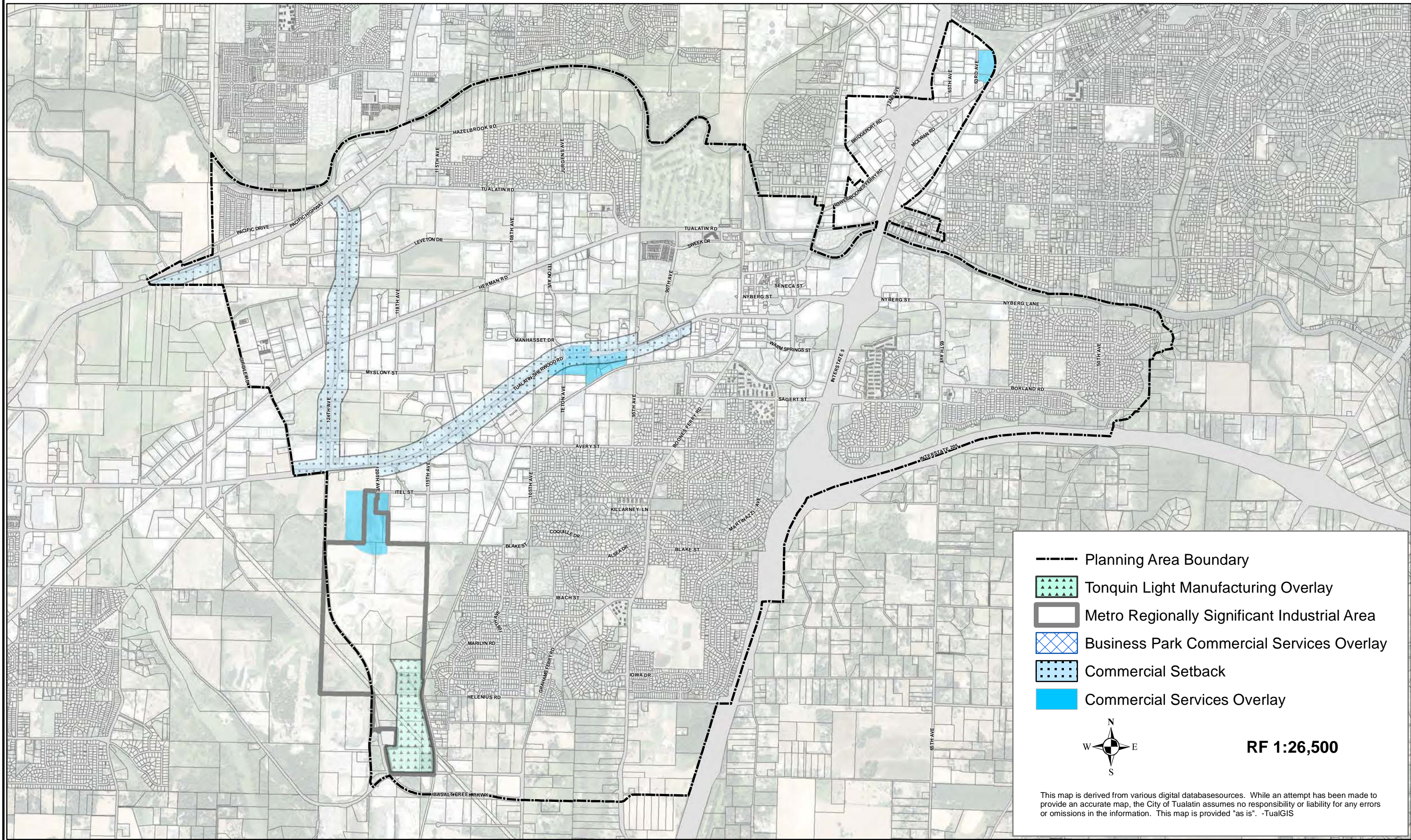


	Planning Area Boundary
	Design Type Boundaries
TC	Town Center
CO	Corridor
IN	Inner Neighborhood
ON	Outer Neighborhood
EA	Employment Area
IA	Industrial Area

RF 1:26,500

This map is derived from various digital databasesources. While an attempt has been made to provide an accurate map, the City of Tualatin assumes no responsibility or liability for any errors or omissions in the information. This map is provided "as is". -IS Dept.
J:\MXDs\Tualatin Development Code\TDC Map 9-4 Design Type Boundaries_DRAFT.mxd

Map 10-5: Commercial Setback & Commercial Services Overlay



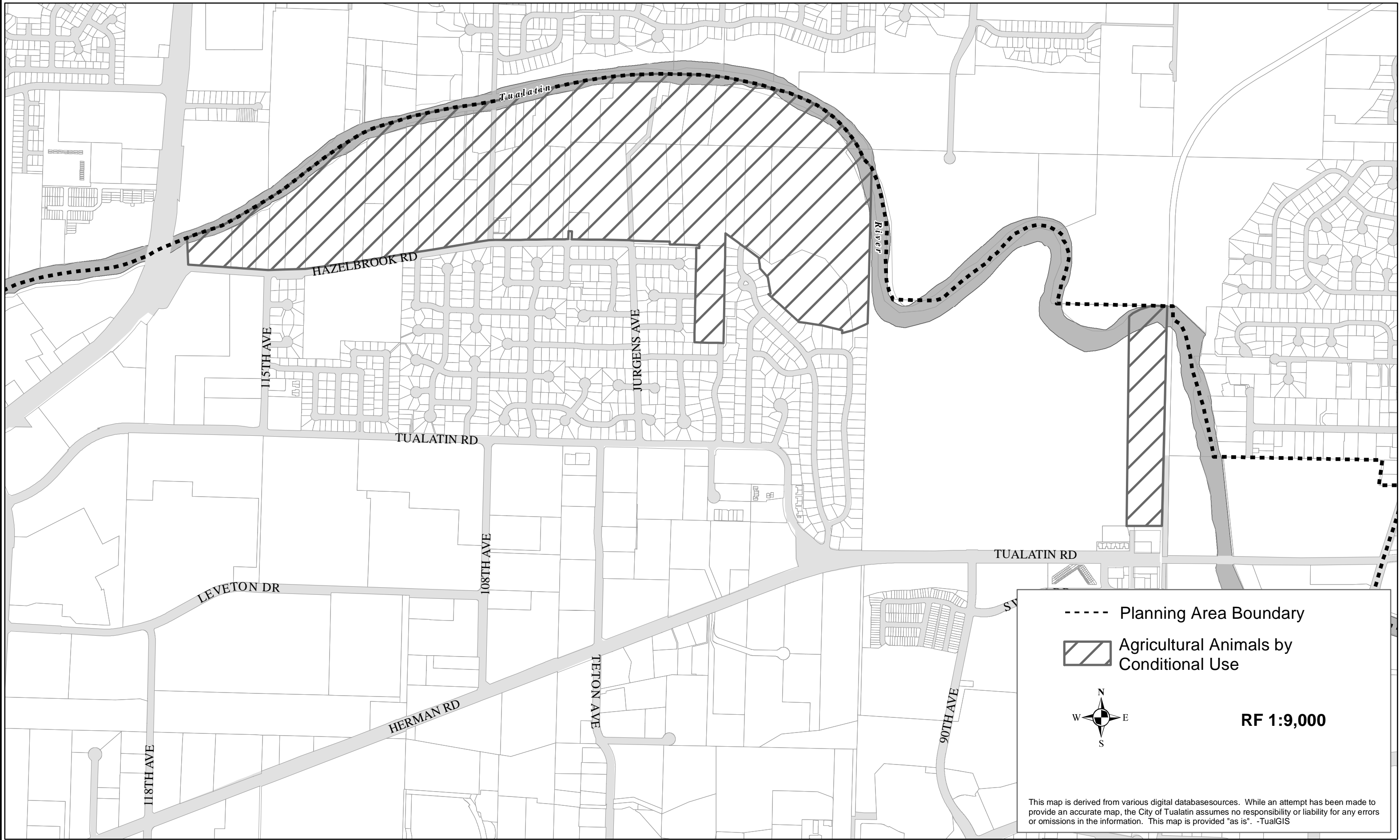
- Planning Area Boundary
- ▨ Tonquin Light Manufacturing Overlay
- ▭ Metro Regionally Significant Industrial Area
- ▨ Business Park Commercial Services Overlay
- ▨ Commercial Setback
- Commercial Services Overlay

N
W E
S

RF 1:26,500

This map is derived from various digital databasesources. While an attempt has been made to provide an accurate map, the City of Tualatin assumes no responsibility or liability for any errors or omissions in the information. This map is provided "as is". -TualGIS

Map 10-6: Conditional Use for Agricultural Animals



----- Planning Area Boundary

 Agricultural Animals by Conditional Use



RF 1:9,000

This map is derived from various digital databasesources. While an attempt has been made to provide an accurate map, the City of Tualatin assumes no responsibility or liability for any errors or omissions in the information. This map is provided "as is". -TualGIS